



# 2026 Annual Operating Plan

April 1, 2026 thru March 31, 2027



# Annual Operating Plan - Overview

- Water Authority AOP one of three for the Middle Rio Grande
- Operating period: April 1, 2026 to March 31, 2027
- Due to USFWS by May 15<sup>th</sup>
- Key inputs into the AOP:
  - SP-4830 Conditions 12 and 13
  - Reclamation forecast model
  - *Water 2120* demand projection
- Coordinated between Water Resources and Operations



# Precipitation and Temperature Outlook

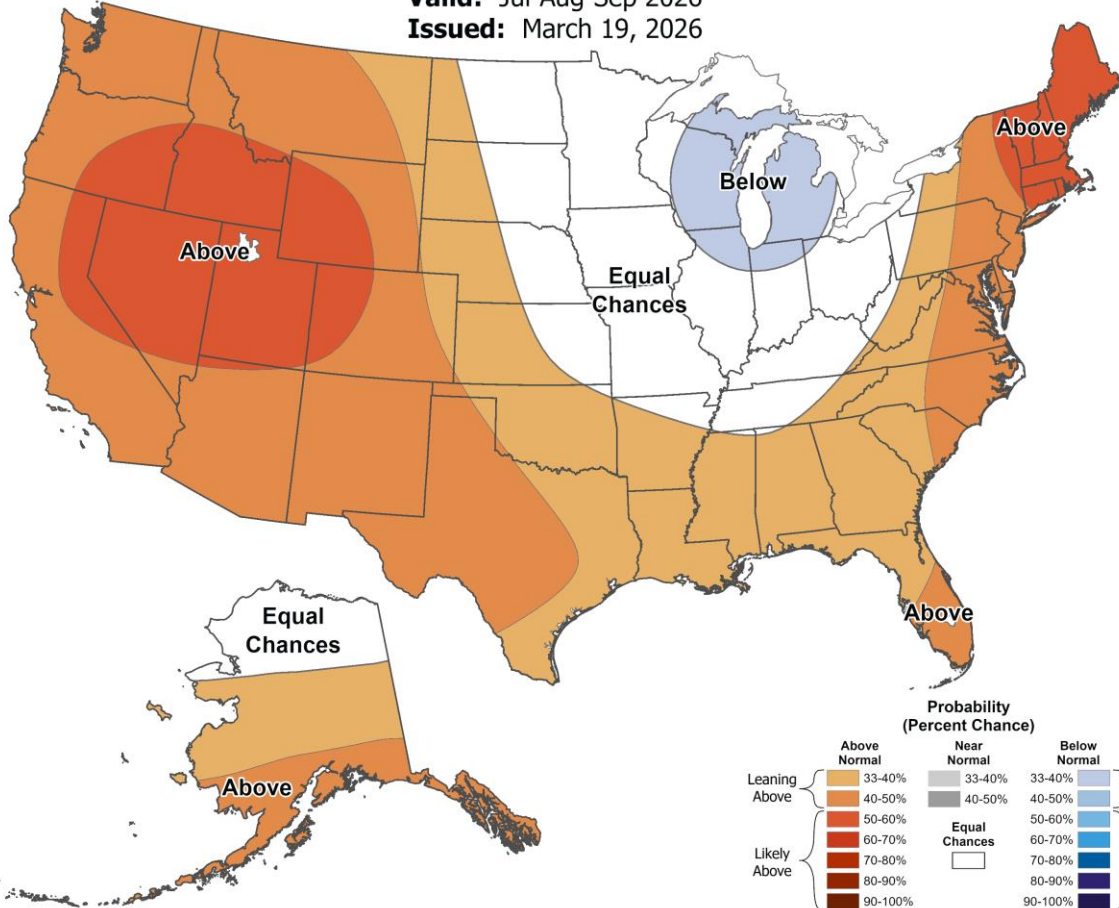
National Weather Service Climate :

[https://www.cpc.ncep.noaa.gov/products/predictions/long\\_range/seasonal.php?lead=4](https://www.cpc.ncep.noaa.gov/products/predictions/long_range/seasonal.php?lead=4) (Date accessed: March 20, 2026)



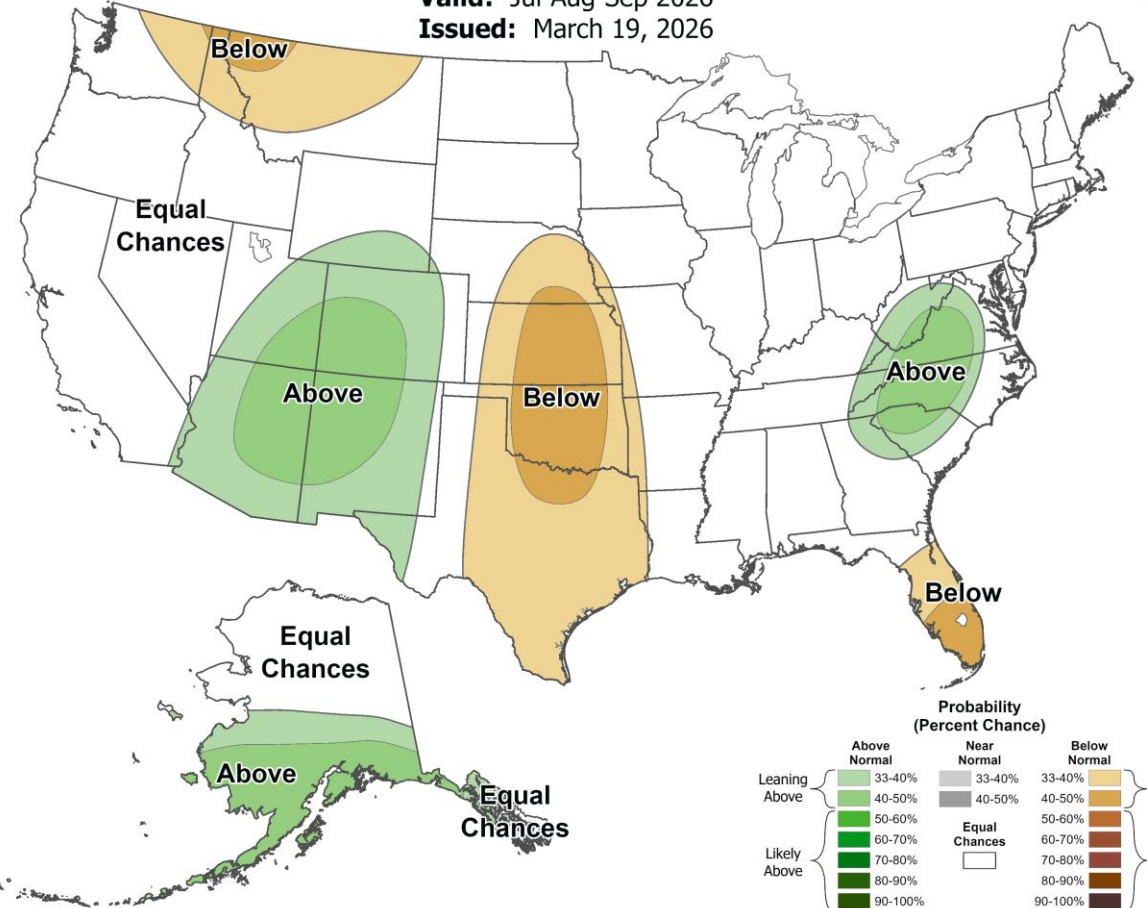
## Seasonal Temperature Outlook

Valid: Jul-Aug-Sep 2026  
Issued: March 19, 2026



## Seasonal Precipitation Outlook

Valid: Jul-Aug-Sep 2026  
Issued: March 19, 2026



# SP-4830 Conditions 12 and 13

- *Condition 12* → “native” flow must be available AND stream flows at Albuquerque Central gage must be  $> 122$  cfs
- *Condition 13* → diversion of “native” water must be curtailed when native flow is  $< 195$  cfs at Alameda gage

AND

Diversion must be suspended if native flow in the Rio Grande channel is  $\leq 130$  cfs at Alameda gage OR stream flows in the Rio Grande channel  $\leq 122$  cfs at the Albuquerque Central gage

- AOP has both conditions set as thresholds that must be met for operation of the DWP diversion



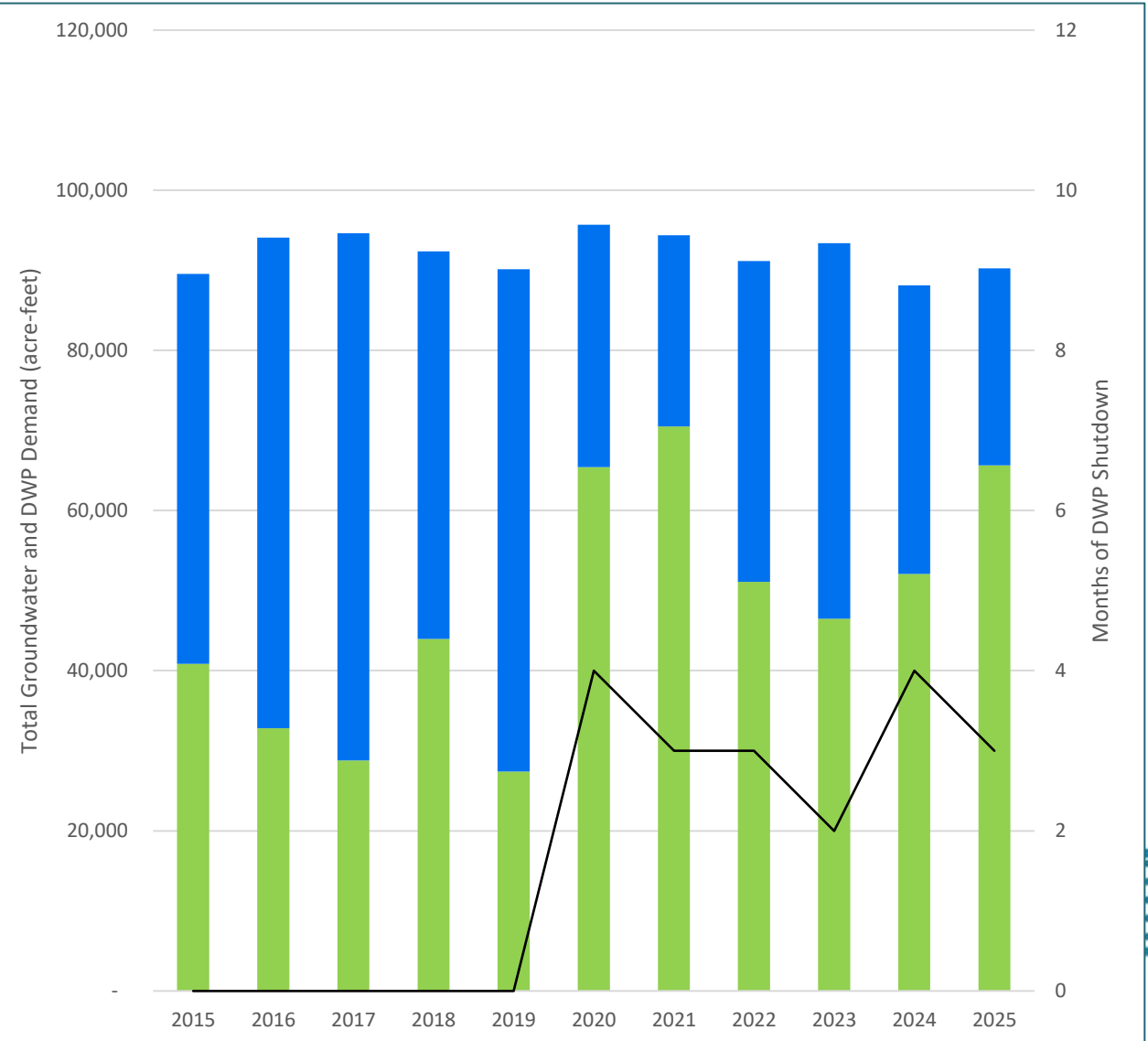
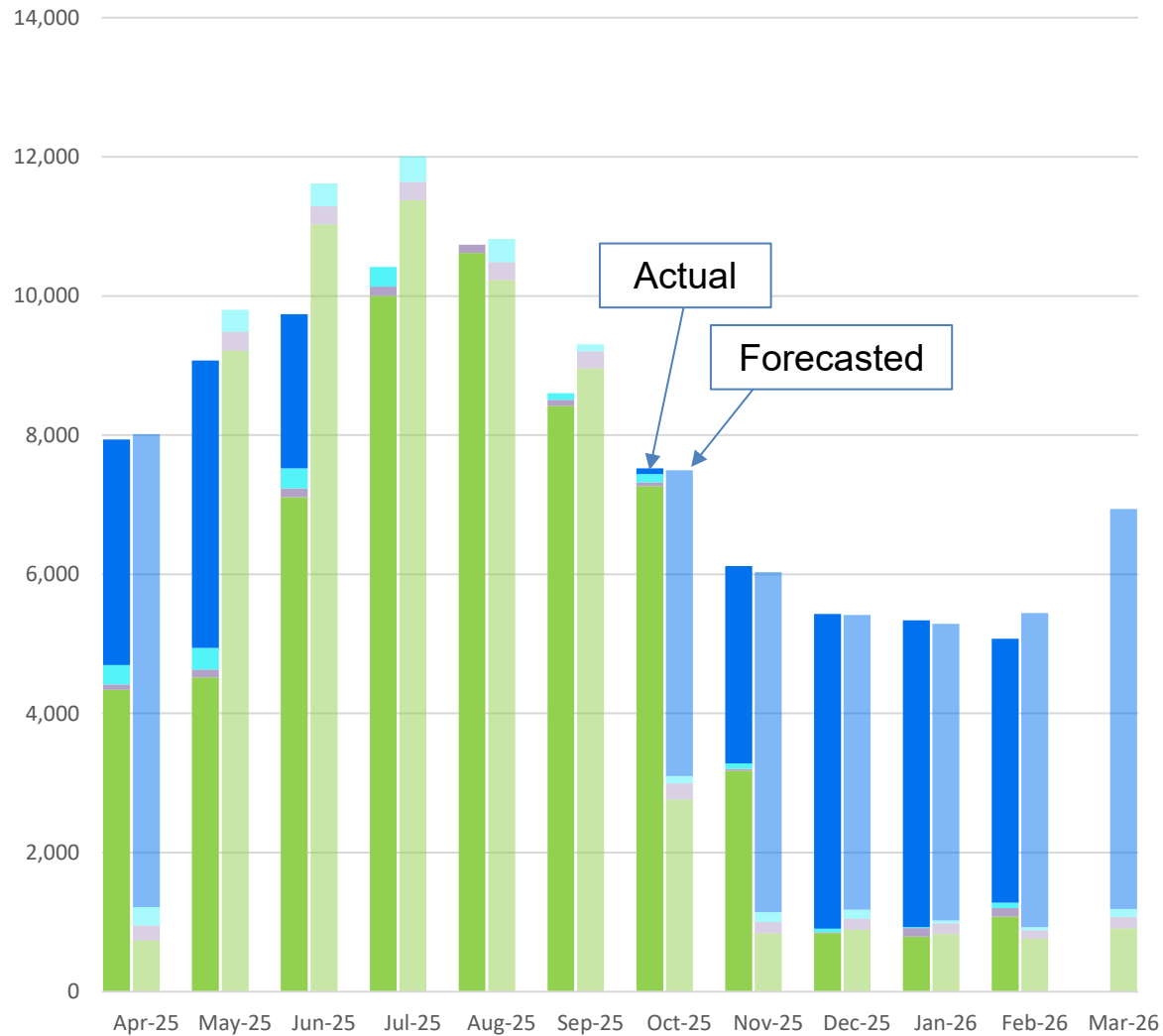
# Additional AOP Considerations

- Minimum groundwater pumping (in MGD)
- Reuse usage for operating period based on a three-year average
- North Non-Potable project demand (SP-4819)
- North Non-Potable surface water diversion shutdown during drying in Albuquerque reach
- DWTP Large-Scale Recharge Project – injected volume
- Bear Canyon Recharge Project – recharged volume

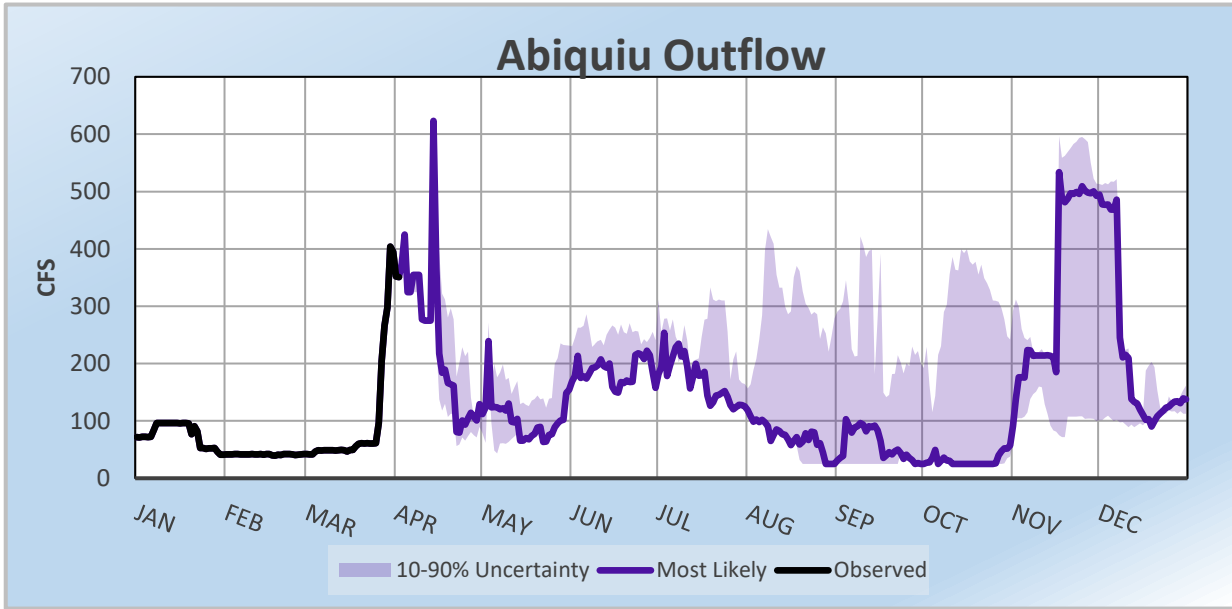


# Reflecting Back: 2025 AOP and Historic Groundwater Pumping

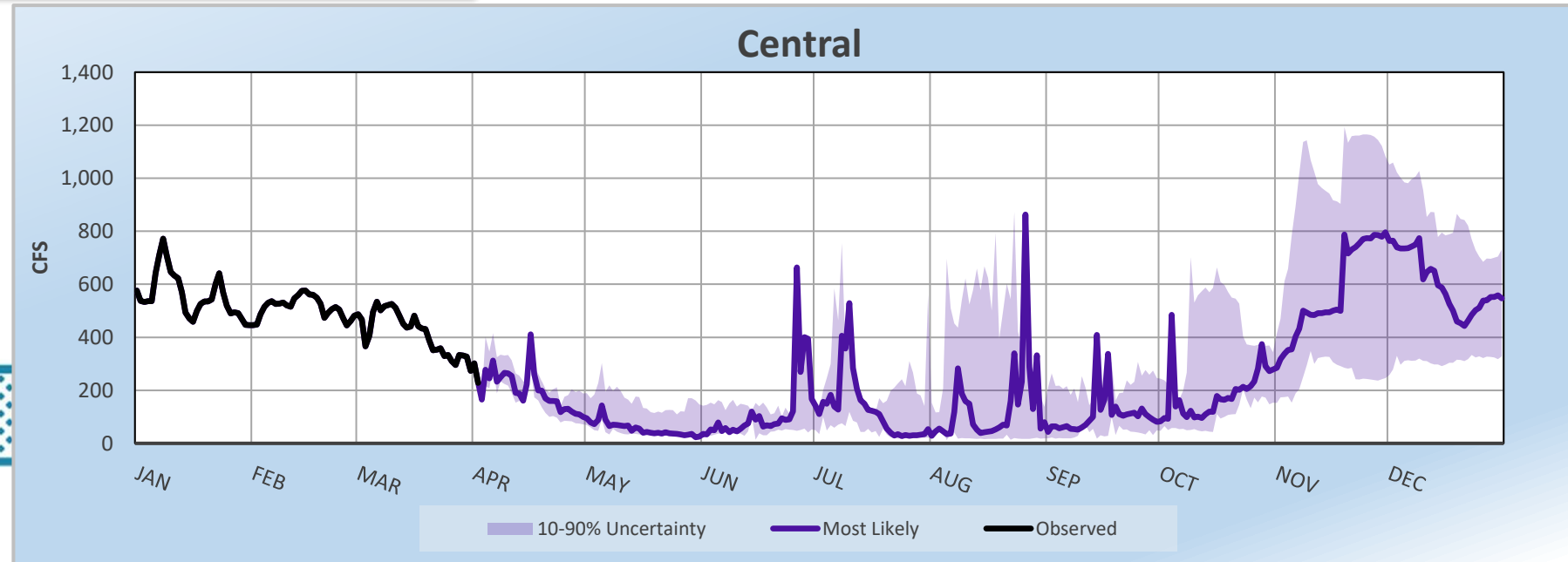
2025 AOP Supply Projections vs. Actual Supply Use



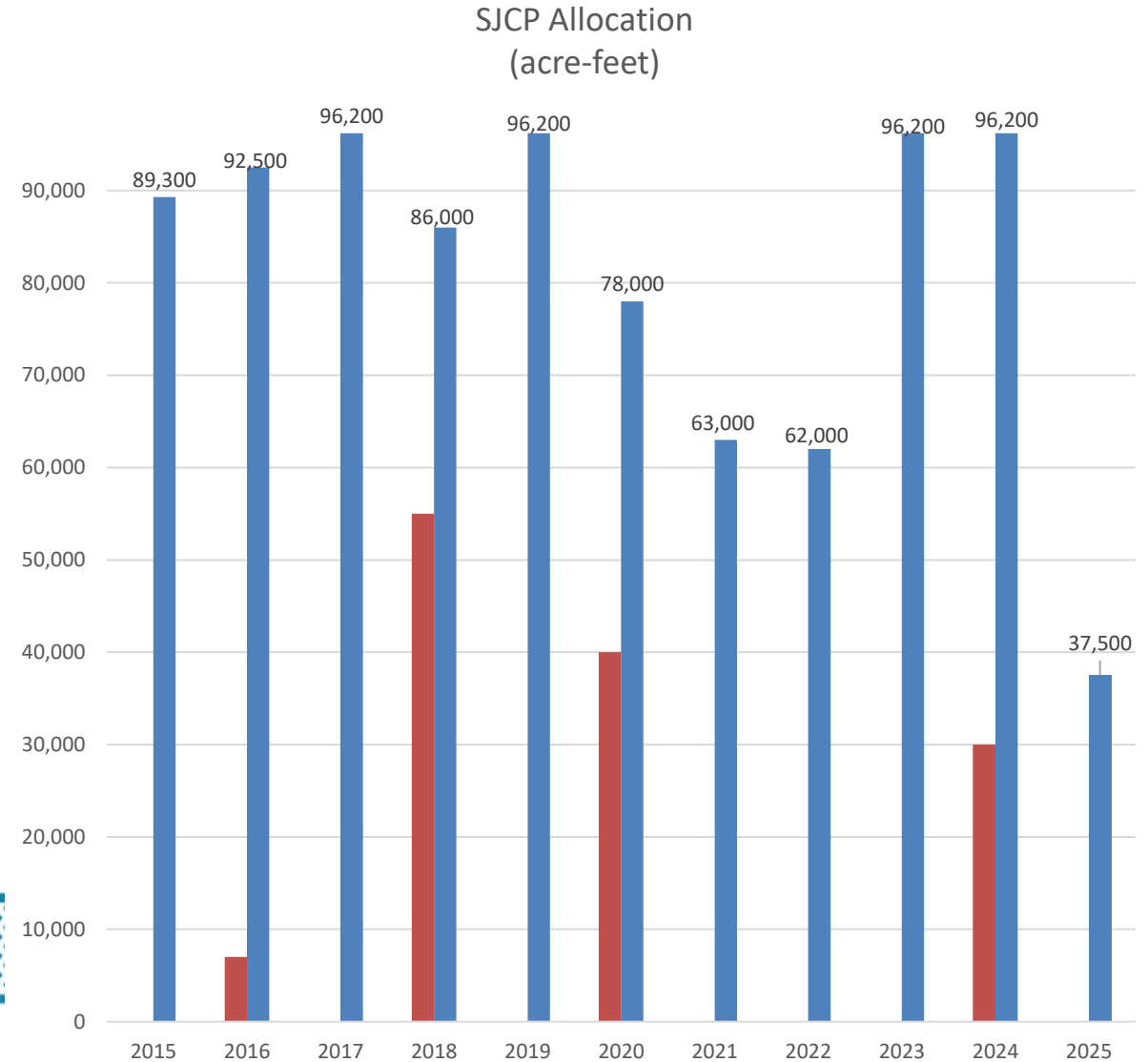
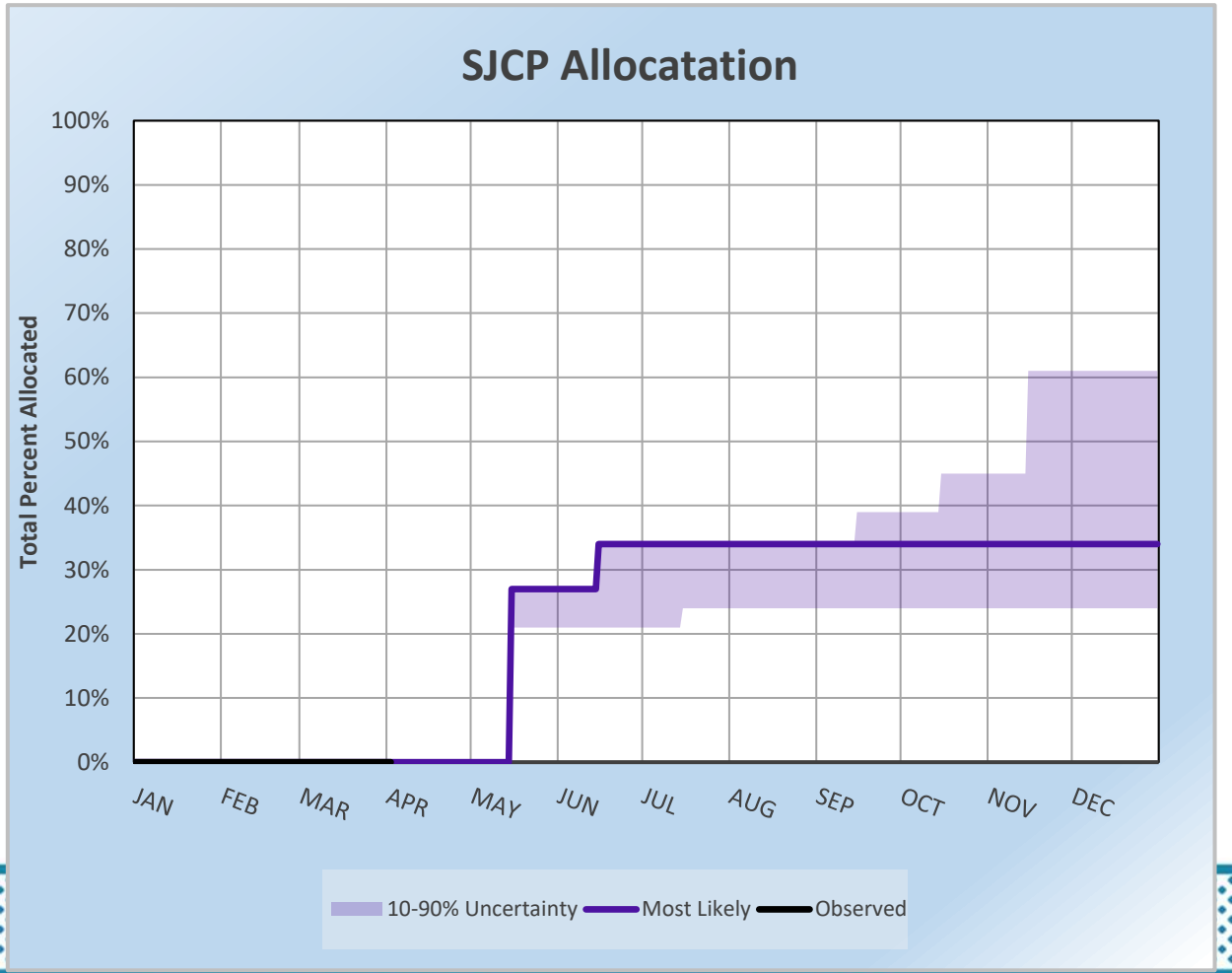
# Bureau of Reclamation 2026 Flow Forecast Results



- No flood operations anticipated
  - USACE flood operations threshold 1500 cfs
- Reclamation forecast assumes less active monsoon season
- Flows at Central go below 122 cfs at the end of April and remain low through mid-October
- Late-summer flows dependent on monsoons and MRGCD operations
- Albuquerque reach expected to dry

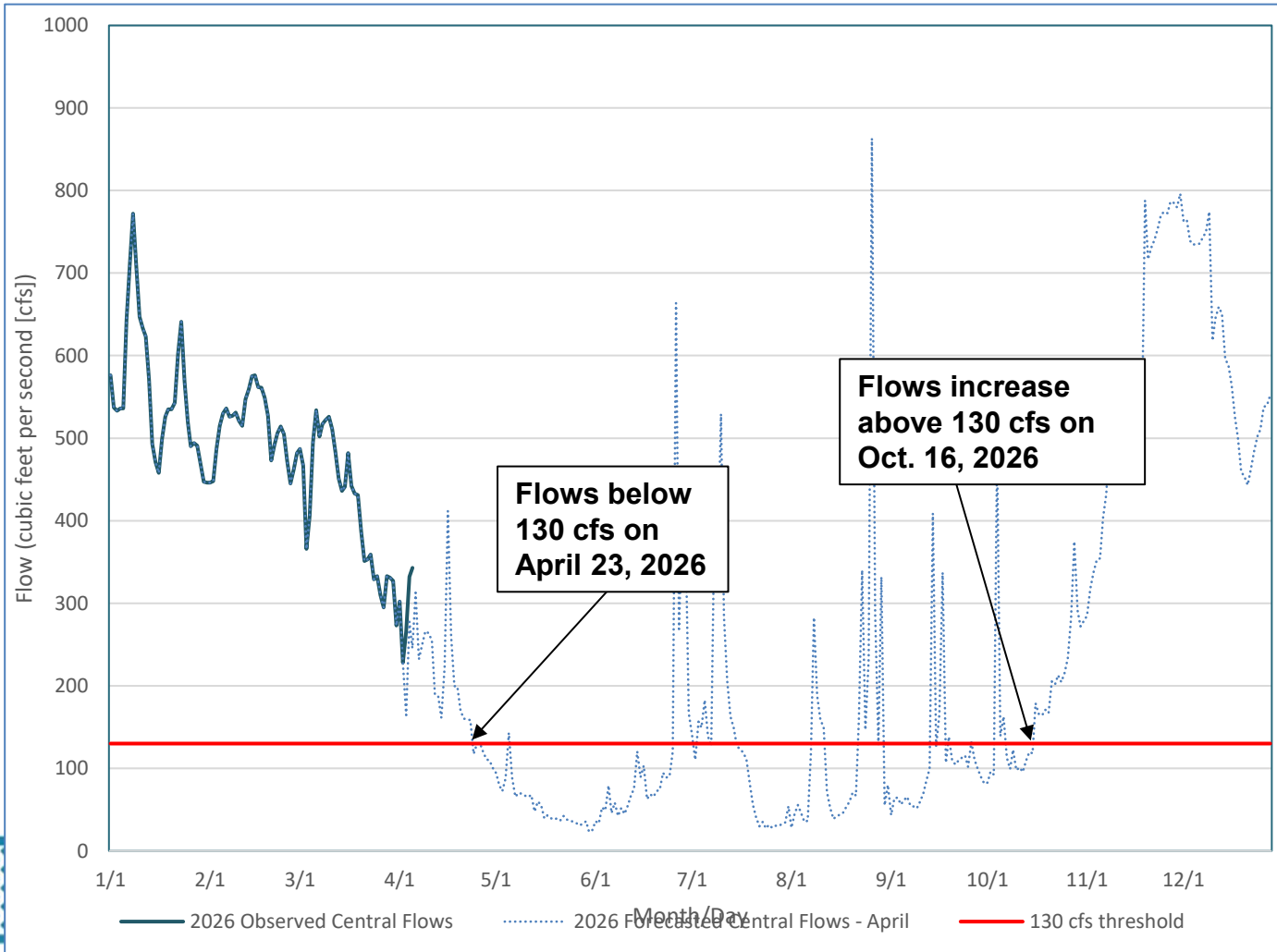


# San Juan-Chama Allocation Projection



# Water Authority Operations

April 1, 2026 – March 31, 2027

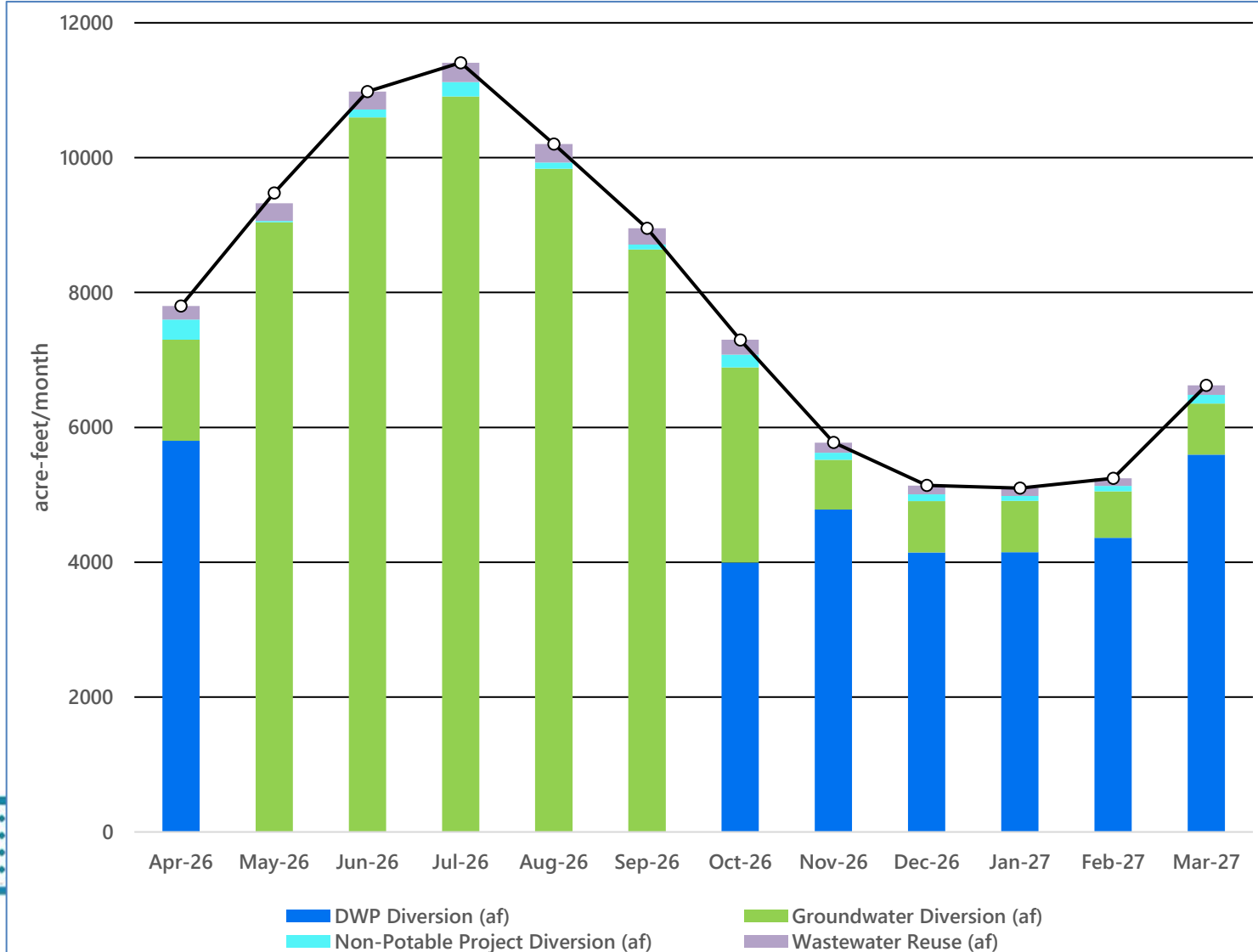


- No DWP diversions beginning in late-April through October 2026
- DWP will utilize shutdown to complete maintenance and CIP projects
- Actual operation will depend on observed flow conditions



# Water Authority Monthly Diversions

April 1, 2026 – March 31, 2027



Month	% Surface Water	% Groundwater
April 2026	80%	20%
May 2026	0.2%	99.8%
June 2026	1%	99%
July 2026	2%	98%
Aug 2026	1%	99%
Sept 2026	1%	99%
Oct 2026	59%	41%
Nov 2026	87%	13%
Dec 2026	85%	15%
Jan 2027	85%	15%
Feb 2027	87%	13%
March 2027	88%	12%

# WATER AUTHORITY CONSERVATION PROGRAM



STAGE 1

**PUBLIC  
EDUCATION**



STAGE 2

**INSTITUTIONAL  
PARTNERS**



STAGE 3

**DATA DRIVEN  
CONSERVATION**

# 2026 Conservation Actions

- 2026 webinars
- Bernalillo County non-functional turf pilot projects
- Connecting high water use parks to reuse system
- Increased outreach
- Continued data-driven conservation
- And, more!



**Albuquerque Bernalillo County Water Utility Authority**

DWNER, CURRENT  
3901 MARTIN RD SW  
ALBUQUERQUE, NM, 87105-6149

Date: 12/5/2025  
Site Address: 3901 MARTIN RD ALBUQUERQUE 87105-6149  
ACCR: 3055295599  
REF#: 143145

Dear Water Authority Customer:

The Water Authority Conservation team offers landscaping tips and advice to help keep plants healthy while watering more efficiently.

You were selected for this letter because you may have an overwatered landscape, mature trees, or, unfortunately, you may have a leak. The average usage for your home during the 2024 irrigation season (April 1, 2024 - October 31, 2024) is 143,157 gallons. The average use for all residential properties in your zip code is 48,289 gallons per year. We use this metric to identify customers that may need our assistance.

To conserve water, we offer rebates that can help you transform lawns into desert friendly xeriscapes, improve irrigation efficiency for planting new trees and keep mature trees healthy and rain barrels. To learn more, please visit our award winning yard and garden website [505outside.com](http://505outside.com) or reach out to [AskAnExpert@ABCWUA.org](mailto:AskAnExpert@ABCWUA.org)

**Watering Tips:**  
Drought conditions are the new norm and we all need to use our water wisely. We're providing the following tips to help you do that.

Want to see your current usage?  
Log into your account at [www.abcwua.org](http://www.abcwua.org) and scroll down to "View Water Usage".

Year	2024 (Gallons)	2023 (Gallons)
2024	143,157	48,289



# Regional Collaboration

---

- El Vado “First Fill” storage
- Ongoing coordination on Rio Chama channel capacity
- Coordination with USFWS to adjust egg monitoring to reduced flow conditions
- Continued partnership with City of Albuquerque Rio Grande Silvery Minnow refugium



# Questions?

