

Board Meeting CIP Project Update

February 2026



CIP Budget Summary (FY26)



CIP Budget At-A-Glance

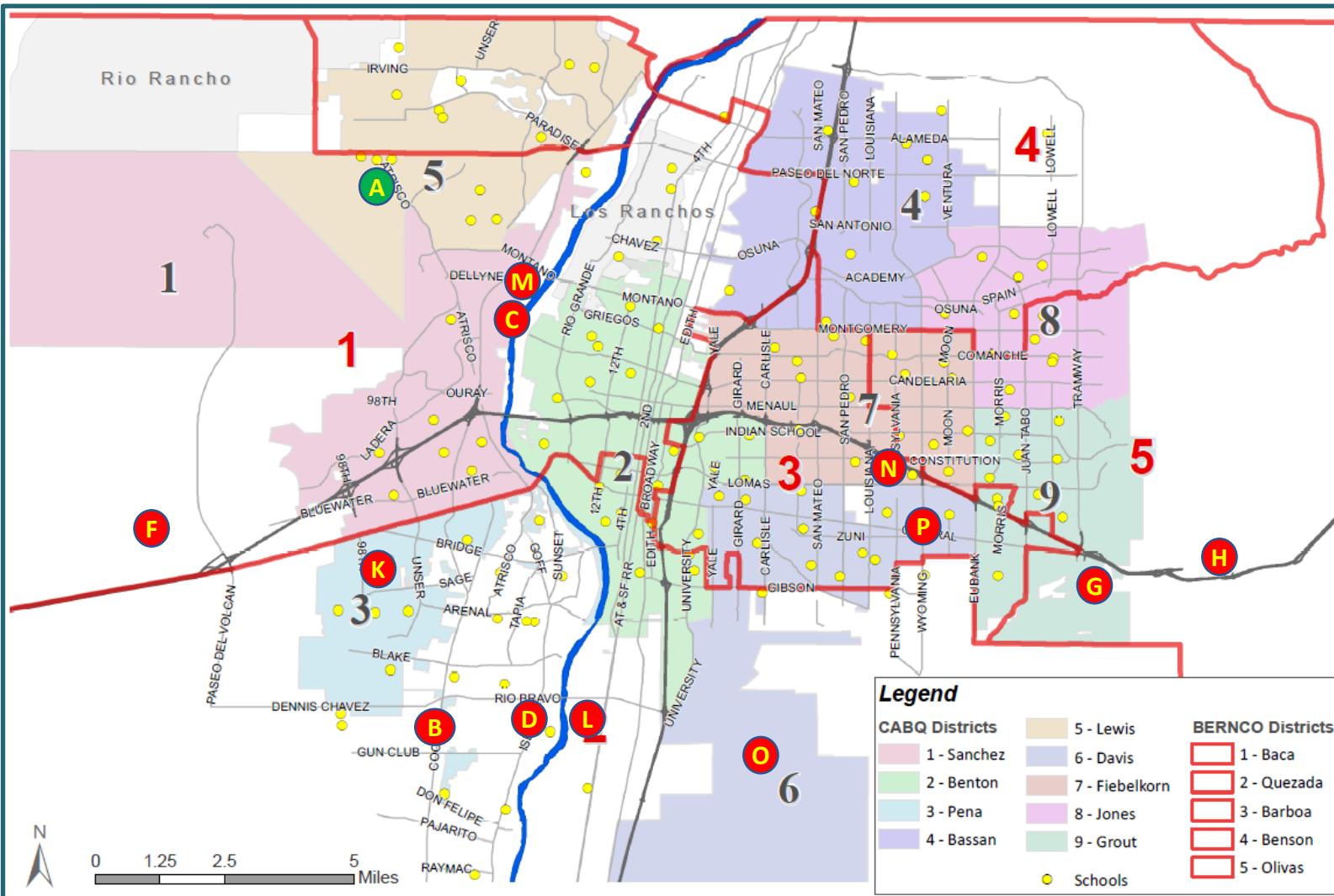
- FY26 – ~\$70M (\$160M), have \$65M encumbered as of Jan 2026, spent \$32M thru Jan. 2026

Areas of Focus/Need for Rehab per Decade Planning Process

- Interceptor Sewers – Isleta Blvd./Viola Ave./Griegos Rd. (completed in 2025), LS20 FM Repl. Ph. 1
- Reservoirs and Wells – Reservoir rehab, well replacement design/const., well/pump rehabs in FY26
- SWRP Facility – Primary Clarifiers, Digesters, Aeration Basins, and Electrical Upgrades ongoing in FY26
- SJCWTP Facility – SWS Ponds Dredging, Sulfuric Tanks, Polymer Tanks, GAC Filter exchange in FY26
- Westside/Bosque WRF plant – Design in FY25-FY26, construction by FY27/FY28



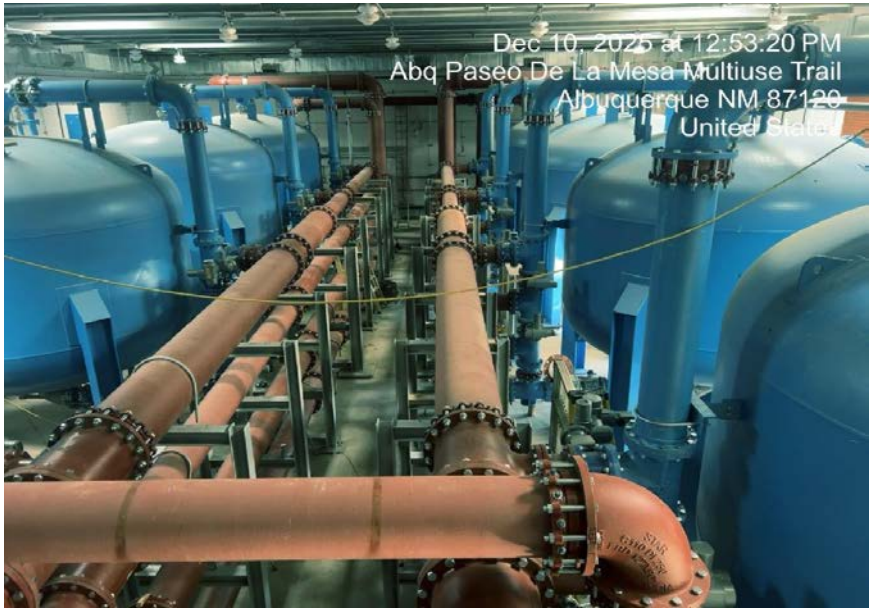
Priority Rehab Projects



- A** VOLCANO CLIFFS ATF & T-LINE – ARPA/WTB
Purpose: Add 17 MGD drinking water, remove T-Line bottleneck
Status: In Construction – complete by July 2026
- B** SEWER REHAB (Coors/Rio Bravo - EMERGENCY)
Purpose: Rehab collapsed 54" sewer interceptor pipe
Status: Construction ongoing
- C** LS 24 FORCE MAIN PLUG VALVE REPLACEMENT
Purpose: Replace failed FM PVs to enable isolation of dual FMs
Status: Construction in progress – complete by June 2026
- D** SEWER FORCE MAIN REHAB (LS20 on Isleta Blvd)
Purpose: Replace ~1 mile of broken 30" DIP Forcemain pipe
Status: In construction– completion by Aug 2026
- E** TO'HAIJILEE TRANSMISSION LINE – ARPA/WTB
Purpose: Install 8" WL to To'Hajiilee for Water Supply
Status: In Construction – complete by June 2026
- F** 8E TRANSMISSION LINE
Purpose: Install 2nd source of supply to Escondido Reservoir
Status: In Design
- G** CARNUEL WATER & SEWER PROJECTS - ARPA
Purpose: Potable system extension & SAS Phase 1 in Carnuel
Status: WL complete, SAS Ph. 1 complete by early 2026
- H** WEST MESA RESERVOIR REHAB - EMERGENCY
Purpose: Rehab leaking reservoir before Apr. 2026
Status: In Construction – complete by April 2026
- I** SWRP O&M & WAREHOUSE BUILDINGS
Purpose: New facilities to replace existing aged facility bldgs.
Status: In design – bidding by Dec 2026
- J** BOSQUE/WESTSIDE REUSE PROJECT- ARPA
Purpose: Expand reuse to Westside via new reclamation plant
Status: In Design
- K** WINROCK REUSE LINE EXTENSION
Purpose: Extend South Reuse system to new irrigation customers
Status: In construction – complete by early 2026
- L** MDS REUSE PUMP STATION - ARPA
Purpose: Deliver Reuse Water to MDS & County Recreation Complex
Status: In Design; Ph. 1 Package for Bid in April 2026
- M** CENTRAL/SIMMS STEEL WL REPLACEMENT
Purpose: Replace ~2 miles of steel WL
Status: In construction, complete by Dec 2026



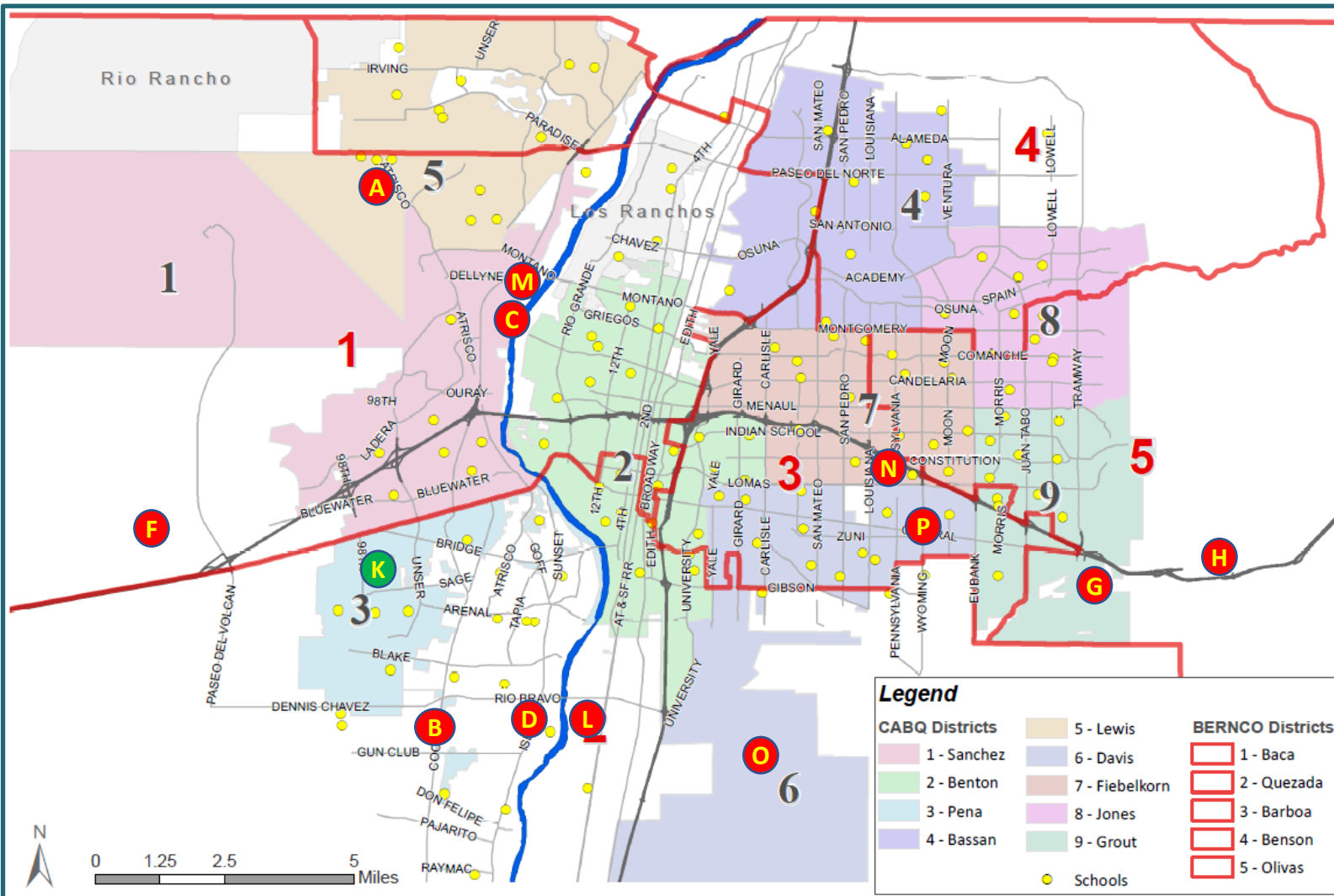
Project Highlight Photos: Volcano Cliffs Arsenic Treatment Facility



Dec 10, 2025 at 12:53:20 PM
Abq Paseo De La Mesa Multiuse Trail
Albuquerque NM 87120
United States



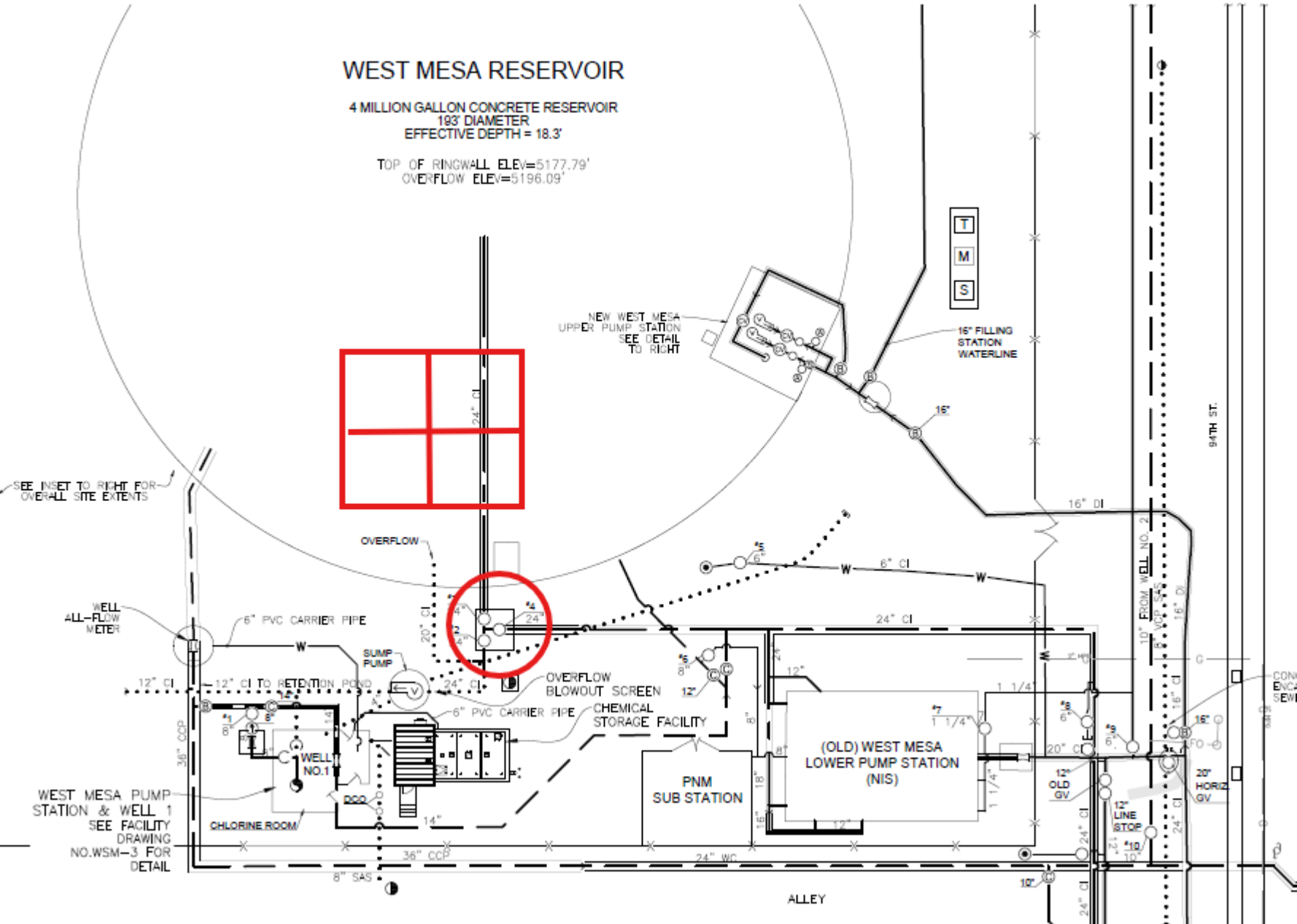
Priority Rehab Projects



- A VOLCANO CLIFFS ATF & T-LINE – ARPA/WTB**
Purpose: Add 17 MGD drinking water, remove T-Line bottleneck
Status: In Construction – complete by July 2026
- B SEWER REHAB (Coors/Rio Bravo - EMERGENCY)**
Purpose: Rehab collapsed 54" sewer interceptor pipe
Status: Construction ongoing
- C LS 24 FORCE MAIN PLUG VALVE REPLACEMENT**
Purpose: Replace failed FM PVs to enable isolation of dual FMs
Status: Construction in progress – complete by June 2026
- D SEWER FORCE MAIN REHAB (LS20 on Isleta Blvd)**
Purpose: Replace ~1 mile of broken 30" DIP Forcemain pipe
Status: In construction– completion by Aug 2026
- E TO'HAIJILEE TRANSMISSION LINE – ARPA/WTB**
Purpose: Install 8" WL to To'Hajiilee for Water Supply
Status: In Construction – complete by June 2026
- F 8E TRANSMISSION LINE**
Purpose: Install 2nd source of supply to Escondido Reservoir
Status: In Design
- G CARNUEL WATER & SEWER PROJECTS - ARPA**
Purpose: Potable system extension & SAS Phase 1 in Carnuel
Status: WL complete, SAS Ph. 1 complete by early 2026
- H WEST MESA RESERVOIR REHAB - EMERGENCY**
Purpose: Rehab leaking reservoir before Apr. 2026
Status: In Construction – complete by April 2026
- I SWRP O&M & WAREHOUSE BUILDINGS**
Purpose: New facilities to replace existing aged facility bldgs.
Status: In design – bidding by Dec 2026
- J BOSQUE/WESTSIDE REUSE PROJECT- ARPA**
Purpose: Expand reuse to Westside via new reclamation plant
Status: In Design
- K WINROCK REUSE LINE EXTENSION**
Purpose: Extend South Reuse system to new irrigation customers
Status: In construction – complete by early 2026
- L MDS REUSE PUMP STATION - ARPA**
Purpose: Deliver Reuse Water to MDS & County Recreation Complex
Status: In Design; Ph. 1 Package for Bid in April 2026
- M CENTRAL/SIMMS STEEL WL REPLACEMENT**
Purpose: Replace ~2 miles of steel WL
Status: In construction, complete by Dec 2026



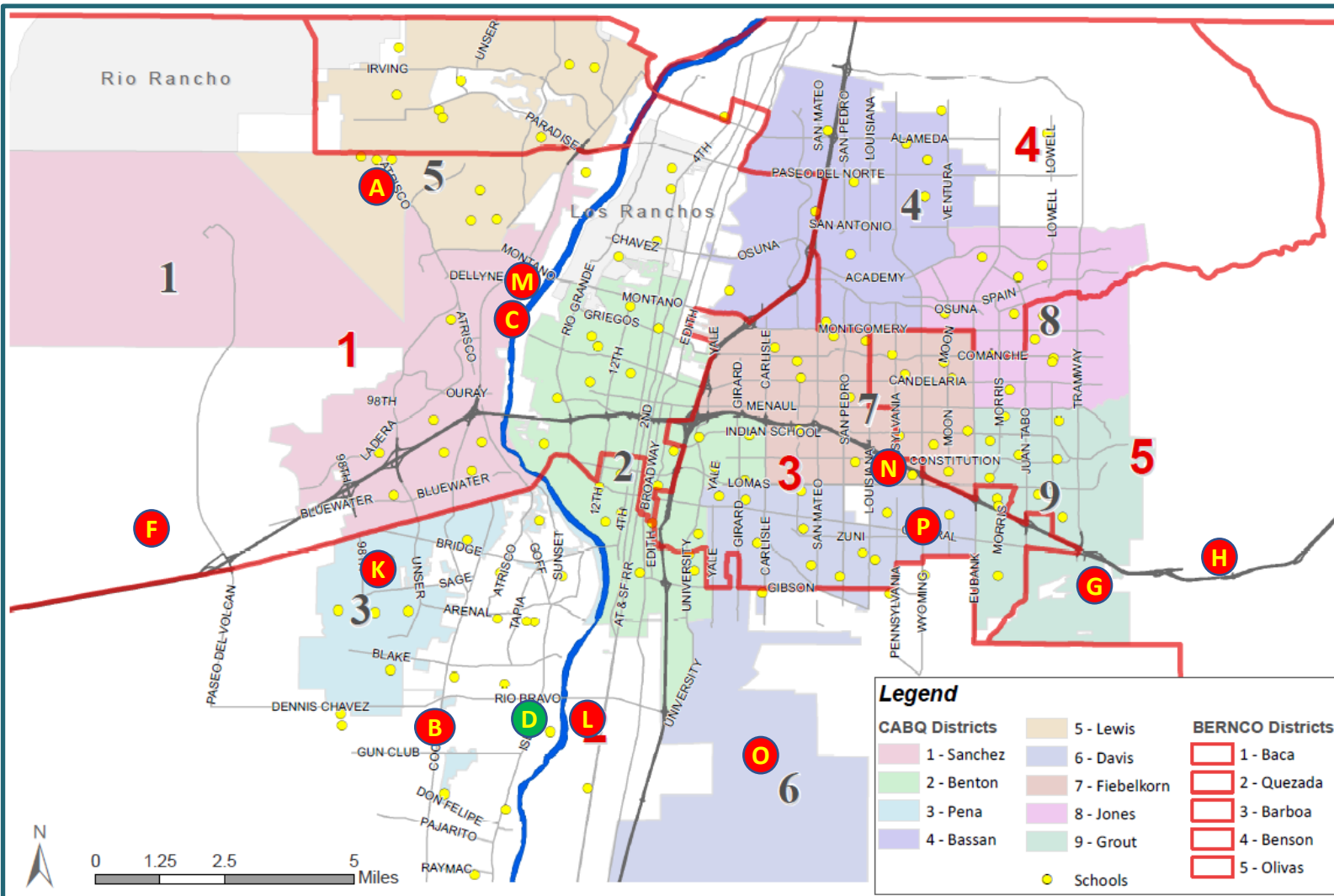
Project Highlight Photos: West Mesa Reservoir Rehab



Project Highlight Photos: West Mesa Reservoir Rehab



Priority Rehab Projects



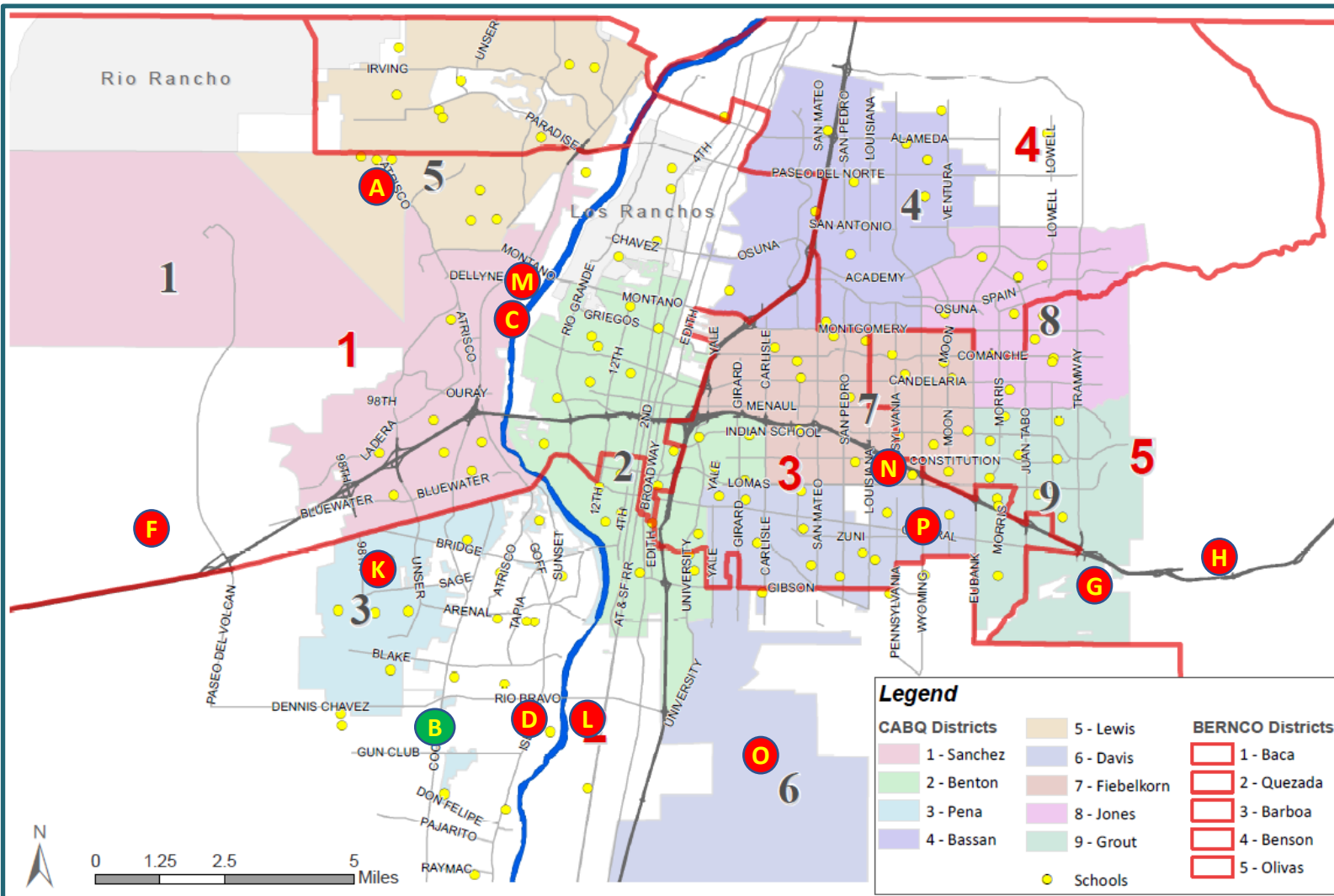
- A VOLCANO CLIFFS ATF & T-LINE – ARPA/WTB**
Purpose: Add 17 MGD drinking water, remove T-Line bottleneck
Status: In Construction – complete by July 2026
- B SEWER REHAB (Coors/Rio Bravo - EMERGENCY)**
Purpose: Rehab collapsed 54" sewer interceptor pipe
Status: Construction ongoing
- C LS 24 FORCE MAIN PLUG VALVE REPLACEMENT**
Purpose: Replace failed FM PVs to enable isolation of dual FMs
Status: Construction in progress – complete by June 2026
- D SEWER FORCE MAIN REHAB (LS20 on Isleta Blvd)**
Purpose: Replace ~1 mile of broken 30" DIP Forcemain pipe
Status: In construction– completion by Aug 2026
- E TO'HAIJILEE TRANSMISSION LINE – ARPA/WTB**
Purpose: Install 8" WL to To'Hajiilee for Water Supply
Status: In Construction – complete by June 2026
- F 8E TRANSMISSION LINE**
Purpose: Install 2nd source of supply to Escondido Reservoir
Status: In Design
- G CARNUEL WATER & SEWER PROJECTS - ARPA**
Purpose: Potable system extension & SAS Phase 1 in Carnuel
Status: WL complete, SAS Ph. 1 complete by early 2026
- H WEST MESA RESERVOIR REHAB - EMERGENCY**
Purpose: Rehab leaking reservoir before Apr. 2026
Status: In Construction – complete by April 2026
- I SWRP O&M & WAREHOUSE BUILDINGS**
Purpose: New facilities to replace existing aged facility bldgs.
Status: In design – bidding by Dec 2026
- J BOSQUE/WESTSIDE REUSE PROJECT- ARPA**
Purpose: Expand reuse to Westside via new reclamation plant
Status: In Design
- K WINROCK REUSE LINE EXTENSION**
Purpose: Extend South Reuse system to new irrigation customers
Status: In construction – complete by early 2026
- L MDS REUSE PUMP STATION - ARPA**
Purpose: Deliver Reuse Water to MDS & County Recreation Complex
Status: In Design; Ph. 1 Package for Bid in April 2026
- M CENTRAL/SIMMS STEEL WL REPLACEMENT**
Purpose: Replace ~2 miles of steel WL
Status: In construction, complete by Dec 2026



Project Highlight Photos: Lift Station 20 FM Replacement Ph. 1



Priority Rehab Projects



- A** VOLCANO CLIFFS ATF & T-LINE – ARPA/WTB
Purpose: Add 17 MGD drinking water, remove T-Line bottleneck
Status: In Construction – complete by July 2026
- B** SEWER REHAB (Coors/Rio Bravo - EMERGENCY)
Purpose: Rehab collapsed 54" sewer interceptor pipe
Status: Construction ongoing
- C** LS 24 FORCE MAIN PLUG VALVE REPLACEMENT
Purpose: Replace failed FM PVs to enable isolation of dual FMs
Status: Construction in progress – complete by June 2026
- D** SEWER FORCE MAIN REHAB (LS20 on Isleta Blvd)
Purpose: Replace ~1 mile of broken 30" DIP Forcemain pipe
Status: In construction– completion by Aug 2026
- E** TO'HAIJILEE TRANSMISSION LINE – ARPA/WTB
Purpose: Install 8" WL to To'Hajiilee for Water Supply
Status: In Construction – complete by June 2026
- F** 8E TRANSMISSION LINE
Purpose: Install 2nd source of supply to Escondido Reservoir
Status: In Design
- G** CARNUEL WATER & SEWER PROJECTS - ARPA
Purpose: Potable system extension & SAS Phase 1 in Carnuel
Status: WL complete, SAS Ph. 1 complete by early 2026
- H** WEST MESA RESERVOIR REHAB - EMERGENCY
Purpose: Rehab leaking reservoir before Apr. 2026
Status: In Construction – complete by April 2026
- I** SWRP O&M & WAREHOUSE BUILDINGS
Purpose: New facilities to replace existing aged facility bldgs.
Status: In design – bidding by Dec 2026
- J** BOSQUE/WESTSIDE REUSE PROJECT- ARPA
Purpose: Expand reuse to Westside via new reclamation plant
Status: In Design
- K** WINROCK REUSE LINE EXTENSION
Purpose: Extend South Reuse system to new irrigation customers
Status: In construction – complete by early 2026
- L** MDS REUSE PUMP STATION - ARPA
Purpose: Deliver Reuse Water to MDS & County Recreation Complex
Status: In Design; Ph. 1 Package for Bid in April 2026
- M** CENTRAL/SIMMS STEEL WL REPLACEMENT
Purpose: Replace ~2 miles of steel WL
Status: In construction, complete by Dec 2026

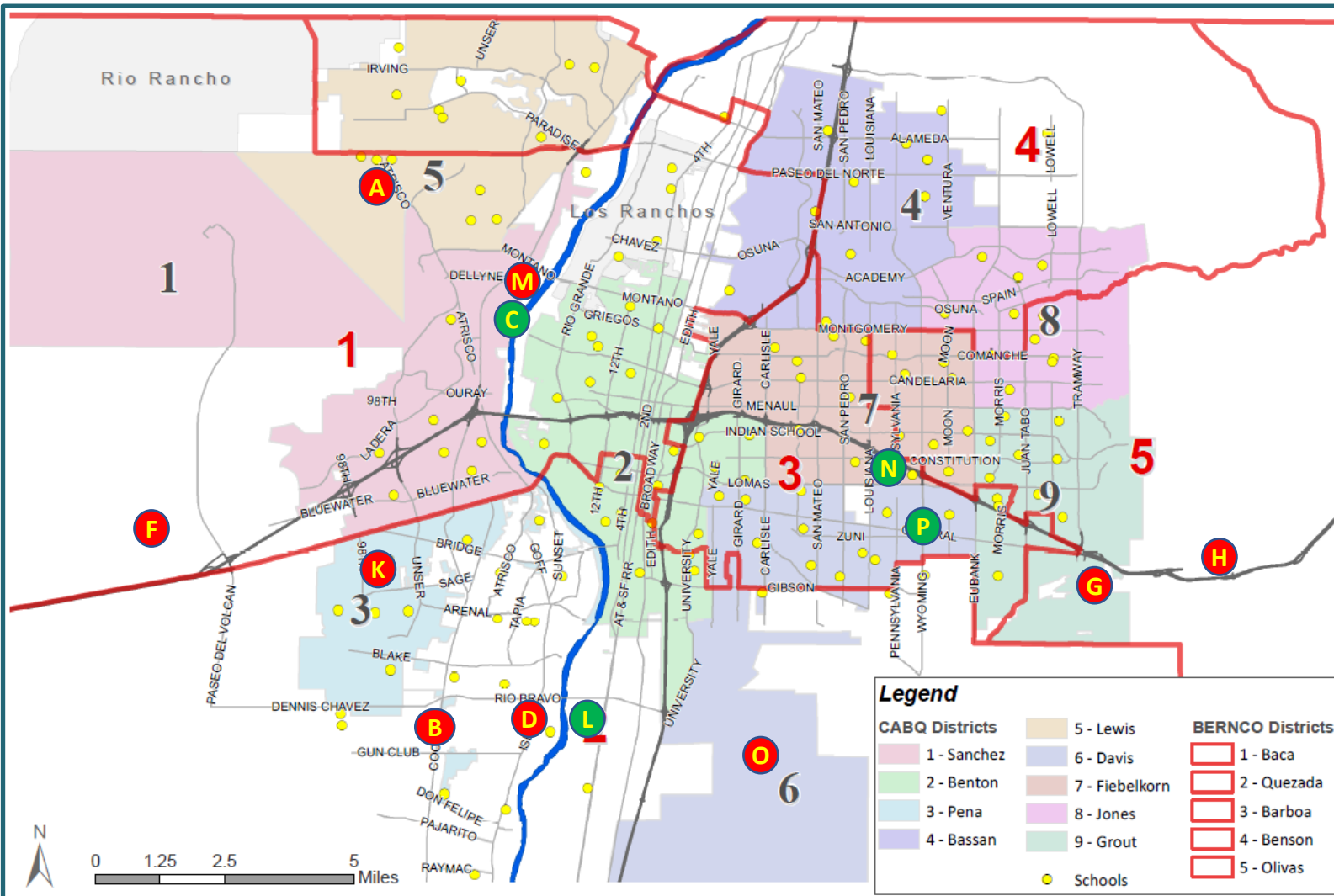


CIP in Action: Emergencies

- 54" Interceptor Collapse (S. of Rio Bravo/Coors)



Priority Rehab Projects



- A** VOLCANO CLIFFS ATF & T-LINE – ARPA/WTB
Purpose: Add 17 MGD drinking water, remove T-Line bottleneck
Status: In Construction – complete by July 2026
- B** SEWER REHAB (Coors/Rio Bravo - EMERGENCY)
Purpose: Rehab collapsed 54" sewer interceptor pipe
Status: Construction ongoing
- C** LS 24 FORCE MAIN PLUG VALVE REPLACEMENT
Purpose: Replace failed FM PVs to enable isolation of dual FMs
Status: Construction in progress – complete by June 2026
- D** SEWER FORCE MAIN REHAB (LS20 on Isleta Blvd)
Purpose: Replace ~1 mile of broken 30" DIP Forcemain pipe
Status: In construction– completion by Aug 2026
- E** TO'HAIJILEE TRANSMISSION LINE – ARPA/WTB
Purpose: Install 8" WL to To'Hajiilee for Water Supply
Status: In Construction – complete by June 2026
- F** 8E TRANSMISSION LINE
Purpose: Install 2nd source of supply to Escondido Reservoir
Status: In Design
- G** CARNUEL WATER & SEWER PROJECTS - ARPA
Purpose: Potable system extension & SAS Phase 1 in Carnuel
Status: WL complete, SAS Ph. 1 complete by early 2026
- H** WEST MESA RESERVOIR REHAB - EMERGENCY
Purpose: Rehab leaking reservoir before Apr. 2026
Status: In Construction – complete by April 2026
- I** SWRP O&M & WAREHOUSE BUILDINGS
Purpose: New facilities to replace existing aged facility bldgs.
Status: In design – bidding by Dec 2026
- J** BOSQUE/WESTSIDE REUSE PROJECT- ARPA
Purpose: Expand reuse to Westside via new reclamation plant
Status: In Design
- K** WINROCK REUSE LINE EXTENSION
Purpose: Extend South Reuse system to new irrigation customers
Status: In construction – complete by early 2026
- L** MDS REUSE PUMP STATION - ARPA
Purpose: Deliver Reuse Water to MDS & County Recreation Complex
Status: In Design; Ph. 1 Package for Bid in April 2026
- M** CENTRAL/SIMMS STEEL WL REPLACEMENT
Purpose: Replace ~2 miles of steel WL
Status: In construction, complete by Dec 2026

