



Technical Customer Advisory Committee

AGENDA

Members

Elias Archuleta	Anjali Mulchandani
Brian Freeman	Jill Peterson
Kerry J. Howe	Mario Nuño-Whelan
Anne Jakle	Andrew Robertson
Donald T. Lopez	

Public participation for this meeting will be via WebEx video conference. To request login information for this meeting or to submit public comment, contact Jordan Salas at jsalas@abcwua.org or 505-289-3100. Requests for login information and public comments must be submitted before 2:00 PM on the date of the meeting.

Thursday, June 4th, 2026

4:00 PM

1441 Mission Ave NE
Conference Room 204

1. Call to Order
2. Approval of Agenda
3. Approval of May 7th, 2026, Action Summary
4. Public Comment
5. FY26 CMAR Reservoir Rehab Program
6. Water 2130 Demand
7. Other Business
8. Adjournment

NOTICE TO PERSONS WITH DISABILITIES: If you have a disability and require special assistance to participate in this meeting, please contact the Water Utility Authority Office, Suite 5012, Albuquerque/Bernalillo County Government Center, phone 289-3100, as soon as possible prior to the meeting date.

An aerial photograph showing two large, circular, grey-colored reservoirs situated in a residential neighborhood. The reservoirs are surrounded by houses with various roof colors (brown, grey, blue) and green trees. The ground around the reservoirs appears to be a mix of dirt and sparse vegetation. The entire image is framed by a white, hand-drawn style border.

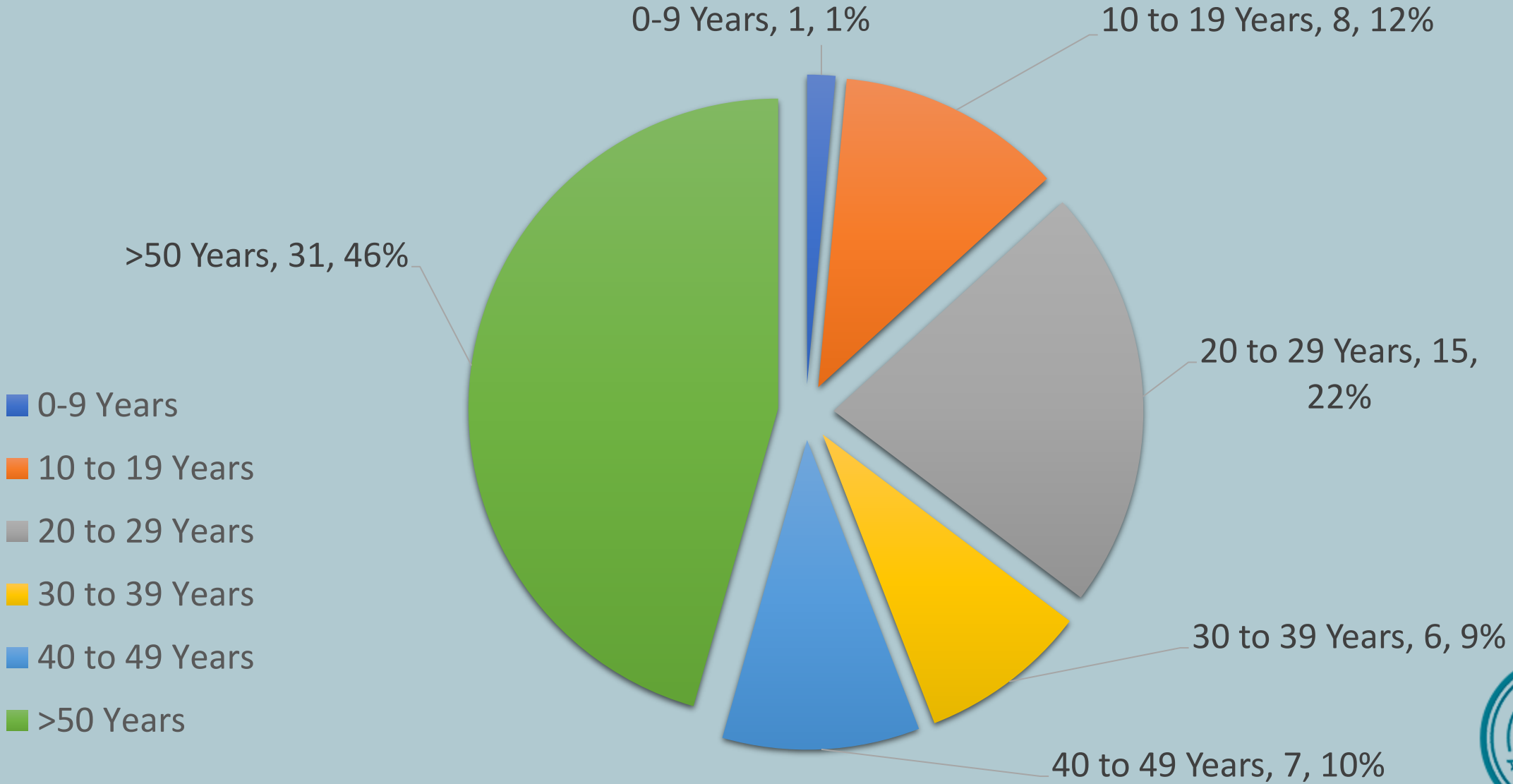
FY26 CMAR Reservoir Rehab Program

FY27 Objective 1.2

Quantify reservoir leakage and system constraints for 65 reservoirs
by isolating up to five reservoirs per year
using hydraulic modeling, field investigations, and multi-day trial isolations
to inform a 10–15-year rehabilitation program
beginning in FY27.



Number of Reservoirs by Age



New Project Approach Needed

- Drivers:
 - Past struggles with on-call contractors performing specialty reservoir rehab work
 - Guessing at scope due to lack of dry inspection
 - Tight construction timeline (low-demand period only)
 - NMED Sanitary survey and subsequent inspection
- Findings:
 - Large number of reservoirs
 - Limited funding
 - Unknown field conditions for especially concrete reservoirs
 - Best repair method varies from reservoir to reservoir
 - Best repair method not determined until reservoir is taken down (especially for concrete)
- Long-term program needed

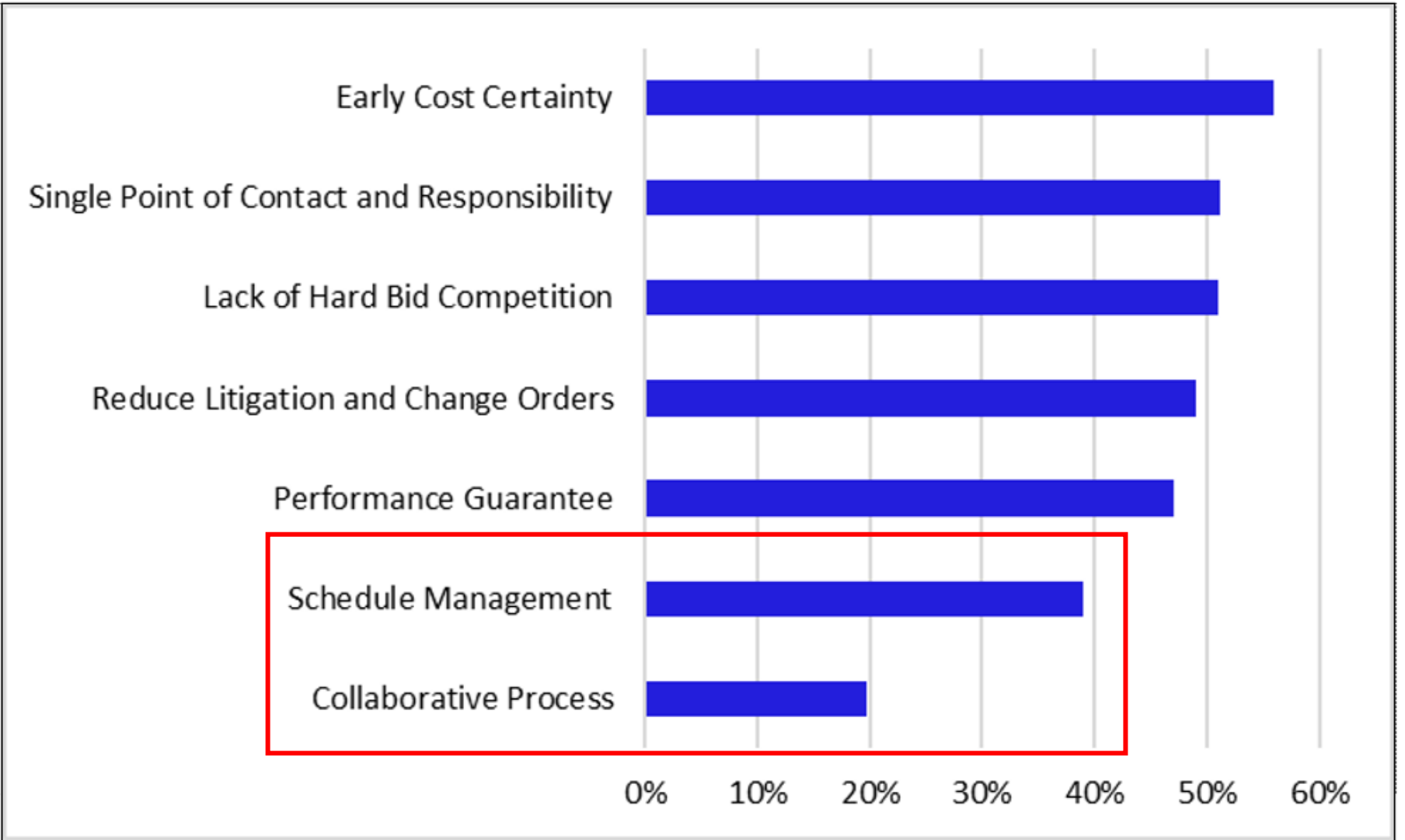
CMAR delivery was selected



Spectrum of Collaborative Delivery Options



Goals of CMAR Collaborative Delivery



El Paso Water's CMAR Experience

- **Successfully using CMAR for all types of projects for the last 10+ years:**
 - Lightened load on Finance and Legal groups
 - Improved Safety program for Contractor-led projects
 - Has increased their use of CIP budget
 - Increased quality of projects and resulting infrastructure assets
 - Improved flow / progress of projects
 - May prefer Design-Built (DB) for well-defined projects, such as pipelines
- **Advantages:**
 - More control to Owner
 - Easier to contractually maneuver changes
 - Helped with pre-purchasing of long lead time items
 - Ability to split large projects into smaller GMPs with smaller budget impacts



El Paso Water CMAR Statistics

- **CMAR Statistics/Info:**
 - 12 active CMARs using \$1.2B of funds over multiple years
 - Major 22 MGD WWTP Expansion - \$500M
 - Advanced Water Purification Plant - \$250M
 - Currently using PCL, Sundt, MGC/Kirby
 - Senate Bill 3 mandates TCEQ requirement of 20psi minimum guarantee for utilities
- **Continue to use Design-Bid-Build for:**
 - Projects <\$3M
 - Specialty Rehab projects (Well Rehab, WL/SAS rehab, etc.)
 - Projects where low-bid is needed to secure best price
- **Done 4 progressive DB projects:**
 - Used when schedule was a strict driver (Fleet building, tunneling)
 - More closed-book, less collaborative
 - Need to select "legacy" consultant-contractor PDB team to build trust

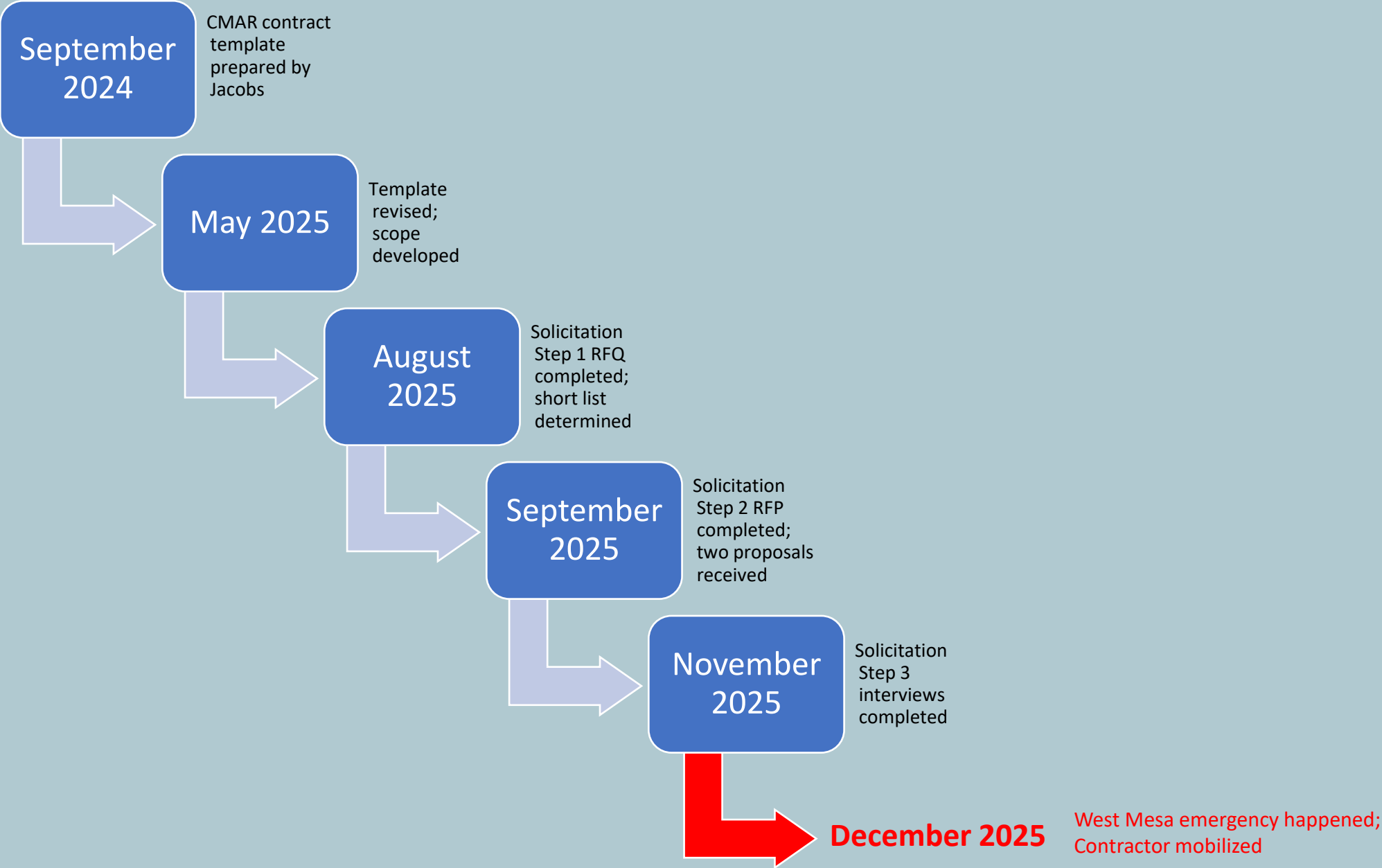


Implementation of CMAR for WA CIP

- Potential projects considered:
 - Bosque WRF
 - Reservoir Rehab
 - ~~LS20 FM Rehab/Replacement~~




WA Journey for CMAR Contractor Selection



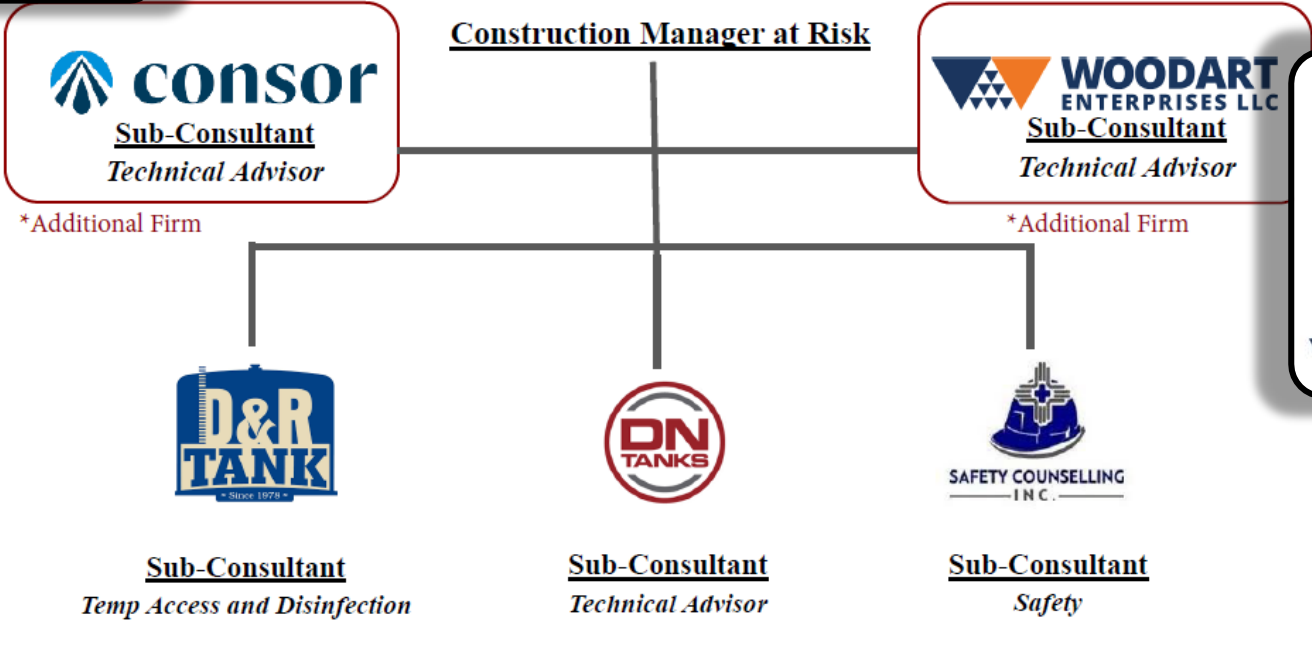

CMAR Contractor: SmithCo



Eleazar Navar, PE, CCM
 Construction Manager
 QA/QC Manager




Rylan Edgmon
 Preconstruction Manager
 Lead Estimator

Simon Woodart Jr.
 Technical Advisor

Smithco has teamed with Woodart to assist in the dry inspections, constructability reviews, schedule development, and cost model estimates for the rehabilitation of the standard concrete reservoirs. As a technical advisor, Simon's support will ensure the most effective and efficient solutions are implemented.




Program Highlights

- Overall timeline FY26 through FY29
- Overall funding ~ \$9M per fiscal year
 - CMAR GMP for each individual reservoir rehab
 - Design engineer of record AECOM



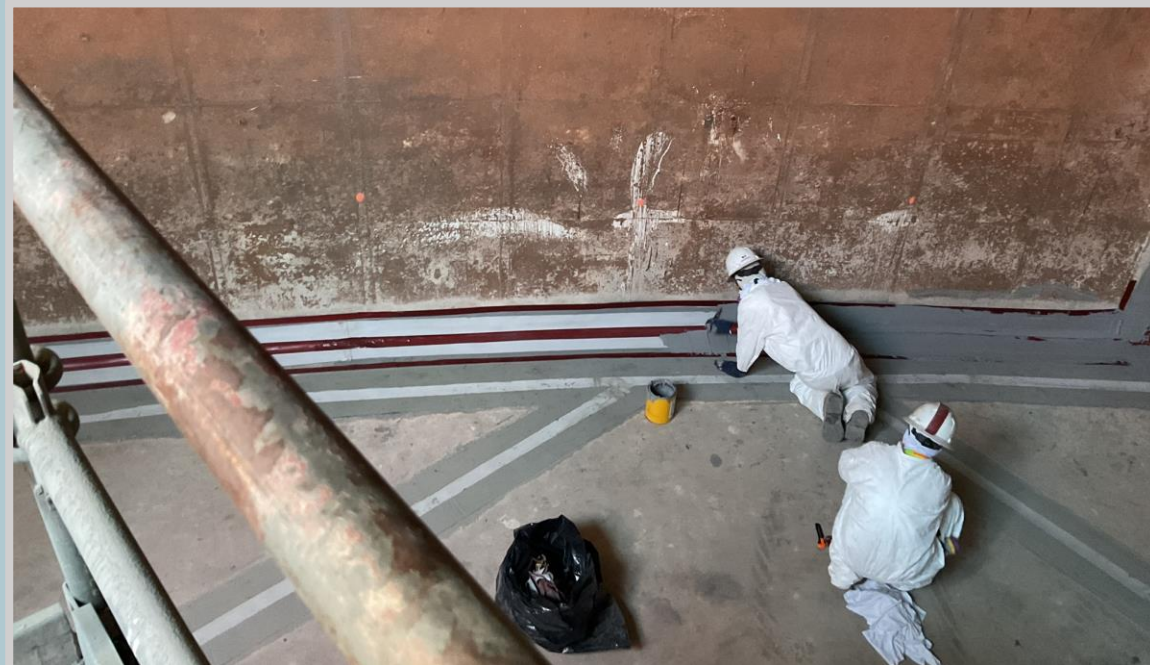
Program Tentative Schedule

Reservoir	Phase I Cleaning and Inspection Services	Phase II Rehab / Construction Services
West Mesa	Completed in November 2025	Completed April 2026
Burton 1	Ongoing in February - May 2026	February - August 2027
Lomas 2 (ext.)	June 2026	May - November 2026
Love 2	Summer 2027	July - December 2028
Webster	Not required	September 2026 - February 2027
Lomas 1	November 2026	December 2026 - March 2027
Duranes	December 2026	August 2027 - January 2028
Glenwood	December 2026	January - July 2028
Charles Wells	April 2027	September 2028 - March 2029



West Mesa

- 1955 construction
- Drained, inspected, and repaired in Jan-April 2026
- Leakage decreased from 250k gpd to 63 gpm
- Under evaluation for potential inclusion for Phase 2 repairs



Burton 1 - Emergency

- 1923 construction
- Drained, inspected, and cleaned
- Only minor cracks repaired in February 2026
- Leakage rate tbd



CIP's Lessons Learned (so far...)

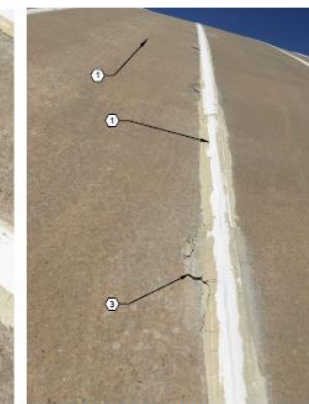
★ Having the right team is key

- Success: getting experienced technical advisor to Contractor with specific concrete reservoir experience
- Large team with experienced crews
 - Crews hit the ground running, vs. previous projects which had "on-job training" (lost time...)
- **Effective dialogue between Ops, Inspectors (IIG), CIP Team, Consultant, and Contractor**
 - Due to emergency status, project moved quickly
 - Some scoping had to be verbal dialogue vs unilateral decisions
- **Ph. I CMAR Services**
 - Dry Inspections have been very detailed (success!)
 - Challenge now: determining whether we do full rehab or focused repairs based on available \$\$
- **Ph. II Construction**
 - WUA needs to be more patient – can't approach everything as an emergency
 - Smithco and sub Woodart worked 4 weeks straight. This is not sustainable
 - Competitive pricing (improvement on on-call pricing)
- **Front-end documents are a work in progress (issues found once documents put into use)**



Webster (Steel) & Lomas 2 Exterior

- Both to be drained, inspected, cleaned, and repaired in late 2026

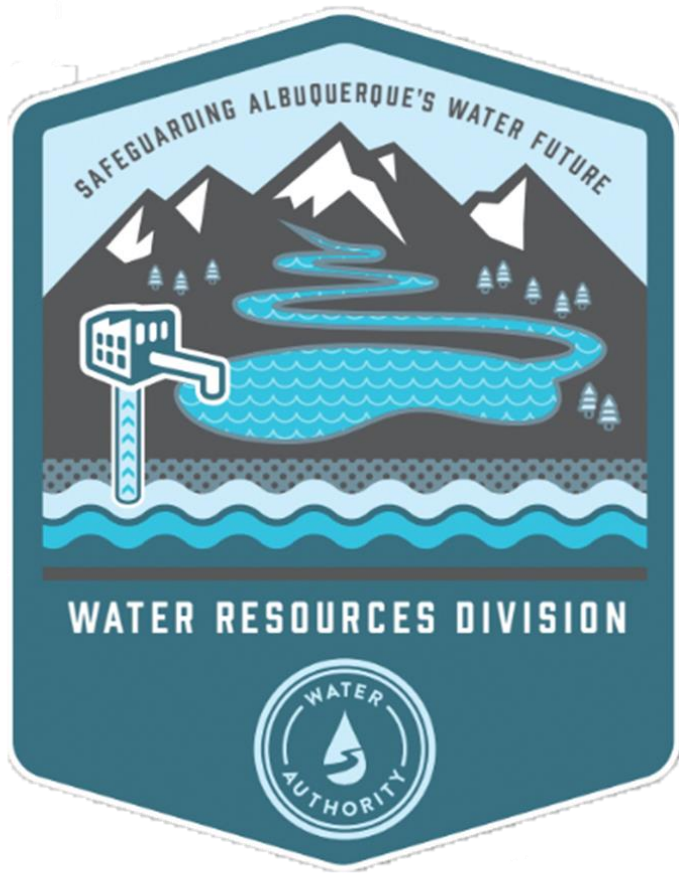


CRITICAL INTERNAL RESERVOIR CMAR TEAM

★ Having the right team is key

- Ege Richardson (Chief Engineer) – exhaustive RFP, Contract, and Scheduling support
- Amelia Symonds (Principal Engineer) – CMAR Reservoir project coordinator, Contract review, Primary Point of Contact
- Emily Crowder (Engineer Associate) – PM and Field Support for specific Reservoir Rehab efforts, close collaboration with CMAR Contractor and subs
- Eric Williams (Principal Engineer) – PM and Field Support for specific Reservoir Rehab projects, close coordination with CMAR Contractor and subs
- GW Operations Staff – German Andrade (Chief Engineer), Jeremy Anderson (Principal Engineer), Martin Louissena (Superintendent), etc.



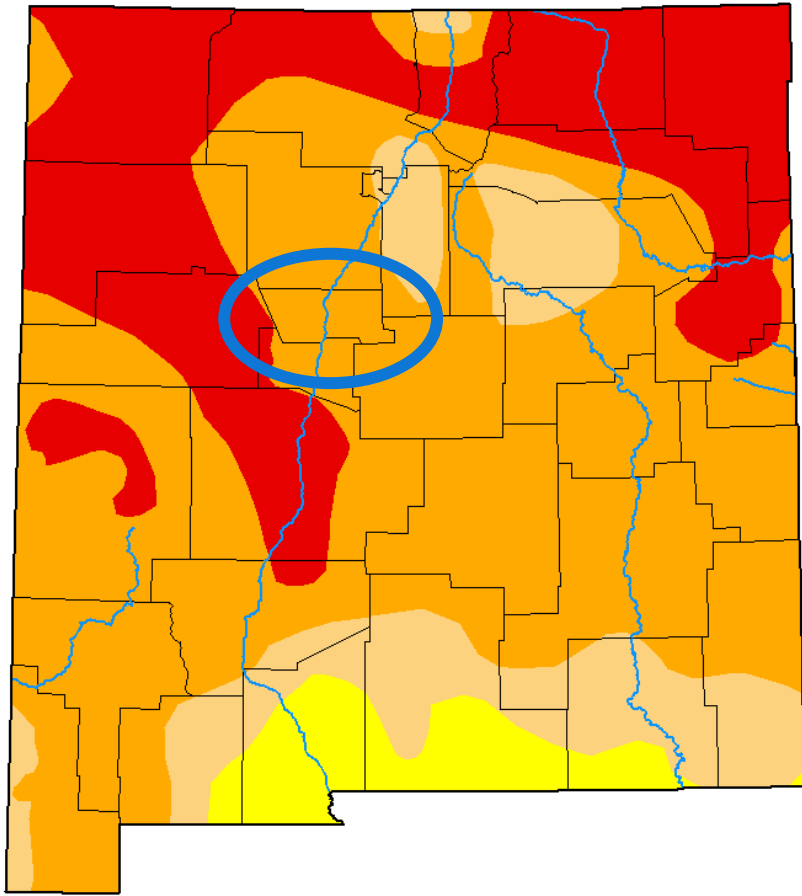


Water Resources Division

**Water 2130:
Demand**

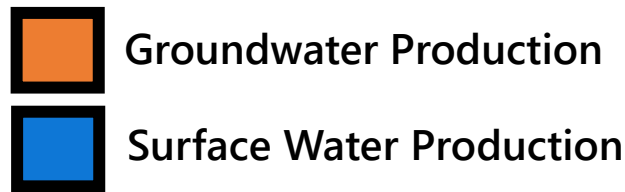
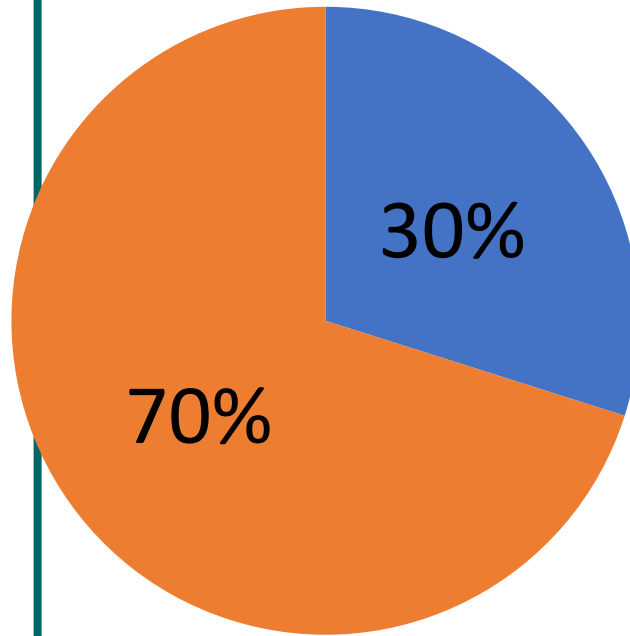
**Mark Kelly, PE
Water Resources Manager**

SUPPLY METRICS SNAPSHOT

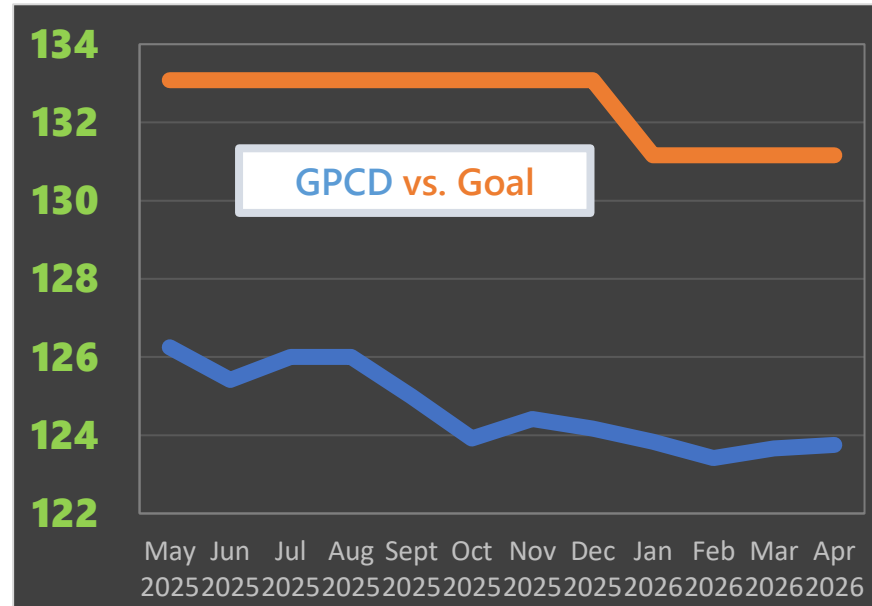
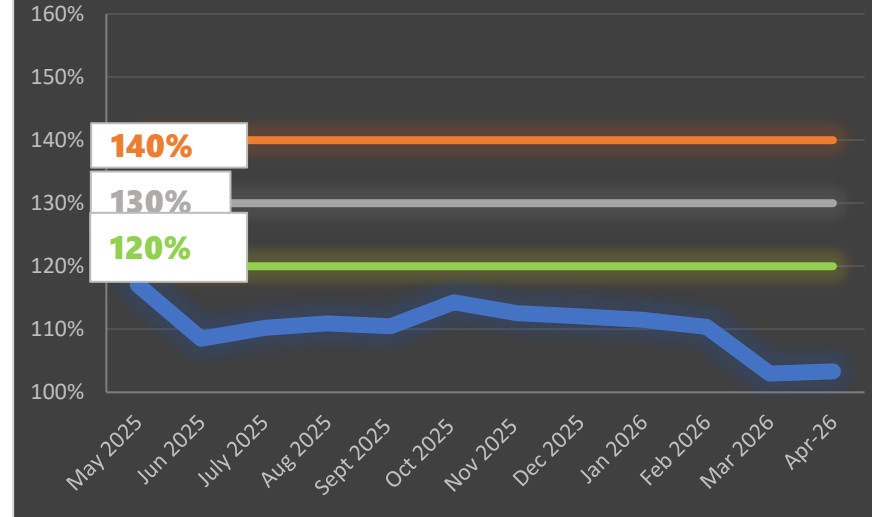


Water Authority
Drought Stage:
Drought Advisory

May 2026
(April Supply Data)



GW Pumping vs Goal



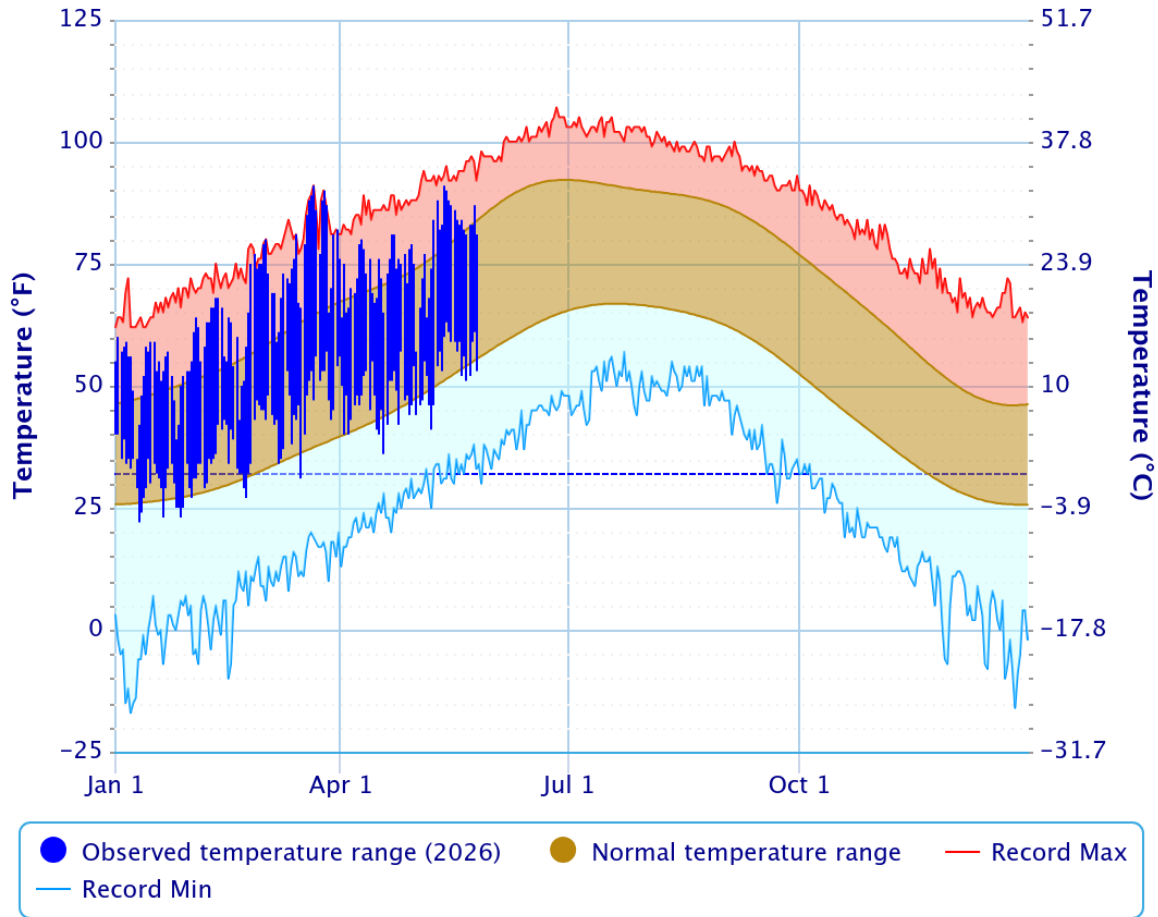
Drought Stages

Groundwater Production / GPCD	DSCI \geq 300	Less than 120% of the Annual GW Production Goal	Between 120% and 130% of GW Production Goal	Between 130% and 140% of GW Production Goal	More than 140% of the GW Production Goal
0 to < 2 GPCD over the goal	Drought Advisory	Drought Advisory	Drought Advisory	Drought Advisory	Drought Watch
2-4 GPCD over the goal	Drought Advisory	Drought Advisory	Drought Watch	Drought Watch	Drought Warning
4-6 GPCD over the goal	Drought Advisory	Drought Advisory	Drought Watch	Drought Warning	Drought Emergency
> 6 GPCD over the goal	Drought Advisory	Drought Watch	Drought Warning	Drought Emergency	Drought Emergency

Temperature and Precipitation

Daily Temperature Data – Albuquerque Area, NM (ThreadEx)

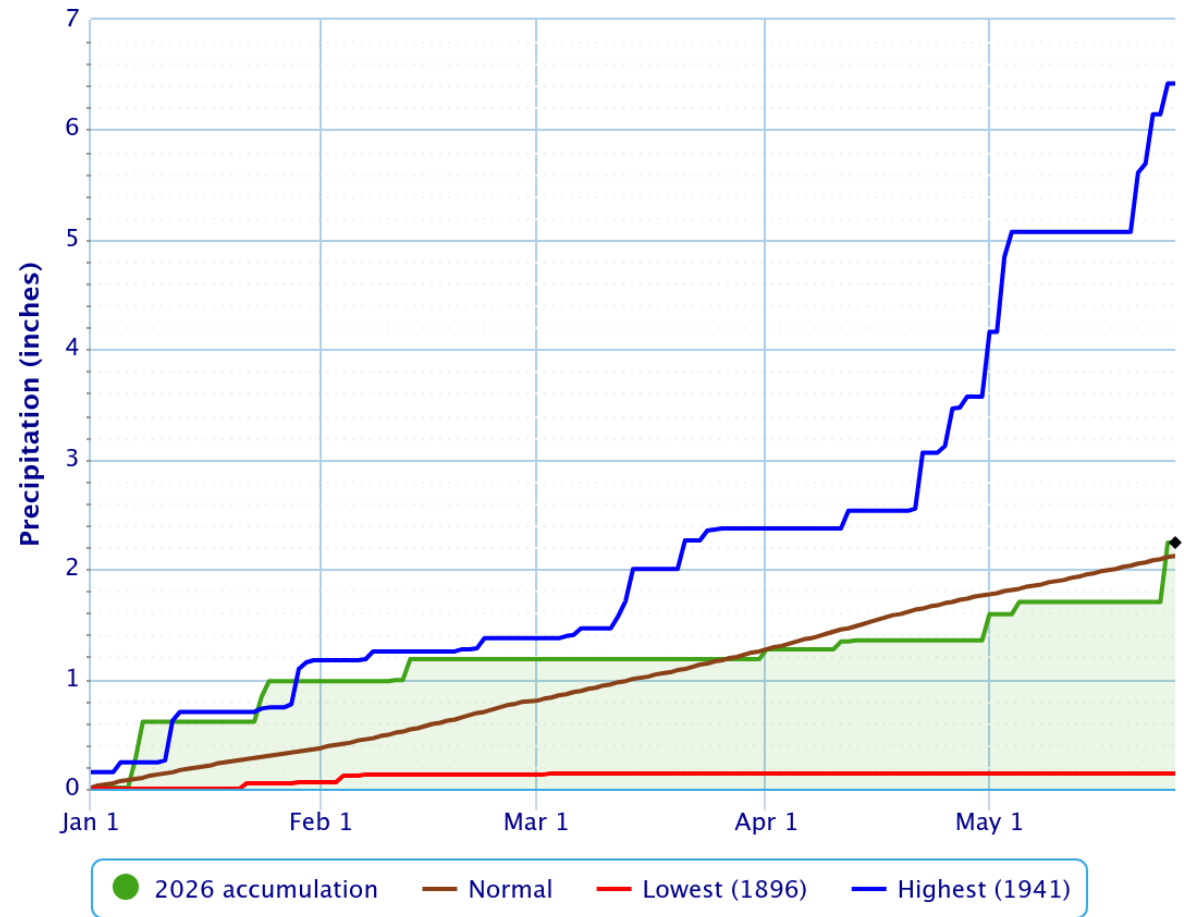
Period of Record – 1891–12–01 to 2026–05–25. Normals period: 1991–2020. Click and drag to zoom chart.



Powered by ACIS

Accumulated Precipitation – Albuquerque Area, NM (ThreadEx)

Click and drag to zoom to a shorter time interval; green/black diamonds represent subsequent/missing values

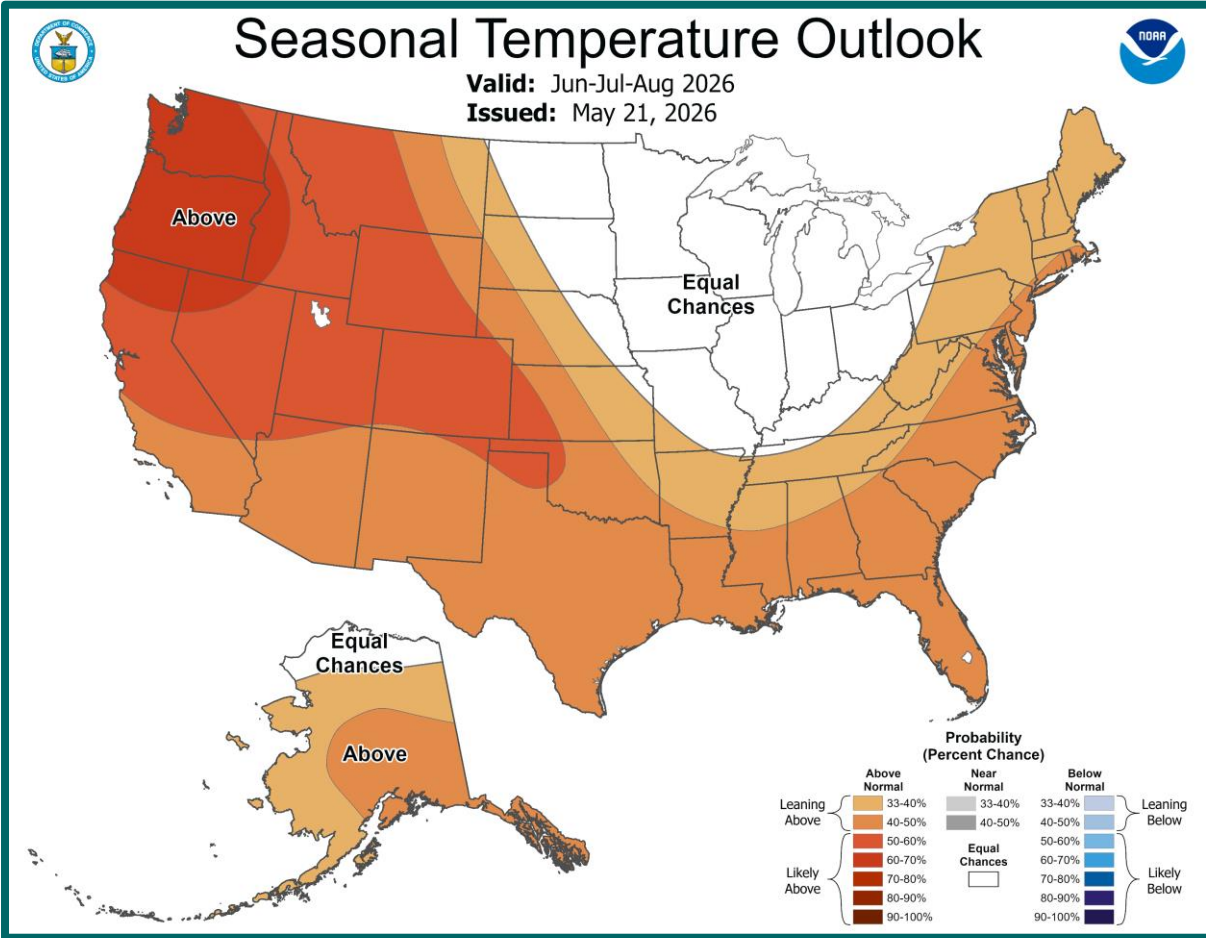


Powered by ACIS

Seasonal Outlook

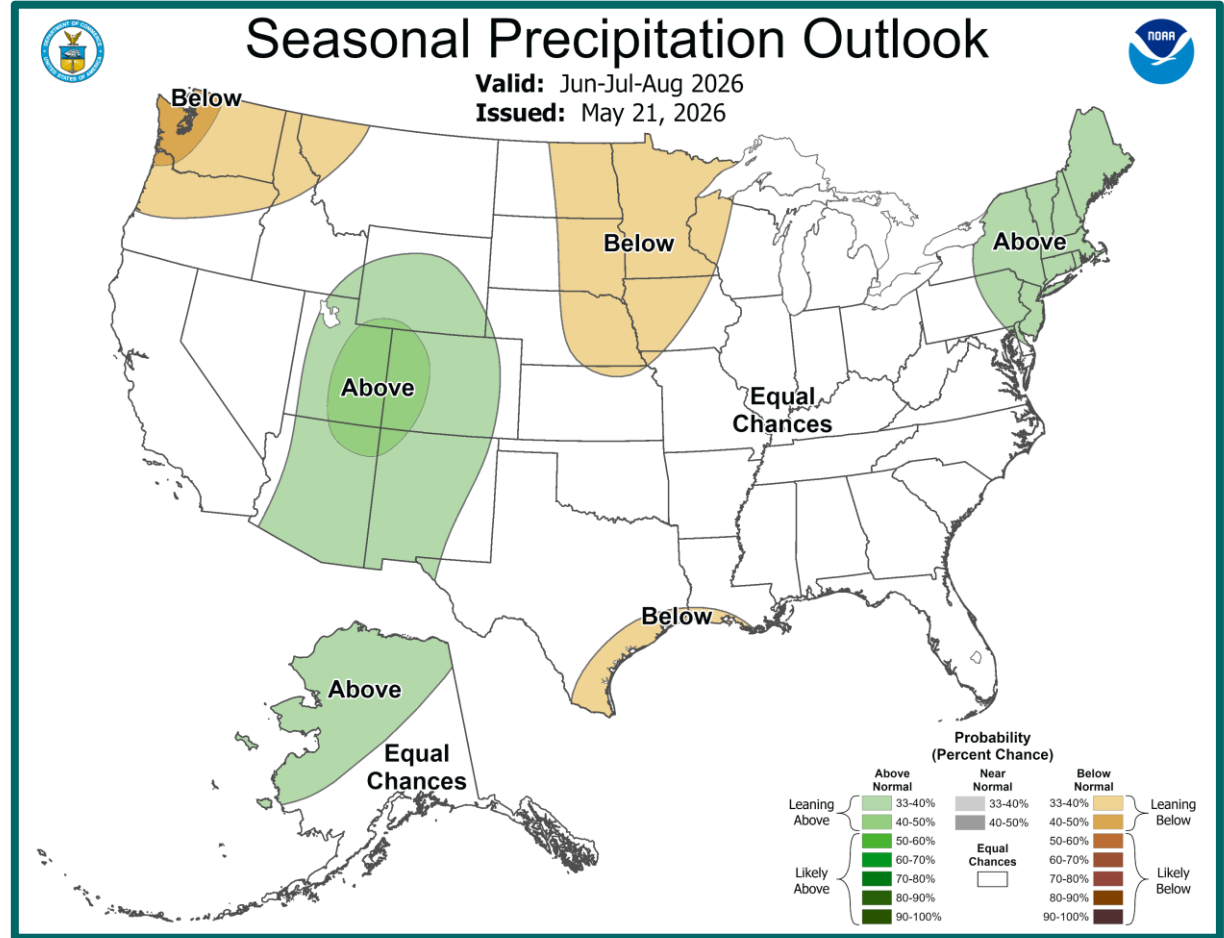
Seasonal Temperature Outlook

Valid: Jun-Jul-Aug 2026
 Issued: May 21, 2026



Seasonal Precipitation Outlook

Valid: Jun-Jul-Aug 2026
 Issued: May 21, 2026



Executive Order on Drought



State of New Mexico

Michelle Lujan Grisham
Governor

EXECUTIVE ORDER 2026-026

DECLARING A DROUGHT AND SEVERE FIRE CONDITIONS THROUGHOUT THE STATE AND URGING MUNICIPAL AND COUNTY GOVERNMENTS TO IMPOSE WATER USE RESTRICTIONS AND FIREWORK BANS

WHEREAS, during the winter of 2025-2026, New Mexico experienced the lowest snowpack, highest temperatures and lowest runoff levels in recorded history;

WHEREAS, according to the United States Drought Monitor, 94% of New Mexico is experiencing various levels of drought conditions;

WHEREAS, current water storage in New Mexico's reservoirs reflect some of the lowest levels on record, and the current conditions mean reduced water supplies for New Mexico's communities, farms, ranchlands, and forests and reduced flows in New Mexico's rivers and streams;

WHEREAS, New Mexico is increasing our drought tracking and response capabilities through the New Mexico Drought Information Portal at www.drought.nm.gov to provide a one-stop-shop for New Mexico communities and residents navigating drought conditions and risks;

WHEREAS, New Mexico's 50-Year Water Action Plan and Implementation Dashboard, available at www.nm.gov/water-security-in-new-mexico, are a direct and tailored response to New Mexico scientists' prediction that we will have up to 25 percent less water in 50 years, steering state resources toward water education, water conservation, development of new water supplies,

Water 2130: Demand



WATER 2130: 2026 Decade Update

SECTION
Water Demand **2**

Historical Population and Projections



Figure 2.2. Historical Population from 1980 to 2024 and Recent Population Projections

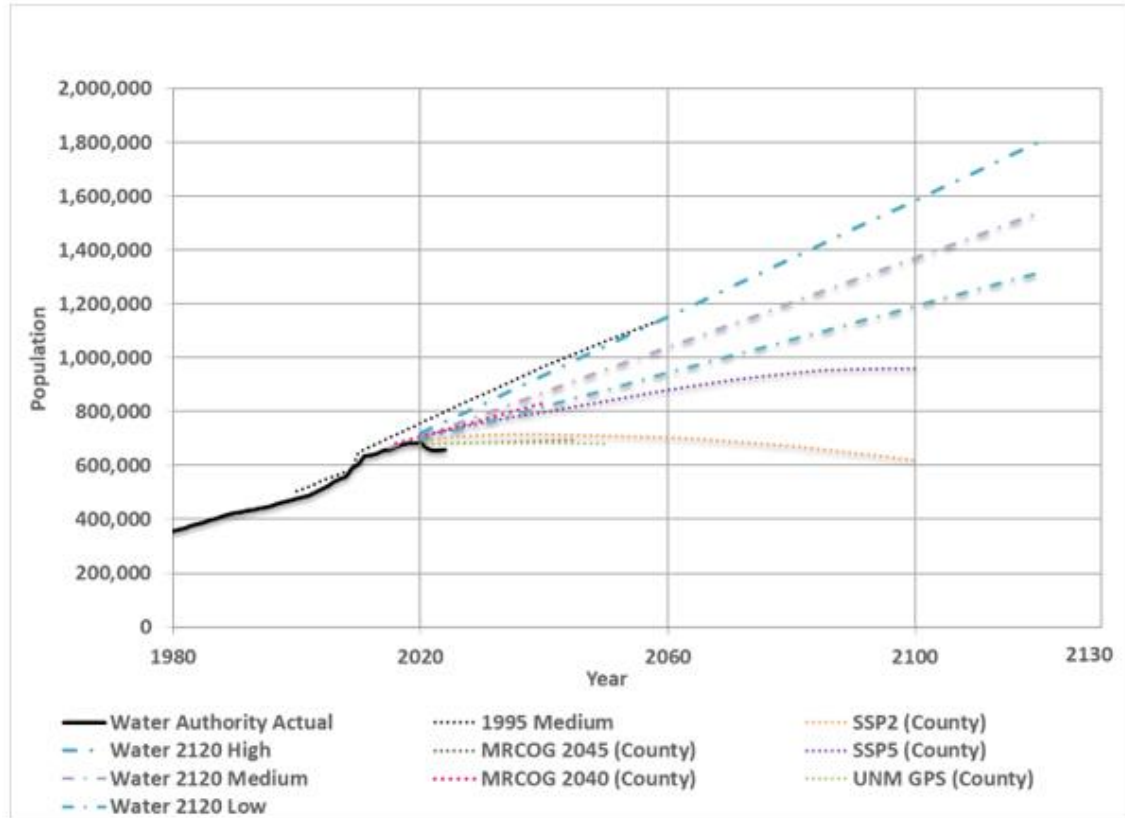
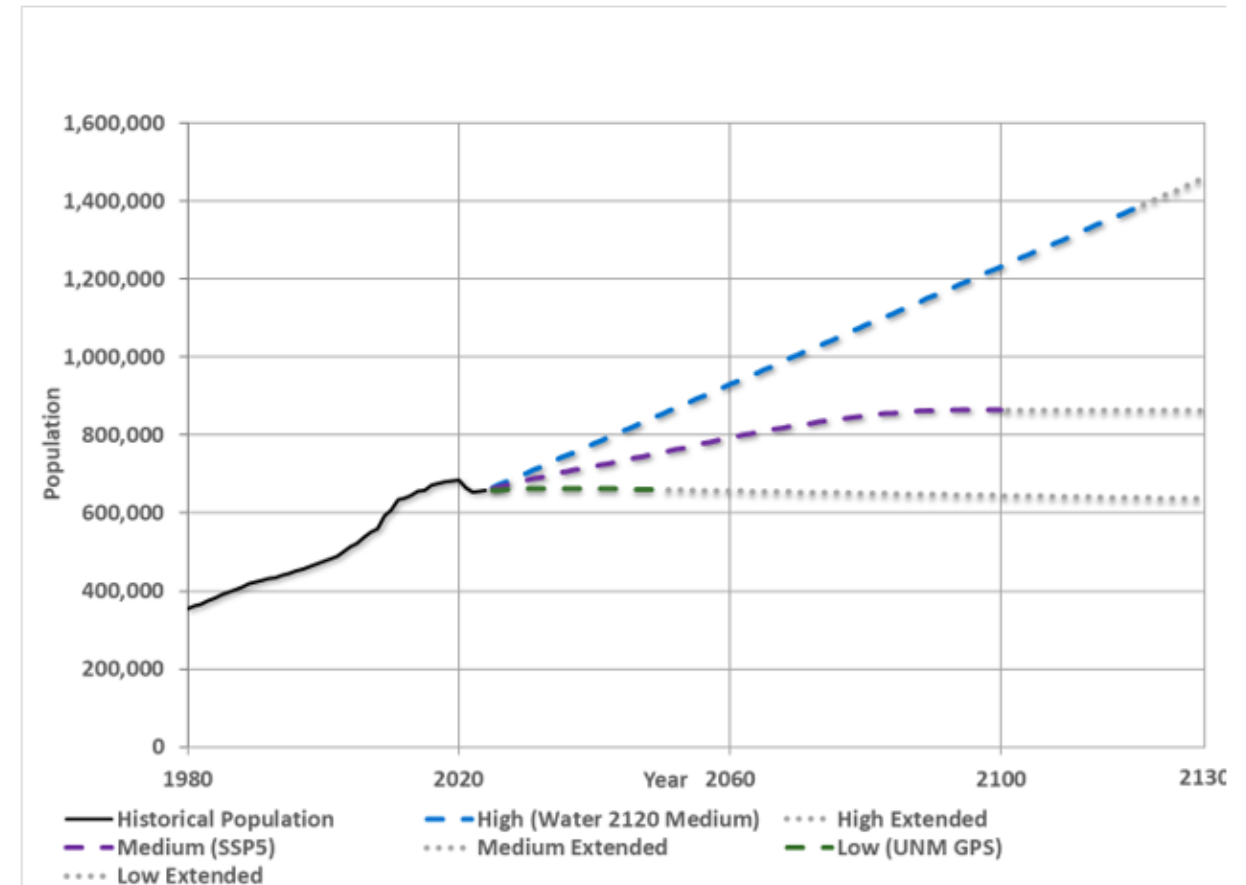


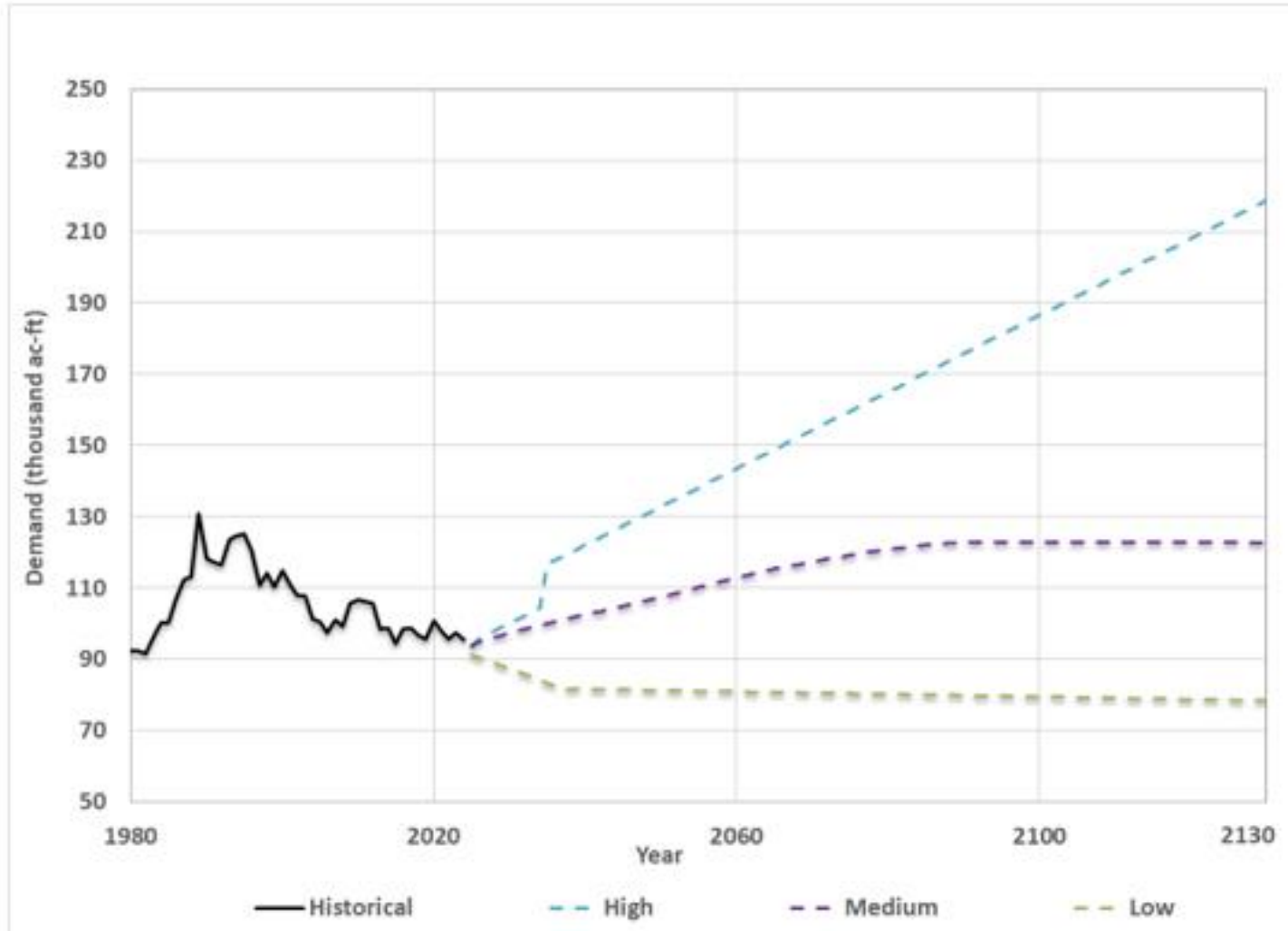
Figure 2.4. Historical Population from 1980 to 2024 and Water 2130 Population Projections



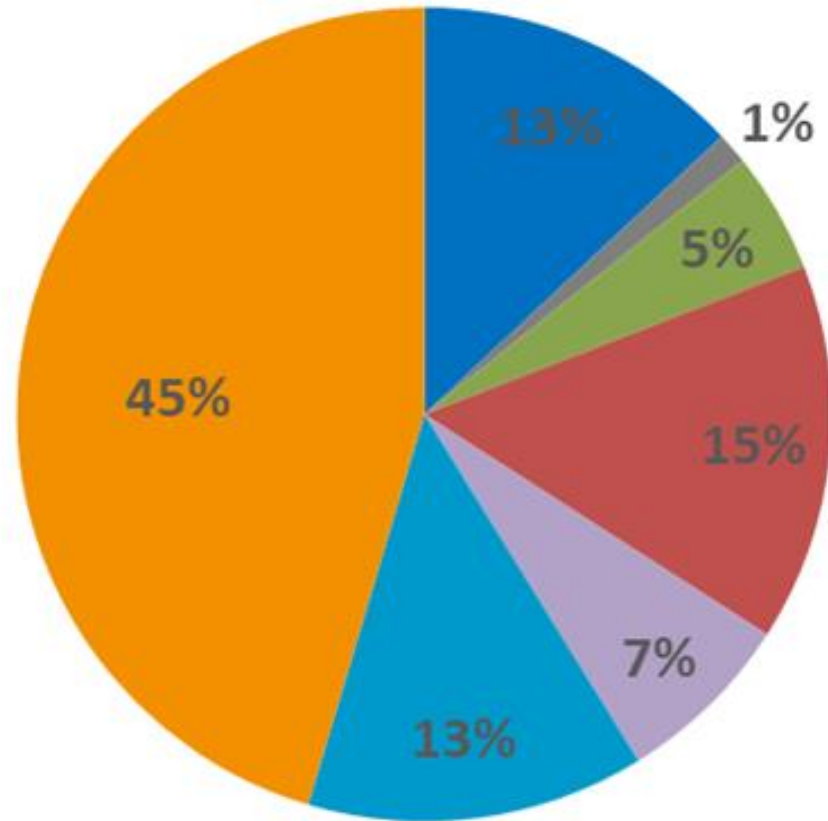
Historical Demand and Projected Demand



Figure 2.5. Historical and Projected Annual Total Water Demand



Demand by Sector



- Commercial
- Industrial
- Institutional
- Multi-family residential
- Non-revenue
- Other
- Single-family residential

Demand Assumptions



- Sectors
 - Current Ratios
- Consumptive Use
 - Utilize 2016-2024 Average
- Monthly Variations
 - Current Ratios

Planning Considerations



- **Conservation Goals**

Per capita demand varies yearly based on temperature, precipitation, drought status, and education campaigns

- **Acute Demand Changes**

New industrial or commercial users impact sector proportions and supply portfolio decisions

- **Population Density Shifts**

Higher density development reduces per capita demand as housing density correlates with less irrigation area

- **Climate Variability**

Higher temperatures and variable precipitation increase outdoor demand, though conservation may counteract pressures

Policy Considerations



Key Findings

- Three demand scenarios (Low: 78,400 afy, Medium: 122,700 afy, High: 218,800 afy by 2130) capture plausible range of futures
- All projections show slower growth than Water 2120, reflecting demographic trends observed over last decade

Strategic Considerations

- Scenarios represent distinct conditions of interest rather than all possible outcomes, allowing preparedness for array of futures
- Disaggregation by sector and indoor/outdoor use enables targeted conservation and supply strategies
- Range intentionally broad to capture uncertainties in population growth, per capita demand, and potential industrial users

Next Steps

- Monitor demographic trends and adjust projections as new data emerges
- Evaluate conservation alternatives in Chapter 5 to meet 110 gpcd goal
- Assess supply portfolio options against demand scenarios to identify gaps
- Continue adaptive planning approach to maintain flexibility as conditions evolve

Customer Conversations



Addressing Aridification Directly

- Water Authority received full San Juan-Chama allocation in only 4 of 9 years between 2016-2024
- The 2025 San Juan-Chama allocation at 39% represents the lowest on record, underscoring urgency of addressing climate-driven water scarcity
- Directly naming aridification signals transparency and climate leadership, potentially building trust with environmentally-conscious residents
- Customer conversations will test which subtitle resonates most—action-oriented framing versus technical specificity versus future-focused language

Planning for a Hotter, Drier Future

Direct acknowledgment of climate reality

Preparing for a Hotter, Drier Future

Action-oriented framing

A Readiness Plan for Aridification in Albuquerque and Bernalillo County

Geographic and technical specificity

Customer Conversations



- Test customer sentiment around **more-stringent conservation measures** such as
- a. Mandatory limits on sprinkler irrigation (e.g., three days per week or odd/even schedule)
 - b. Begin outdoor watering restrictions earlier (e.g., March instead of April)
 - c. "Smart" meter requirements or mandatory rain sensors for all new automated sprinkler system installations
 - d. Water waste fines for watering when it's raining
 - e. Permanently increased water waste fines to drought levels
 - f. Mandatory restrictions on new installation of purely decorative (i.e., non-functional) turf [commercial, institutional customers]
 - g. Mandatory removal of non-functional turf [commercial, institutional customers]
 - h. No sprinkler irrigation between dawn and dusk
 - i. Application of outdoor watering rules even to private well users (may be beyond our jurisdiction, would require state intervention?)
 - j. Adjusting tiered rate structure to raise conservation surcharges and/or make them kick in sooner
 - k. Restrictions on restaurant water service
 - l. Other?

Customer Conversations



Test customer sentiment about **accelerated development of water supply infrastructure** and eventual move to (direct or indirect) potable reuse

- a. Cost/timeline/water savings for non-potable reuse expansion
- b. Cost/timeline/water savings for potable reuse expansion (direct or indirect)
- c. Cost/timeline/water savings for ASR expansion

Explore **messaging** around the level of commitment required by the community to successfully implement Water 2130 in terms of

- a. cost/increased rates
 - i. e.g., "Water doesn't come cheap in the desert"
- b. lifestyle/aesthetic changes
 - i. e.g., "Water? Fine. Water waste? Big Fine." Etc., etc.



Questions?

'Drought Advisory' Water Conservation Measures:



- Increasing public outreach including duration, quantity, frequency, reach, and budget
- Promotional materials that include drought enhancements and focus on drought reminders
- Increase public outreach that emphasizes education and voluntary conservation
- Offer 'Drought Classes' for \$20 rebate to customers

