



# Technical Customer Advisory Committee

## AGENDA

### Members

Melissa Armijo  
Andrew Bernard  
Janie Chermak  
Mike Hightower  
Dave Hill

Amy Miller  
Ege Richardson  
Ron Schwarzwald  
Scott Verhines

---

Thursday, May 2, 2019

4:00 PM

ABCGC – 7th Floor  
Conference Room 7096

---

- |  |           |
|--|-----------|
| 1. Call to Order   | 4:00-4:05 |
| 2. Approval of Agenda  | 4:00-4:05 |
| 3. Approval of March 28, 2019 Action Summary                       | 4:00-4:05 |
| 4. Presentation on Clean Water Act / Safe Drinking Water Act Nexus | 4:05-5:25 |
| 5. Public Comment  | 5:25-5:30 |
| 6. Adjournment   | 5:30      |

NOTICE TO PERSONS WITH DISABILITIES: If you have a disability and require special assistance to participate in this meeting, please contact the Water Utility Authority Office, Suite 5012, Albuquerque/Bernalillo County Government Center, phone 289-3100, as soon as possible prior to the meeting date.



# Technical Customer Advisory Committee

## ACTION SUMMARY

**March 28, 2019**

Members Present:

Janie Chermak  
Mike Hightower  
Amy Miller  
Ron Schwarzwaldner  
Scott Verhines

Members Excused:

Melissa Armijo  
Andrew Bernard  
Dave Hill  
Ege Richardson

Water Authority Staff Present:

Stan Allred, Chief Financial Officer  
Adrienne Candelaria, Customer Service Manager  
Elizabeth Anderson, Water Quality Program Manager  
Frank Roth, Senior Policy Manager

Consultants Present:

Carol Malesky, Stantec  
Siyuan Rao, Stantec

### **Item 1 – Call to Order - Note presence of quorum**

The meeting was called to order at 4:07 pm by Chair Janie Chermak.

### **Item 2 – Approval of Agenda**

Ron Schwarzwaldner made a motion to approve the agenda. Scott Verhines seconded the motion. The motion passed on a 4-0 vote.

For: 4	Chermak, Miller, Schwarzwaldner, Verhines
Against: 0	
Excused: 5	Armijo, Bernard, Hightower, Hill, Richardson

**Item 3 – Approval of January 15, 2019 Action Summary**

Scott Verhines made a motion to approve the action summary as amended. Ron Schwarzwald seconded the motion for the amendment to correct the vote tally for agenda item four. The motion passed on a 4-0 vote.

For: 4 Chermak, Miller, Schwarzwald, Verhines  
Against: 0  
Excused: 5 Armijo, Bernard, Hightower, Hill, Richardson

*Mike Hightower entered the meeting at this time.*

**Item 4 – Water-Sewer Rate Study Update & Water Resource Charge**

Carol Malesky and Siyuan Rao provided an update of the rate study. Ms. Rao reviewed the finance plan components, costs funded by rates, and cost-of-service elements. Ms. Malesky provided an overview of the Water Resource Charge (WRC) methodology. She reviewed the proposed increase in the WRC and provided a comparison of charges for other utilities in the region. The Committee discussed different phase-in options of the WRC. The Committee recommended that the Water Authority phase the WRC over a five-year period and re-evaluate the phase-in during the 2021 Rate Study. Ms. Malesky also discussed the changes to the Utility Expansion Charge (UEC) from the Rate Study. She showed how the UEC methodology is tied to the capital plan, level of service, capacity, and asset replacement value. She compared the proposed charges for water and wastewater to other utilities in the region. The Committee discussed the proposed increase in charges and concurred with staff that the UEC should be adjusted annually based on the ENR construction and building indexes.

**Item 5 – Presentation on FY20 Budget, Goals and Objectives**

Stan Allred provided an overview of the Water Authority's proposed operating and capital budgets for Fiscal Year 2020. He reviewed the budget highlights and assumptions and the projected expenditures and revenues. He also discussed the capital improvement appropriations and the planned spending for the next ten years. Frank Roth provided an overview of the Water Authority's strategic planning process. He reviewed key objectives by goal area for Fiscal Year 2020.

**Item 6 – Public Comment**

Elaine Hebard provided comments.

**Item 7 – Adjournment**

The meeting concluded at 6:10 pm.

Water  
2120

Safe  
Drinking  
Water  
Act

Clean  
Water  
Act

# The Albuquerque Experience Crossing the CWA/SDWA Nexus

TCAC MEETING  
MAY 2, 2019

1

## A day in the Life in NM ...

**Let the Fight Begin - TX v. NM**



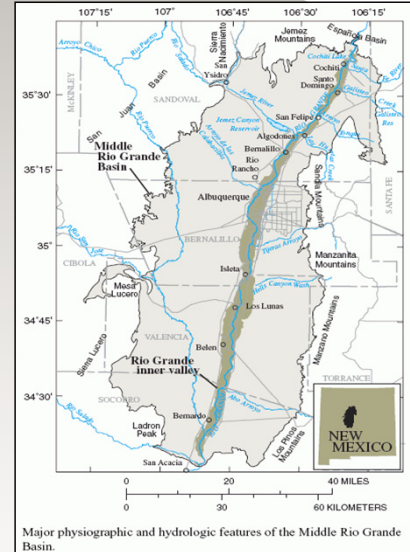
*Discussing Water Rights, A Western Pastime*

2

# Rio Grande Compact and MRG Basin Aquifer



USGS Otowi  
Gage



Major physiographic and hydrologic features of the Middle Rio Grande Basin.

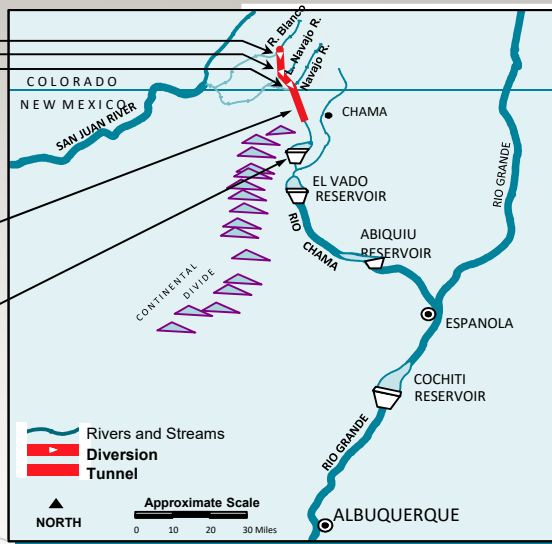
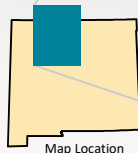
3

# Upper Colorado River Basin Compact - San Juan-Chama Project

DIVERSIONS

26 MILES OF  
TUNNELS

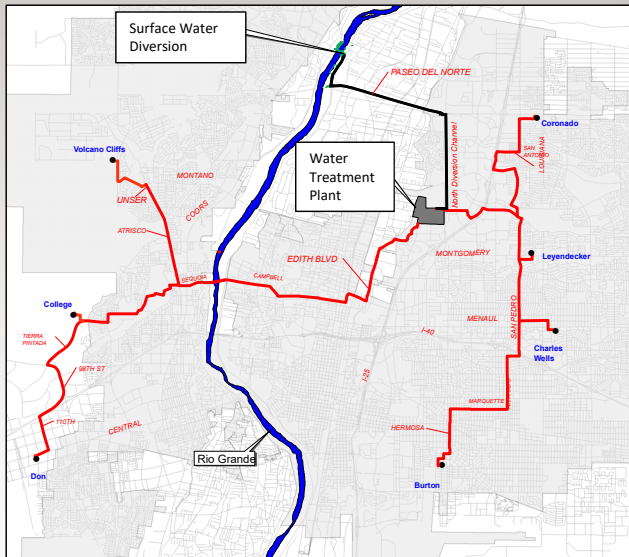
HERON  
RESERVOIR



4



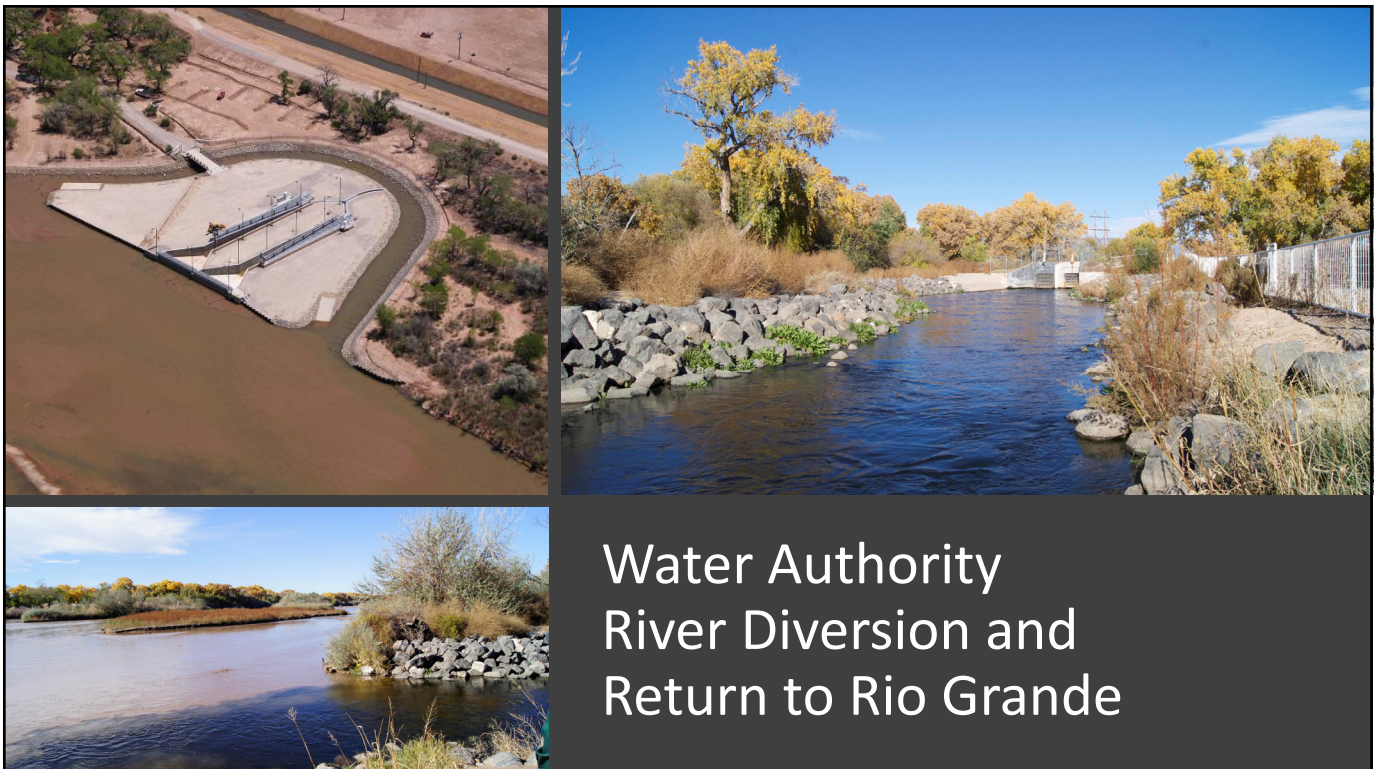
# Drinking Water Project Implemented



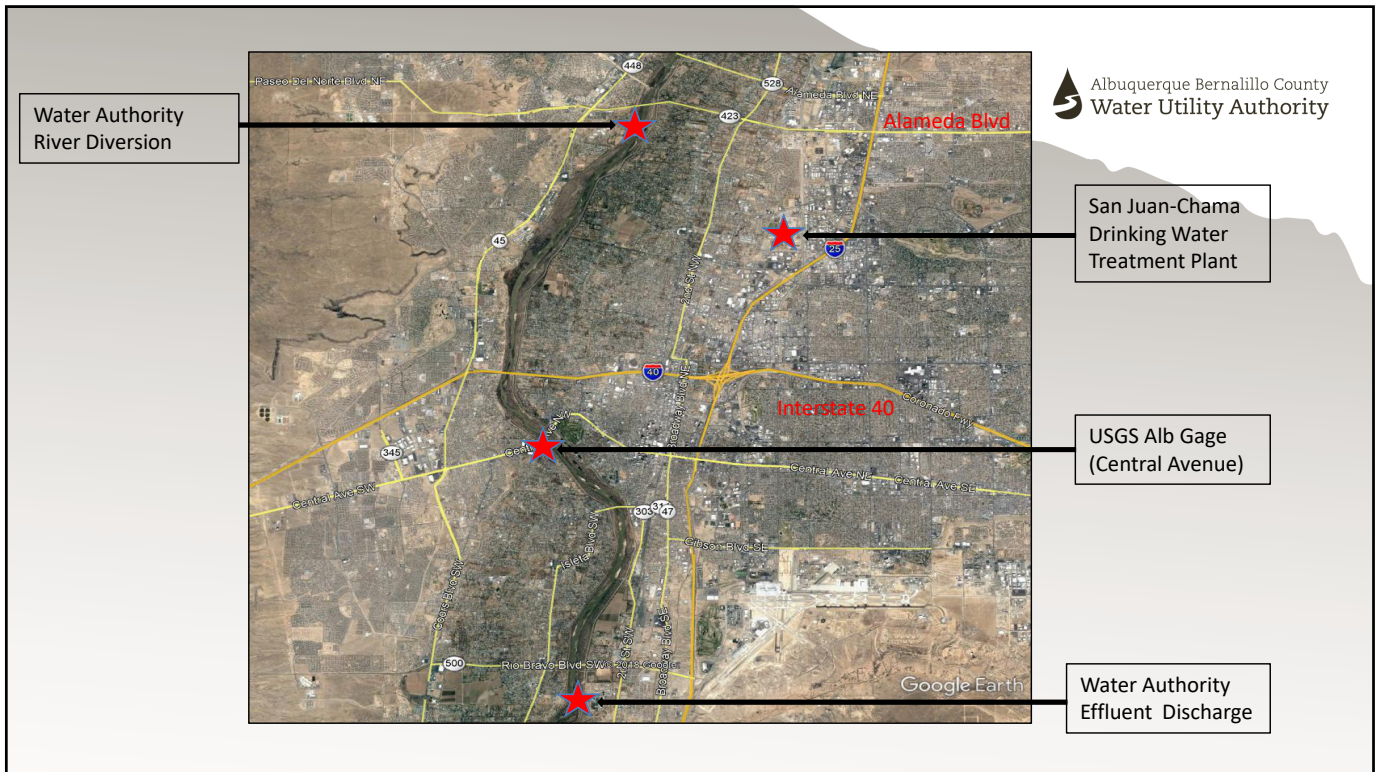
## Multiple Benefits

- Co-locate wells near transmission pipelines for ASR
- New infrastructure can move supply throughout the system
- Reduced need for arsenic treatment

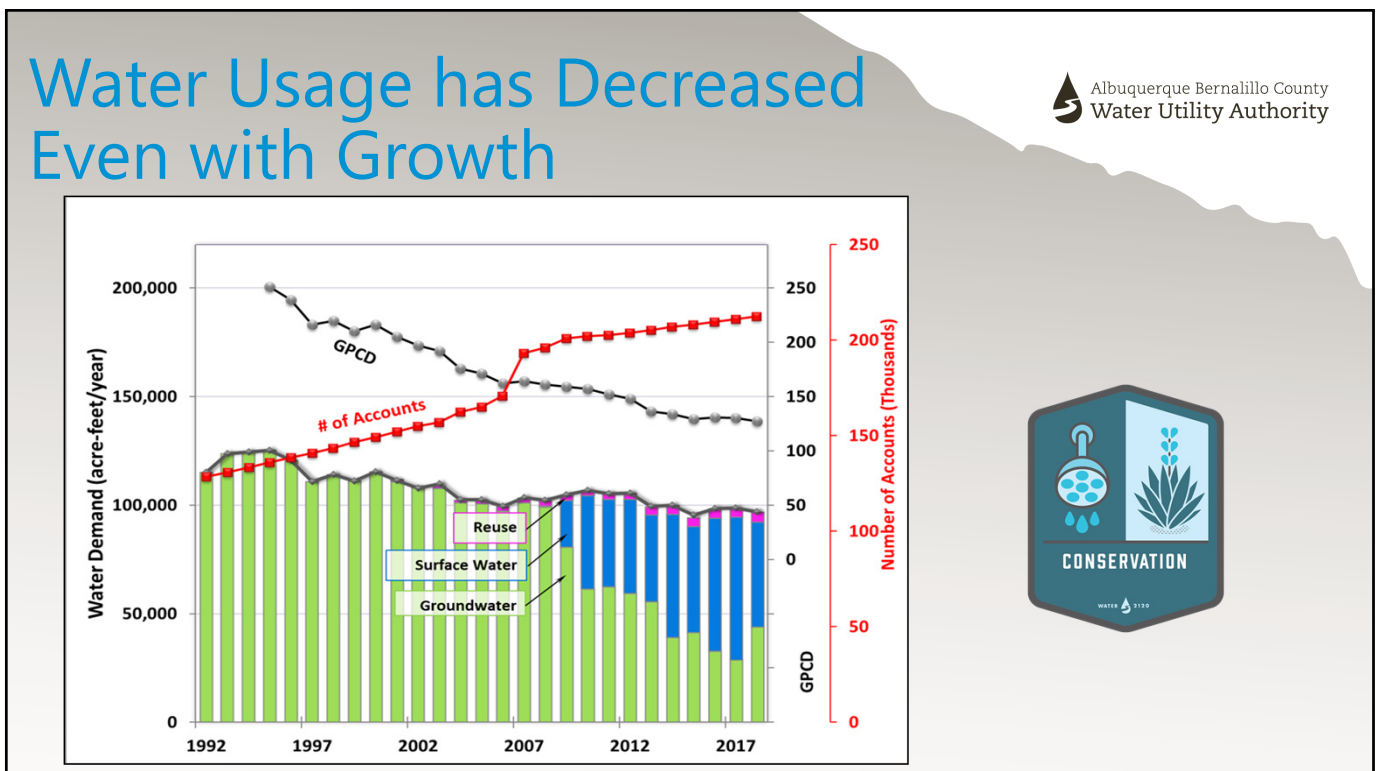
5



6



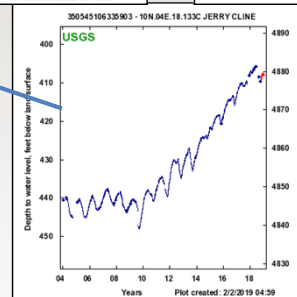
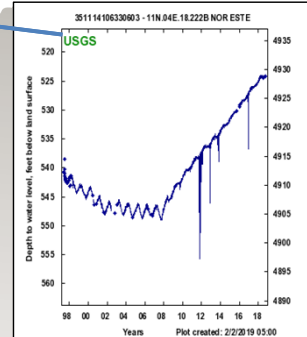
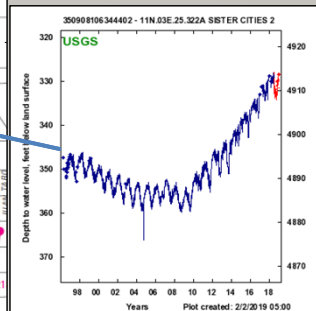
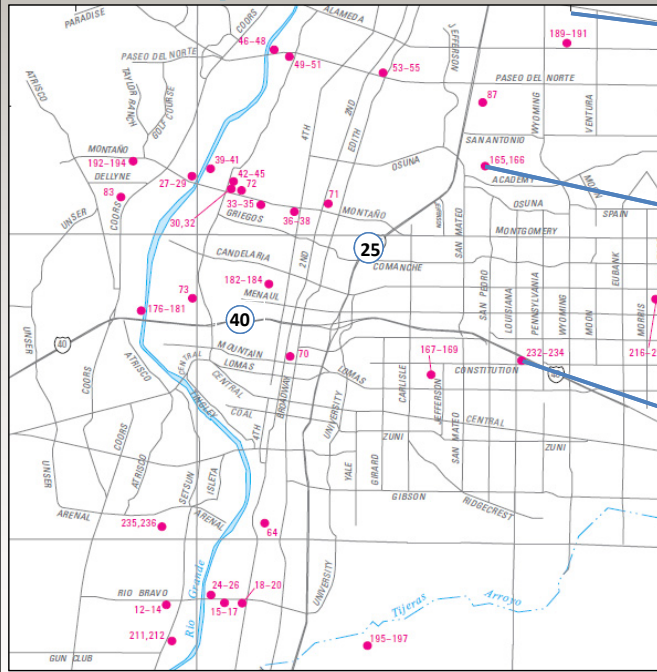
7



8



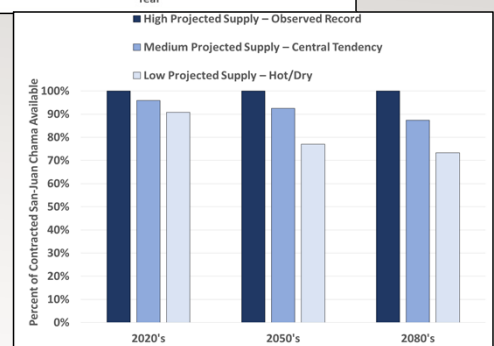
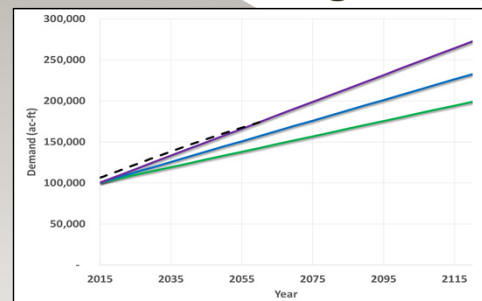
# The Aquifer Continues to Rise



9

# 100-Year Water Plan – How Was it Developed?

- Demand – How much water do we need?
- Supply – How much water do we have?
- Gaps – Do we need additional supply?
- Filling the Gaps – What will the new supplies be?

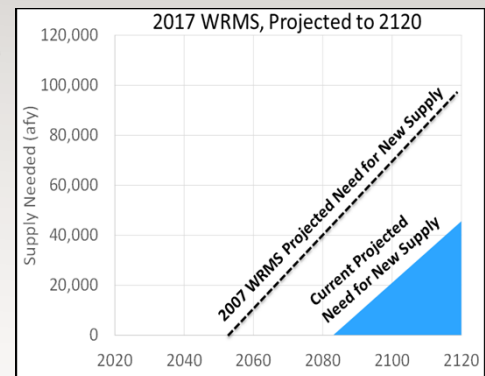


10



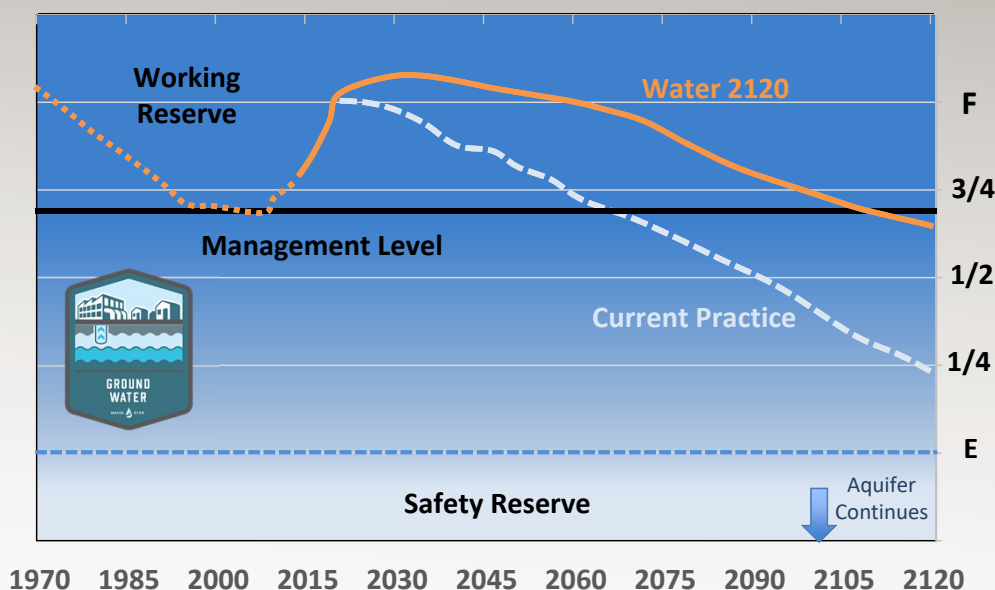
# Filling the Gaps Between Supply and Demand

- Utilize Existing supplies (groundwater and surface water)
- Additional Water Conservation – 110 GPCD in 20 years
- Additional Non-Potable Reuse
  - Connect North I-25 to Southside Reuse
  - Aquifer Storage and Recovery
  - Storage
- Storm water
- Indirect potable reuse (IDPR)
- Watershed management



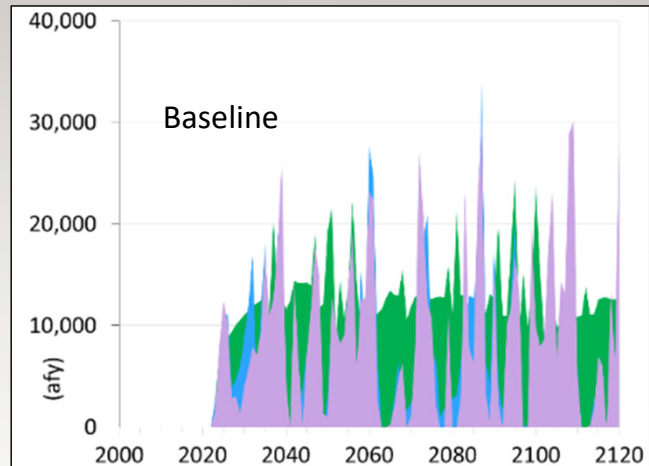
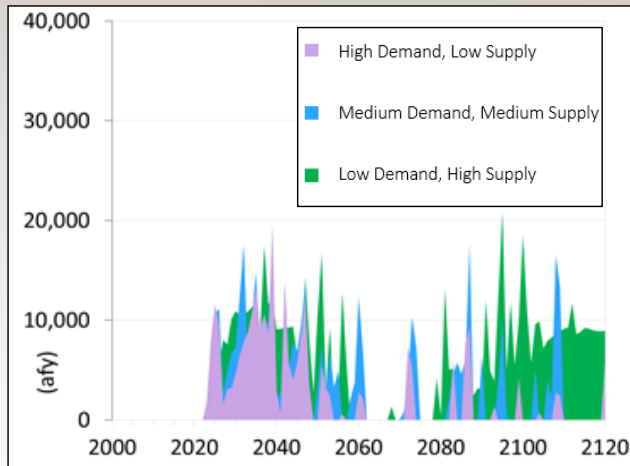
11

# Groundwater Management Plan



12

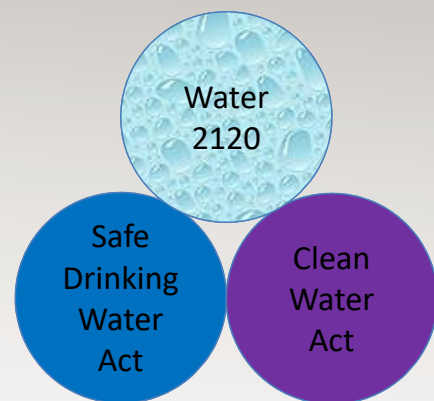
# Available Wastewater Return Flows



13

# Discussion Regarding Intersection of CWA/SDWA

- Arsenic
- Phosphorus
- IDPR/DPR – PPCP
- Flow and River Operations



14

# Arsenic

- Pueblo of Isleta proposes water quality standard of 17 ug/L for arsenic and ammonia in late 1980's
- City of Albuquerque challenges PIWQS
- EPA rulemaking for new SDWA standard for arsenic of 10 ug/L in 2001
- Arsenic effluent discharge is 2.4 ug/L

## Tribes may get "Treatment as a State"

- **Sovereignty** – Tribes, like the state of New Mexico, can have own water quality programs. Examples include Taos, Picuris, Sandia and other pueblos. Tribal standards can exceed federal & state standards.
- **Impact on protecting water quality can be huge.** Isleta and Sandia Pueblo have fought for and secured improvements in wastewater treatment from big cities and industries.



by River Source  
[www.riversource.net](http://www.riversource.net)

15

# Phosphorus

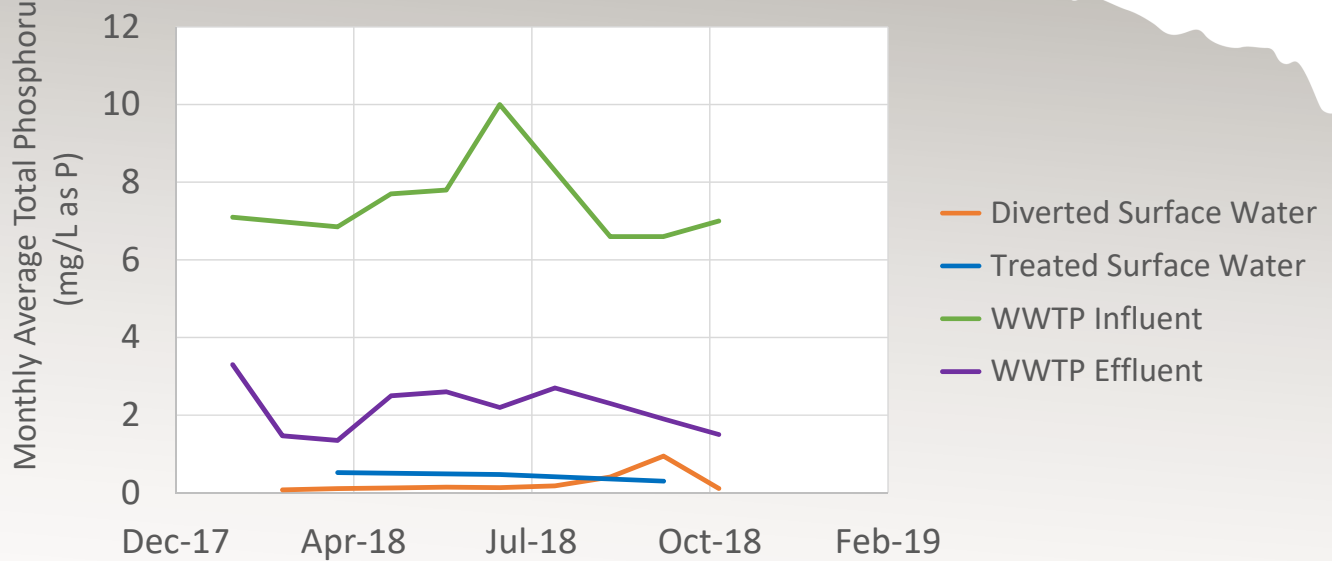
- Ortho/poly phosphate blend added for corrosion control at San Juan-Chama Water Treatment Plant
- 2018 Draft NPDES permit – monthly monitoring for phosphorus



16

## Phosphorus

Total Phosphorus Concentrations from River Intake to WWTP Effluent



17

## Direct/Indirect Potable Reuse

- Excess Return Flows used for Reuse and Drinking Water
- Construct new Advanced Water Treatment Facilities – Southside Water Reclamation Plant or Future Satellite Facilities



Kay Bailey Hutchinson Desal Plant – El Paso, TX

18

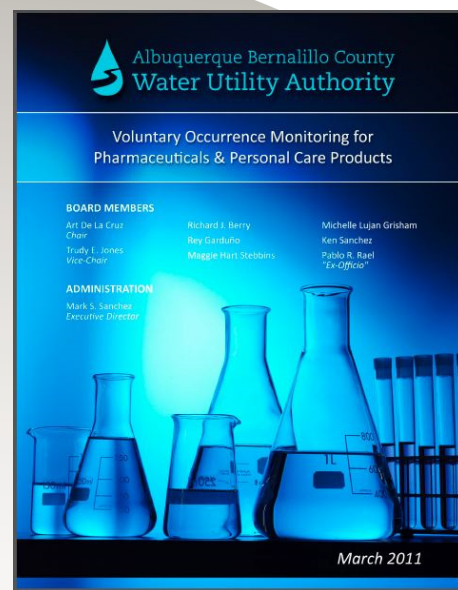
# IDPR/DPR Regulatory Discussion

- NM currently has no regulations in place for IDPR/DPR (California and others developing/implementing regulations)
- Current DPR project under construction in Cloudcroft, NM to meet peak summer demands
- Regulatory/Policy discussion
  - Public Perception
  - Distribution System - chemical compatibility
  - Water Quality Regulations – more stringent than SDWA

19

# Pharmaceuticals and Personal Care Products (PPCPs)

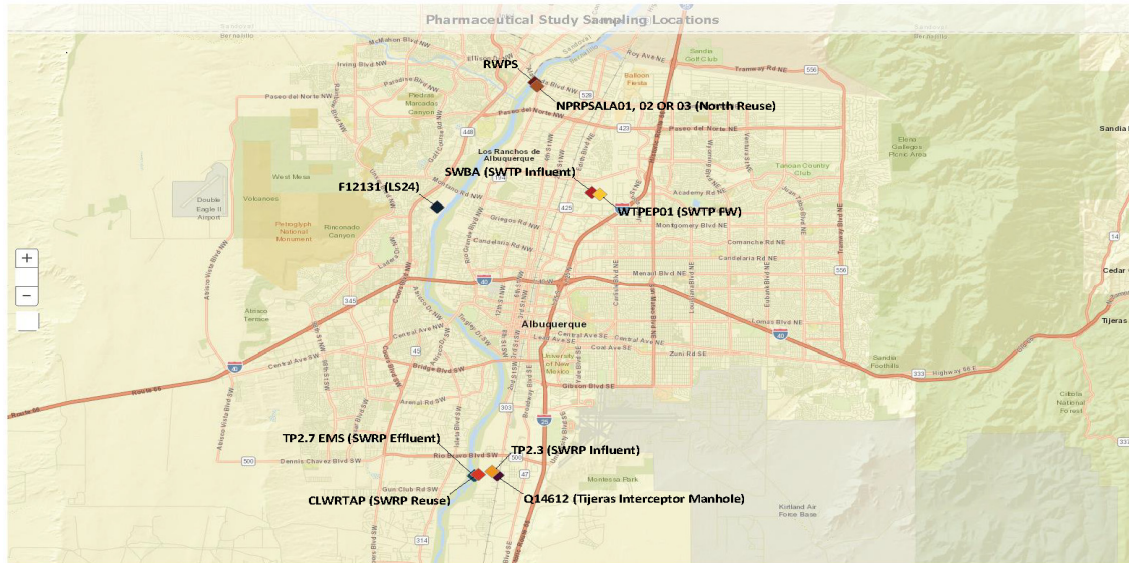
- 2011 Report
  - 113 PPCPs Tested
  - 5 Locations
  - Very Low Level Detections
    - Ibuprofen
    - Testosterone
    - Naproxen
    - Cholesterol



20



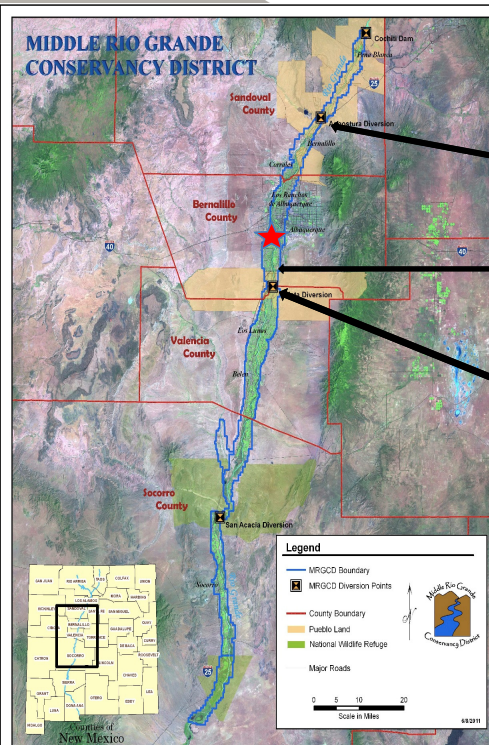
# PPCPs – Sampling Locations for Update



21

## Flow and River Operations

- River Flow diverted at Angostura
- Reduces flow through Albuquerque reach
- ★ (USGS Albuquerque Gage at Central)
- Irrigation returns just upstream of Isleta Diversion but downstream of Pueblo boundary



Angostura Diversion

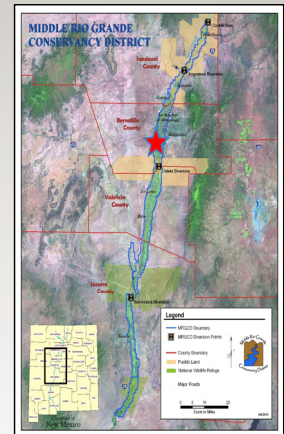
Water Authority  
Effluent Discharge

Isleta Diversion  
and Angostura  
Return

22

# Flow and River Operations

- How do you determine critical low flow with upstream diversions for irrigation on Pueblo of Isleta and non-pueblo downstream
- The river downstream of Isleta diversion is frequently dry in that reach
- How do water quality standards apply if the river is dry and designated uses cannot be obtained?



23

Thank You!

Questions?



24