



# Technical Customer Advisory Committee

## AGENDA

### *Members*

Melissa Armijo  
Andrew Bernard  
Janie Chermak  
Mike Hightower  
Dave Hill

Amy Miller  
Ege Richardson  
Ron Schwarzwaldner  
Scott Verhines

---

Thursday, June 6, 2019

4:00 PM

ABCGC – 7th Floor  
Conference Room 7096

---

- |   |           |
|---|-----------|
| 1. Call to Order  | 4:00-4:05 |
| 2. Approval of Agenda   | 4:00-4:05 |
| 3. Approval of May 2, 2019 Action Summary                             | 4:00-4:05 |
| 4. Presentation on the Capacity Management Operation Maintenance Plan | 4:05-5:05 |
| 5. Public Comment   | 5:05-5:10 |
| 6. Adjournment  | 5:10      |

NOTICE TO PERSONS WITH DISABILITIES: If you have a disability and require special assistance to participate in this meeting, please contact the Water Utility Authority Office, Suite 5012, Albuquerque/Bernalillo County Government Center, phone 289-3100, as soon as possible prior to the meeting date.



# Technical Customer Advisory Committee

## ACTION SUMMARY

May 2, 2019

Members Present:

Andrew Bernard  
Janie Chermak  
Mike Hightower  
Dave Hill  
Amy Miller  
Ege Richardson  
Ron Schwarzwald

Members Excused:

Melissa Armijo  
Scott Verhines

Water Authority Staff Present:

John Stomp, Chief Operations Officer  
Elizabeth Anderson, Water Quality Program Manager  
Frank Roth, Senior Policy Manager

### **Item 1 – Call to Order - Note presence of quorum**

The meeting was called to order at 4:06 pm by Chair Janie Chermak.

### **Item 2 – Approval of Agenda**

Dave Hill made a motion to approve the agenda. Ege Richardson seconded the motion. The motion passed on a 7-0 vote.

|            |   |
|------------|---|
| For: 7     | Bernard, Chermak, Hightower, Hill, Miller, Richardson Schwarzwald |
| Against: 0 |   |
| Excused: 2 | Armijo, Verhines  |

**Item 3 – Approval of March 28, 2019 Action Summary**

Ron Schwarzwaldner made a motion to approve the action summary as amended. Mike Hightower seconded the motion for the amendment to replace the word “recommended” with “suggested” for the text in agenda item four. The motion passed on a 7-0 vote.

For: 7      Bernard, Chermak, Hightower, Hill, Miller, Richardson Schwarzwaldner  
Against: 0  
Excused: 2      Armijo, Verhines

**Item 4 – Presentation on Clean Water Act/ Safe Drinking Water Act Nexus**

John Stomp provided an overview of the intersection of Water 2120, the Clean Water Act, and the Safe Water Drinking Act. He discussed the relationship between water quality standards to Water 2120 policies and projects and reviewed the five major components of this relationship which included arsenic, phosphorus, direct and indirect potable reuse, pharmaceuticals and personal care products, and the impact of river flow on utility operations.

**Item 5 – Public Comment**

Elaine Hebard provided comments.

**Item 6 – Adjournment**

The meeting concluded at 5:20 pm.



# Water Authority CMOM Plan

Technical Customer Advisory  
Committee

June 6, 2019

Mark S. Holstad, PE  
Collection Section Manager



1

## Agenda

- What is a CMOM Plan?
- Why does the Authority have a CMOM Plan?
- What are the components of the Authority CMOM Plan?
- How is the CMOM Program doing so far?
- What about the future?



2

## What is a CMOM Plan?

- Acronym
- Capacity, Management, Operation & Maintenance
- Intended to reduce Sanitary Sewer Overflows (SSOs)
- Many concepts developed in '90s but never became a law



3

## Why does the Authority have a CMOM Plan?

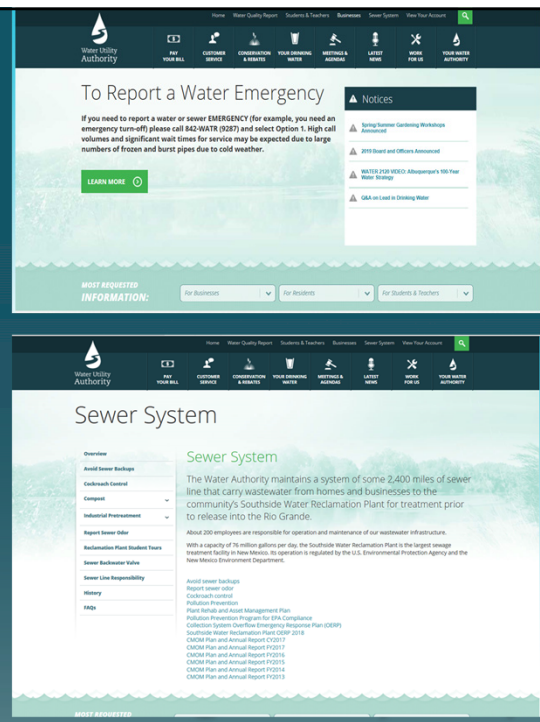
- Required by Water Authority's 10/1/2012 NPDES Permit



4

# What are the components of the Authority CMOM Plan?

- But first, where is it?
- Annual CMOM Report posted to Authority web site



5

# What are the components of the Authority CMOM Plan?

- FOG Policy
- CMOM Annual Report
- CMOM Program Self-Assessment

6

## FOG Policy

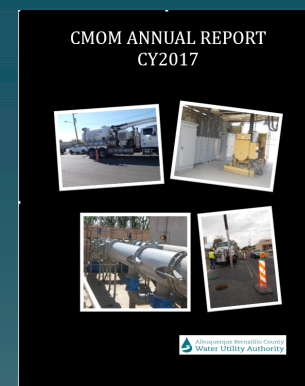
- FOG = **F**ats, **O**ils & **G**rease
- FOG Policy is separate document
- Required by 10/1/2012 NPDES Permit. Approved by EPA.
- Works in conjunction with **S**ewer **U**se and **W**astewater **C**ontrol **O**rdinance (SUO) and **E**nforcement **R**esponse **P**lan (ERP) to reduce SSO rate and FOG loading on SWRP.
- Sets goals for inspecting **F**ood **S**ervice **E**stablishments (FSEs)
- Describes enforcement



7

## CMOM Annual Report

- The CMOM Annual Report provides summary descriptions of CMOM activities (past and planned) and is intended to be a communication tool.
- The report is intended for Water Authority staff, regulatory authorities, customers, and the general public.
- [http://www.abcwua.org/Sewer\\_System.aspx](http://www.abcwua.org/Sewer_System.aspx).

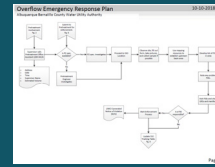
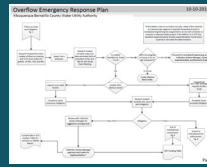


8

# CMOM Annual Report

## • SSO Study Team

- Collection Section – Research Analyst (team lead), Gravity Superintendent, Assistant Superintendent and Closed Circuit Television (CCTV) Supervisor;
- NPDES Pretreatment –Industrial Pretreatment Engineer and Pollution Prevention Specialist.
- The Mission Statement for the Study Team is: *The SSO Study Team will work inter-divisionally to study, analyze and determine causes of previous SSOs to mitigate future SSOs in the Collection System.*



| Year | Line Item # | Location | Event Type | Severity | Root Cause | Corrective Action | Completion Date | Responsible Party | Cost (\$) | Notes |
|------|-------------|----------|------------|----------|------------|-------------------|-----------------|-------------------|-----------|-------|
| 2018 | 10-42       | 10-42    | 10-42      | 10-42    | 10-42      | 10-42             | 10-42           | 10-42             | 10-42     | 10-42 |
| 2017 | 10-42       | 10-42    | 10-42      | 10-42    | 10-42      | 10-42             | 10-42           | 10-42             | 10-42     | 10-42 |
| 2016 | 10-42       | 10-42    | 10-42      | 10-42    | 10-42      | 10-42             | 10-42           | 10-42             | 10-42     | 10-42 |
| 2015 | 10-42       | 10-42    | 10-42      | 10-42    | 10-42      | 10-42             | 10-42           | 10-42             | 10-42     | 10-42 |
| 2014 | 10-42       | 10-42    | 10-42      | 10-42    | 10-42      | 10-42             | 10-42           | 10-42             | 10-42     | 10-42 |
| 2013 | 10-42       | 10-42    | 10-42      | 10-42    | 10-42      | 10-42             | 10-42           | 10-42             | 10-42     | 10-42 |
| 2012 | 10-42       | 10-42    | 10-42      | 10-42    | 10-42      | 10-42             | 10-42           | 10-42             | 10-42     | 10-42 |
| 2011 | 10-42       | 10-42    | 10-42      | 10-42    | 10-42      | 10-42             | 10-42           | 10-42             | 10-42     | 10-42 |
| 2010 | 10-42       | 10-42    | 10-42      | 10-42    | 10-42      | 10-42             | 10-42           | 10-42             | 10-42     | 10-42 |
| 2009 | 10-42       | 10-42    | 10-42      | 10-42    | 10-42      | 10-42             | 10-42           | 10-42             | 10-42     | 10-42 |
| 2008 | 10-42       | 10-42    | 10-42      | 10-42    | 10-42      | 10-42             | 10-42           | 10-42             | 10-42     | 10-42 |
| 2007 | 10-42       | 10-42    | 10-42      | 10-42    | 10-42      | 10-42             | 10-42           | 10-42             | 10-42     | 10-42 |
| 2006 | 10-42       | 10-42    | 10-42      | 10-42    | 10-42      | 10-42             | 10-42           | 10-42             | 10-42     | 10-42 |
| 2005 | 10-42       | 10-42    | 10-42      | 10-42    | 10-42      | 10-42             | 10-42           | 10-42             | 10-42     | 10-42 |
| 2004 | 10-42       | 10-42    | 10-42      | 10-42    | 10-42      | 10-42             | 10-42           | 10-42             | 10-42     | 10-42 |
| 2003 | 10-42       | 10-42    | 10-42      | 10-42    | 10-42      | 10-42             | 10-42           | 10-42             | 10-42     | 10-42 |
| 2002 | 10-42       | 10-42    | 10-42      | 10-42    | 10-42      | 10-42             | 10-42           | 10-42             | 10-42     | 10-42 |
| 2001 | 10-42       | 10-42    | 10-42      | 10-42    | 10-42      | 10-42             | 10-42           | 10-42             | 10-42     | 10-42 |
| 2000 | 10-42       | 10-42    | 10-42      | 10-42    | 10-42      | 10-42             | 10-42           | 10-42             | 10-42     | 10-42 |
| 1999 | 10-42       | 10-42    | 10-42      | 10-42    | 10-42      | 10-42             | 10-42           | 10-42             | 10-42     | 10-42 |
| 1998 | 10-42       | 10-42    | 10-42      | 10-42    | 10-42      | 10-42             | 10-42           | 10-42             | 10-42     | 10-42 |
| 1997 | 10-42       | 10-42    | 10-42      | 10-42    | 10-42      | 10-42             | 10-42           | 10-42             | 10-42     | 10-42 |
| 1996 | 10-42       | 10-42    | 10-42      | 10-42    | 10-42      | 10-42             | 10-42           | 10-42             | 10-42     | 10-42 |
| 1995 | 10-42       | 10-42    | 10-42      | 10-42    | 10-42      | 10-42             | 10-42           | 10-42             | 10-42     | 10-42 |
| 1994 | 10-42       | 10-42    | 10-42      | 10-42    | 10-42      | 10-42             | 10-42           | 10-42             | 10-42     | 10-42 |
| 1993 | 10-42       | 10-42    | 10-42      | 10-42    | 10-42      | 10-42             | 10-42           | 10-42             | 10-42     | 10-42 |
| 1992 | 10-42       | 10-42    | 10-42      | 10-42    | 10-42      | 10-42             | 10-42           | 10-42             | 10-42     | 10-42 |
| 1991 | 10-42       | 10-42    | 10-42      | 10-42    | 10-42      | 10-42             | 10-42           | 10-42             | 10-42     | 10-42 |
| 1990 | 10-42       | 10-42    | 10-42      | 10-42    | 10-42      | 10-42             | 10-42           | 10-42             | 10-42     | 10-42 |
| 1989 | 10-42       | 10-42    | 10-42      | 10-42    | 10-42      | 10-42             | 10-42           | 10-42             | 10-42     | 10-42 |
| 1988 | 10-42       | 10-42    | 10-42      | 10-42    | 10-42      | 10-42             | 10-42           | 10-42             | 10-42     | 10-42 |
| 1987 | 10-42       | 10-42    | 10-42      | 10-42    | 10-42      | 10-42             | 10-42           | 10-42             | 10-42     | 10-42 |
| 1986 | 10-42       | 10-42    | 10-42      | 10-42    | 10-42      | 10-42             | 10-42           | 10-42             | 10-42     | 10-42 |
| 1985 | 10-42       | 10-42    | 10-42      | 10-42    | 10-42      | 10-42             | 10-42           | 10-42             | 10-42     | 10-42 |
| 1984 | 10-42       | 10-42    | 10-42      | 10-42    | 10-42      | 10-42             | 10-42           | 10-42             | 10-42     | 10-42 |
| 1983 | 10-42       | 10-42    | 10-42      | 10-42    | 10-42      | 10-42             | 10-42           | 10-42             | 10-42     | 10-42 |
| 1982 | 10-42       | 10-42    | 10-42      | 10-42    | 10-42      | 10-42             | 10-42           | 10-42             | 10-42     | 10-42 |
| 1981 | 10-42       | 10-42    | 10-42      | 10-42    | 10-42      | 10-42             | 10-42           | 10-42             | 10-42     | 10-42 |
| 1980 | 10-42       | 10-42    | 10-42      | 10-42    | 10-42      | 10-42             | 10-42           | 10-42             | 10-42     | 10-42 |

Table 3 Summary of Causes from SSO Study

| 10-42, 10-48 Causes    | Total     | % of Total  |
|------------------------|-----------|-------------|
| Barp                   | 2         | 8%          |
| Construction           | 6         | 25%         |
| Construction/Debris    | 1         | 4%          |
| Construction/Equipment | 1         | 4%          |
| Cause Unknown          | 3         | 13%         |
| Debris                 | 1         | 4%          |
| Grease                 | 1         | 4%          |
| Line Failure           | 2         | 8%          |
| Roots                  | 4         | 17%         |
| Surcharged             | 1         | 4%          |
| Sag in Line            | 1         | 4%          |
| Sag in Line/Grease     | 1         | 4%          |
| <b>Grand Total</b>     | <b>24</b> | <b>100%</b> |

Table 4 Summary Mitigations from SSO Study

| 10-42, 10-48 Mitigations            | Total     | % of Total  |
|-------------------------------------|-----------|-------------|
| No Follow Up Needed                 | 4         | 17%         |
| Pretreatment Notified               | 9         | 38%         |
| Rehab/Replace                       | 3         | 13%         |
| Short Interval                      | 1         | 4%          |
| Short Interval/Special Instructions | 4         | 17%         |
| Special Instructions                | 3         | 13%         |
| <b>Grand Total</b>                  | <b>24</b> | <b>100%</b> |

Albuquerque Bernalillo County  
Water Utility Authority

9

# CMOM Annual Report

## • Actions Implemented and On-Going Programs

- FOG Policy Implementation
- Overflow Emergency Response Plan (OERP)
- Force Main Inspection Program
- Closed Circuit Television (CCTV)
- Cleaning Program Goal
- Root Foaming
- Generator Plan
- Identified Gaps in the Water Authority Processes with Recommendation to Close
  - Prohibited Discharges, i.e., SSOs
  - Formalize SSO Follow-Up Involving Administrative Assessments or Equivalent
  - E. coli Testing Processes



Water Utility  
Authority

**CAUTION**

BURIED SANITARY

SEWER PIPE

ALBUQUERQUE

BERNALILLO COUNTY

WATER UTILITY

AUTHORITY

IF PROBLEMS CALL

**842-WATR**

Albuquerque Bernalillo County  
Water Utility Authority

10



# CMOM Program Self-Assessment

EPA states: "An important component of a successful CMOM program is to periodically collect information on current systems and activities and develop a "snapshot-in-time" analysis."

The next update will coincide with the CY2018 CMOM Report.

## Conveyance & Pumping

|                                  | Gravity Sewers | Pump Stations   |             | Vacuum Stations |              |             |
|----------------------------------|----------------|-----------------|-------------|-----------------|--------------|-------------|
|                                  |                | Stations        | Force Mains | Stations        | Vacuum Lines | Force Mains |
| Pipes and pumps: Length/quantity | 2,209'         | 34              | 36.5'       | 10              | 154'         | 14.5'       |
|                                  | MILES          | NUMBER          | MILES       | NUMBER          | MILES        | MILES       |
| Age of system: 0-25 years old    | 42.4%          | 24 <sup>a</sup> | 80.8%       | 10              | 100%         | 100.0%      |
|                                  | PERCENT        | NUMBER          | PERCENT     | NUMBER          | PERCENT      | PERCENT     |
| 26-50 years old                  | 38.0%          | 9 <sup>b</sup>  | 18.8%       | N/A             | 0            | 0           |
|                                  | PERCENT        | NUMBER          | PERCENT     | NUMBER          | PERCENT      | PERCENT     |
| 51-75 years old                  | 18.9%          | 13 <sup>a</sup> | 0.4%        | N/A             | 0            | 0           |
|                                  | PERCENT        | NUMBER          | PERCENT     | NUMBER          | PERCENT      | PERCENT     |
| >75 years old                    | 0.7%           | N/A             | N/A         | N/A             | 0            | 0           |
|                                  | PERCENT        | NUMBER          | PERCENT     | NUMBER          | PERCENT      | PERCENT     |

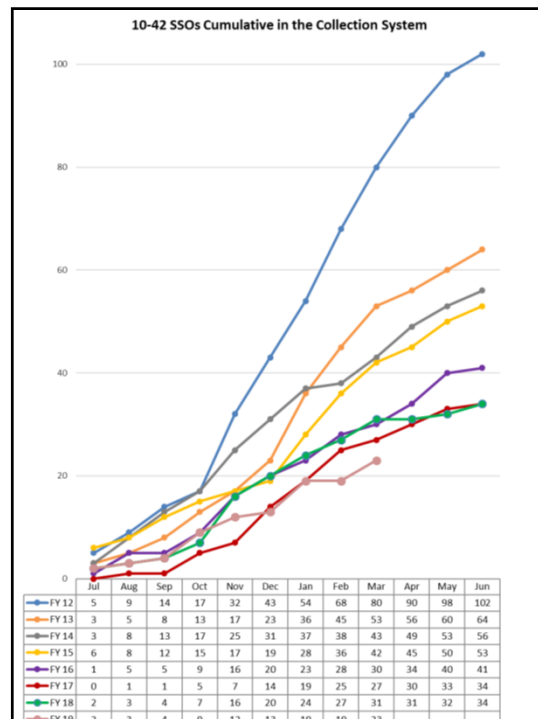
## Satellite Communities and Sewer Use Ordinance (SUO)

| Checklist Item  | Yes | No | N/A |
|---|-----|----|-----|
| <b>SUO-01</b> Does the utility receive flow from satellite communities? IF NO, GO TO NEXT SECTION   | X   |    |     |
| <b>SUO-02</b> What is the total area from satellite communities that contribute flow to the collection system? (Acres or square miles)<br>Comments: Sandia Heights = 1,912 acres; KAFB = 50,352 acres; Tierra West = 102 acres; Village of Tijeras = 20 acres<br>Total acreage = 52,386   |     |    |     |
| <b>SUO-03</b> Does the utility require satellite communities to enter into an agreement? IF NO, GO TO QUESTION SUO-06<br>Comments: Pursuant to the utility's System Expansion Ordinance, all developments or communities are required to enter into a development agreement for service.  | X   |    |     |
| <b>SUO-04</b> Does the agreement include the requirements listed in the sewer use ordinance?<br>Comments: Agreements state that the user is subject to the ordinances, policies and regulations of the Water Authority and payment of the rates and charges imposed by the Water Authority for wholesale wastewater service. Therefore, all requirements are in current ordinances. | X   |    |     |

<http://www.epa.gov/npdes/pubs/cmomselfreview.pdf>

Albuquerque Bernalillo County  
Water Utility Authority

11



## How is the CMOM Program doing so far?

Albuquerque Bernalillo County  
Water Utility Authority

12

# What about the future?

Focus on Capture & Prevent



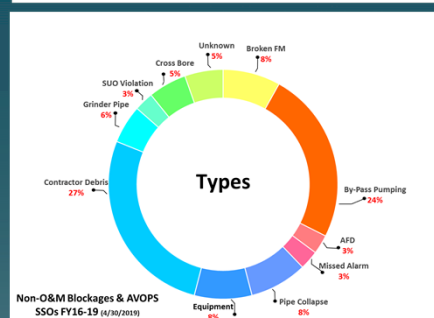
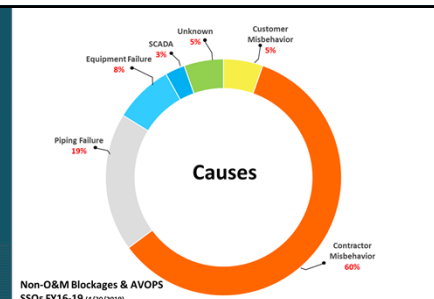
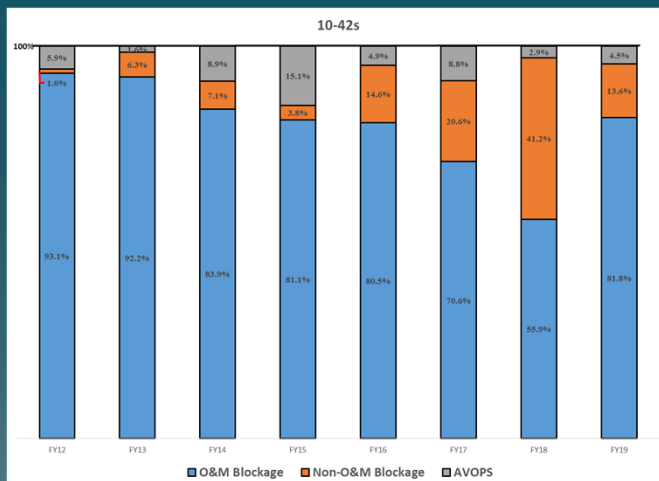
Albuquerque Bernalillo County  
Water Utility Authority

13

# What about the future?

## • Attention to Contractors

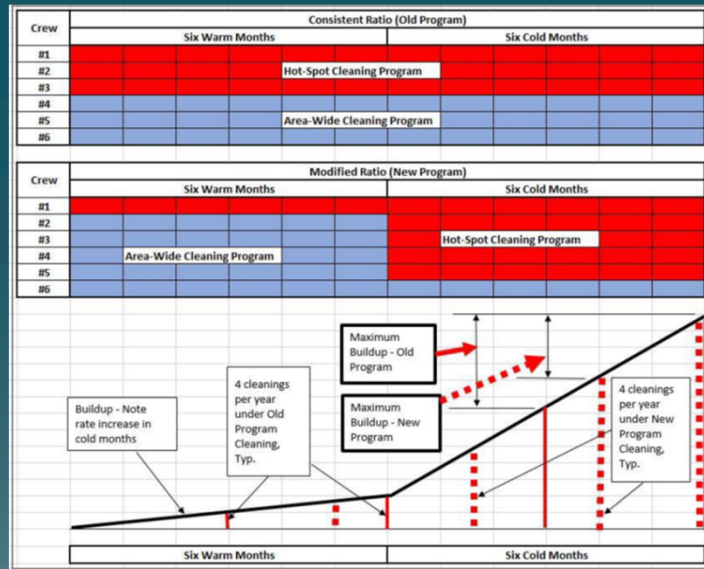
- Invoices
- Pre Cons



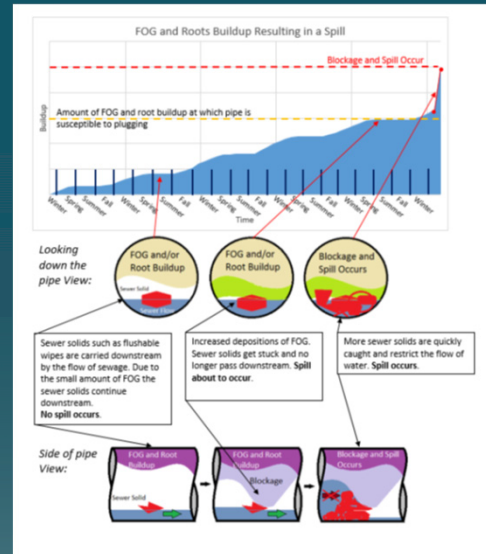
Albuquerque Bernalillo County  
Water Utility Authority

14

## What about the future?



### Seasonal Cleaning

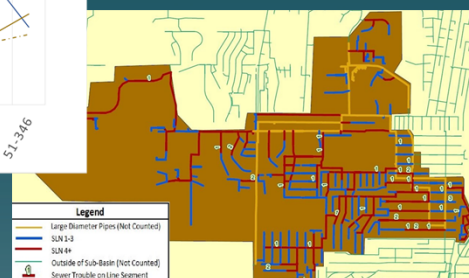
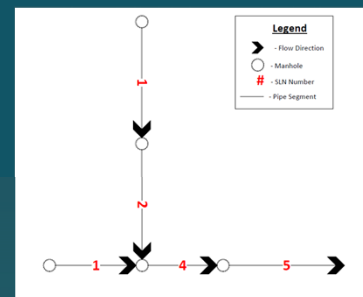
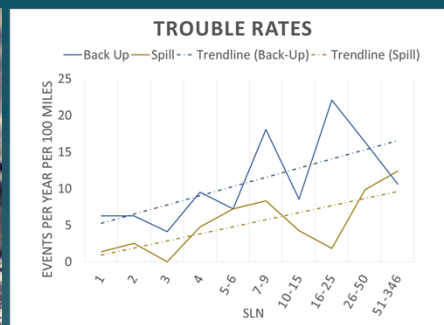
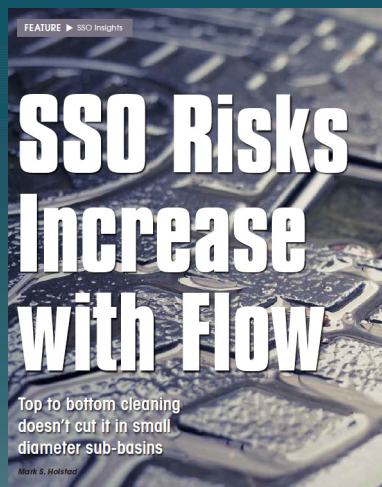


Albuquerque Bernalillo County  
Water Utility Authority

15

## What about the future?

### Utilize Segment Loading Number

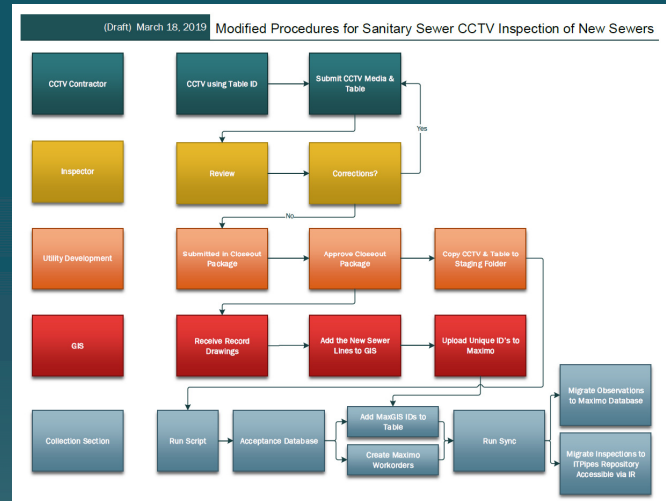
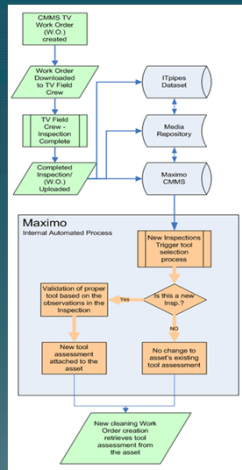


Albuquerque Bernalillo County  
Water Utility Authority

16

# What about the future?

## • Development CCTV



 Albuquerque Bernalillo County  
Water Utility Authority

17

# Questions



 Water Utility Authority

18