

# Update on Laun-Dry Supply Co. Stage 2 Abatement



Prepared for:

**Albuquerque Bernalillo County  
Water Utility Authority**



**Laun-Dry Supply Company Stage 2 Abatement Update**



# Permeable Reactive Barrier

- 200-Feet long in Eighth Street
- Delineated width and plume thickness prior to installation
- Injected from 20 feet below grade to 50 feet to cover plume thickness and allow for water table rise
- Injected Regenesis PlumeStop™ and Aqua ZVI™
- Installed performance assessment wells downgradient to monitor contaminant decline



# Permeable Reactive Barrier

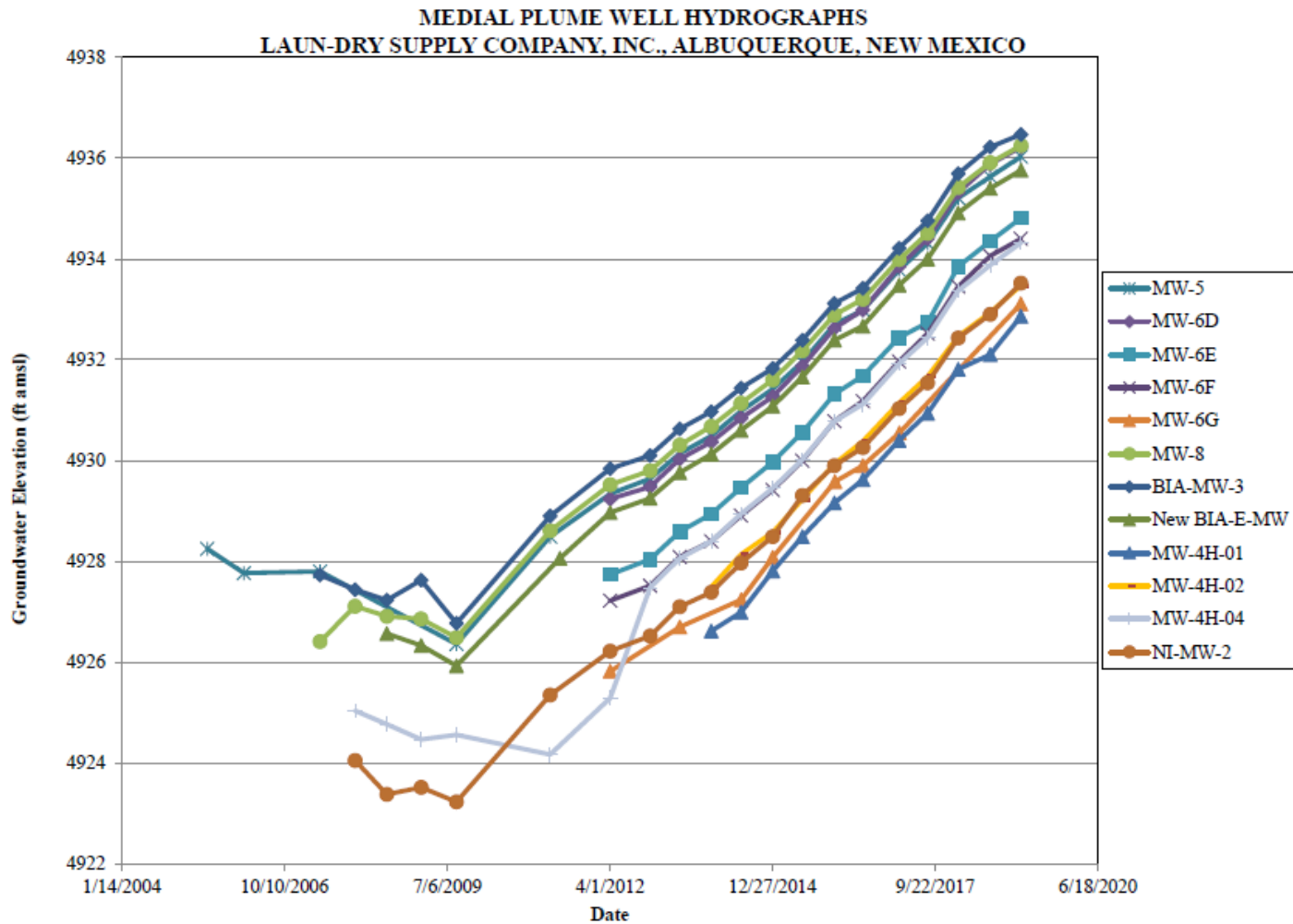
2



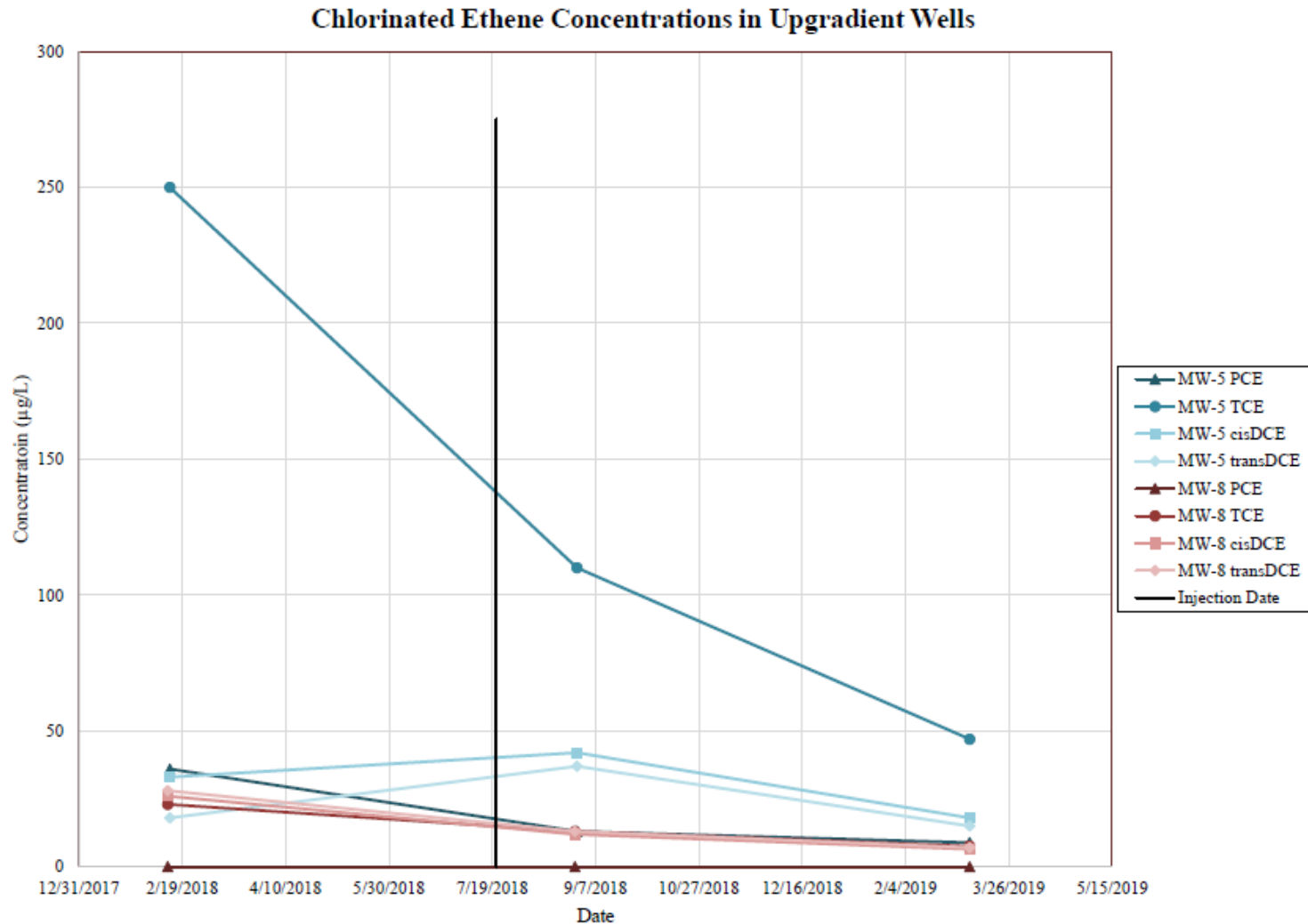
Laun-Dry Supply Company Stage 2 Abatement Update



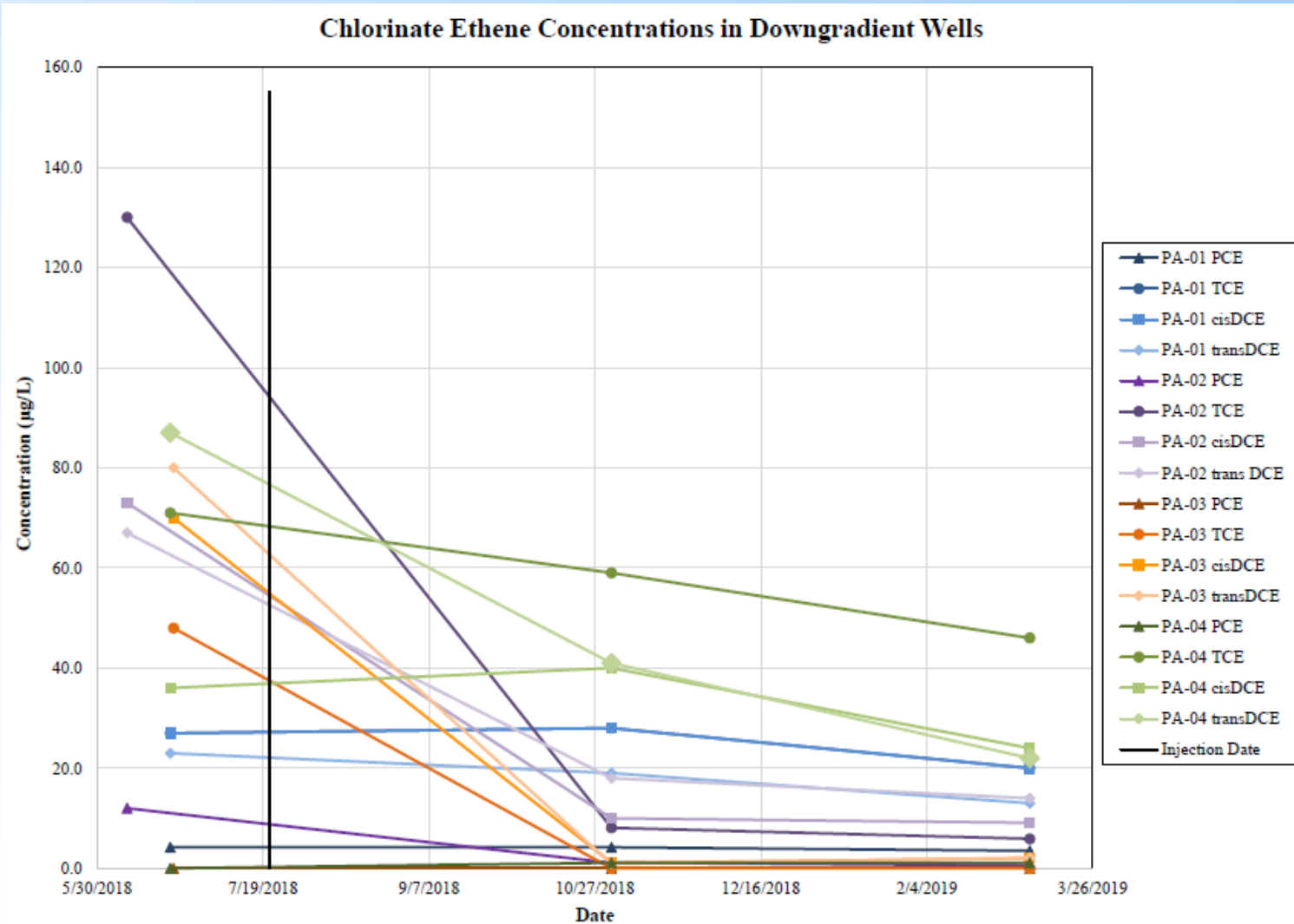
# Groundwater Trends



# Upgradient Contaminant Trends



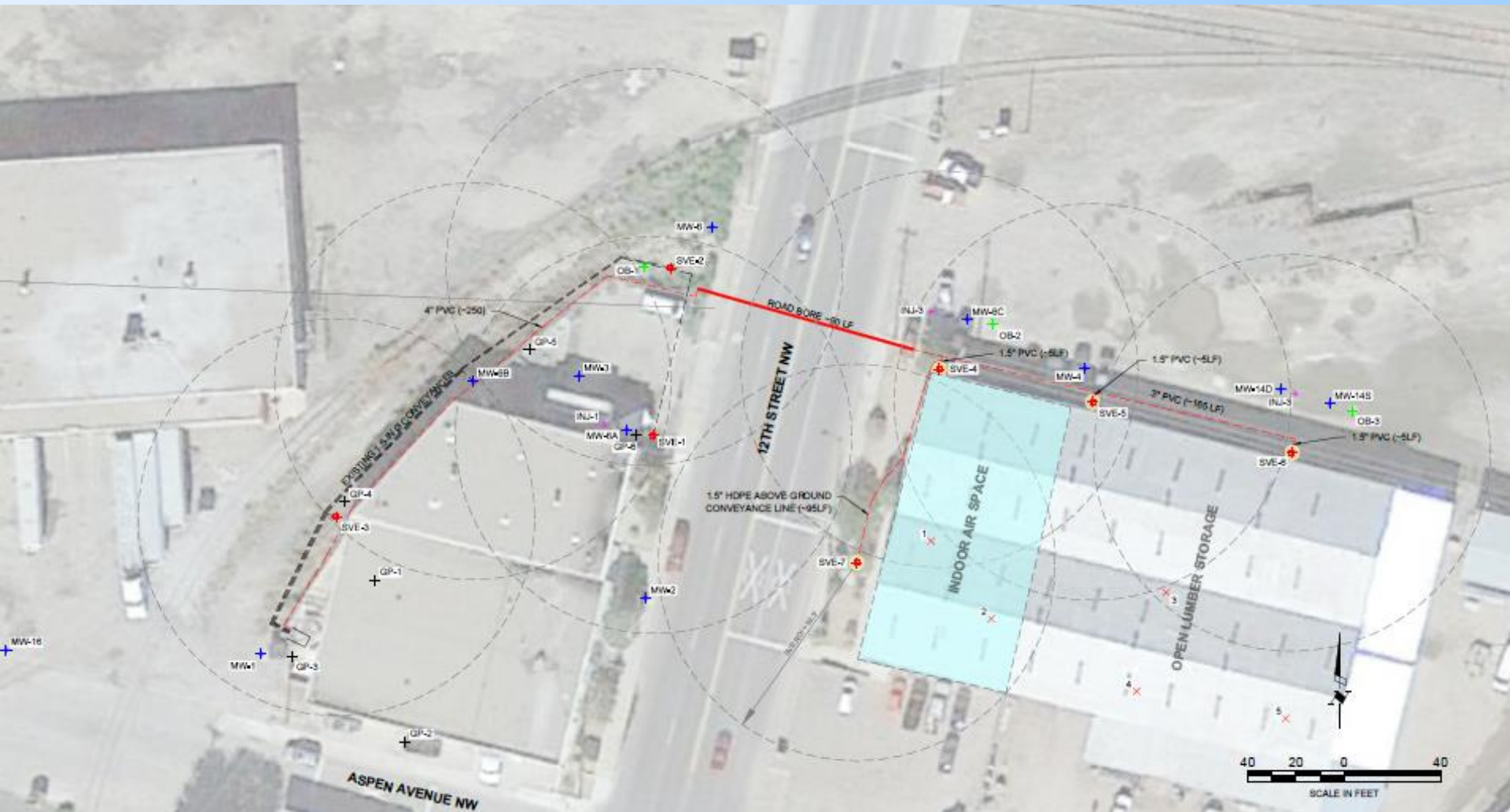
# Downgradient Contaminant Trends





# Soil Vapor Extraction System

6

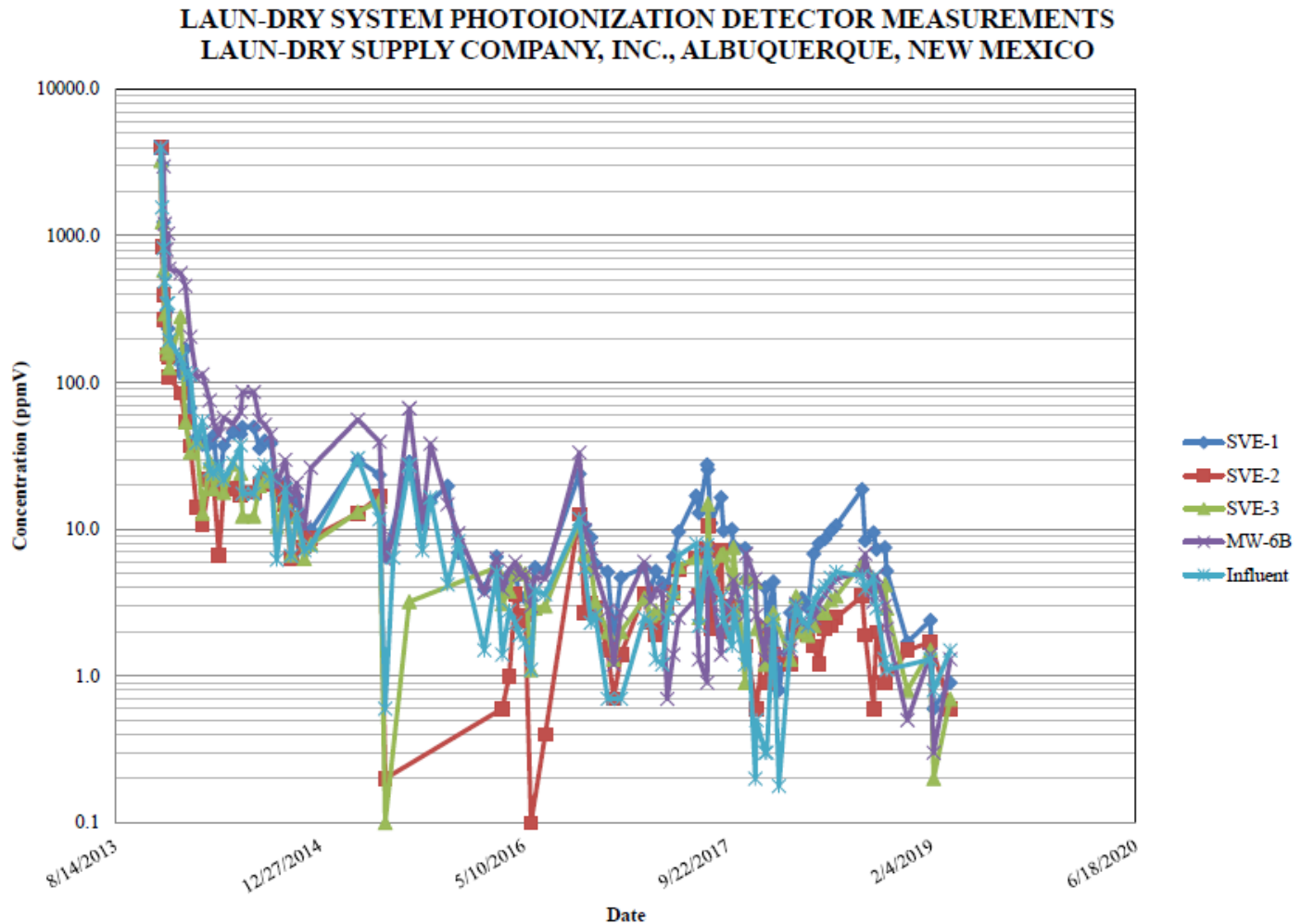


Laun-Dry Supply Company Stage 2 Abatement Update



# Soil Vapor Extraction Performance

7



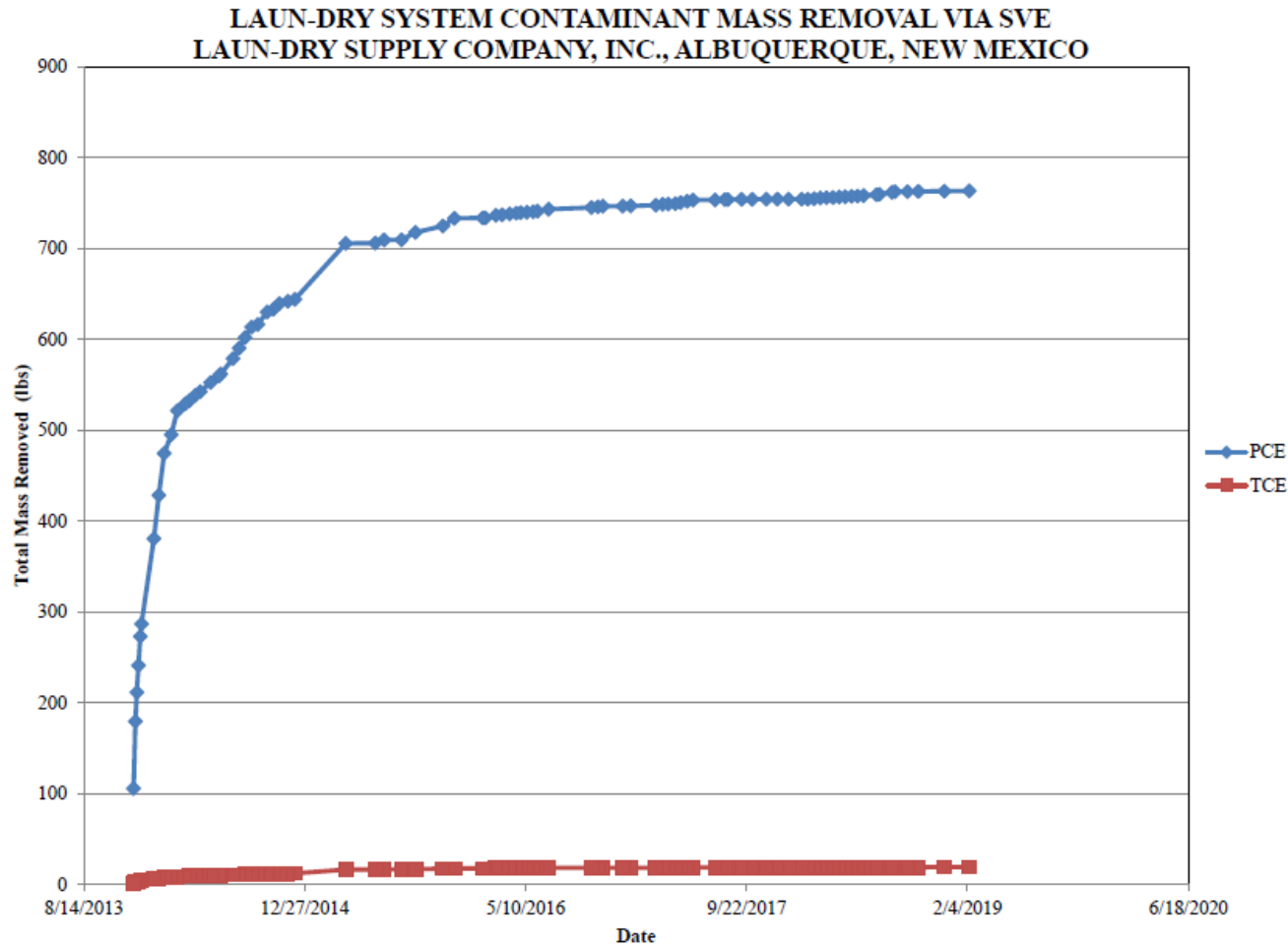
Laun-Dry Supply Company Stage 2 Abatement Update





# Soil Vapor Extraction Performance

8

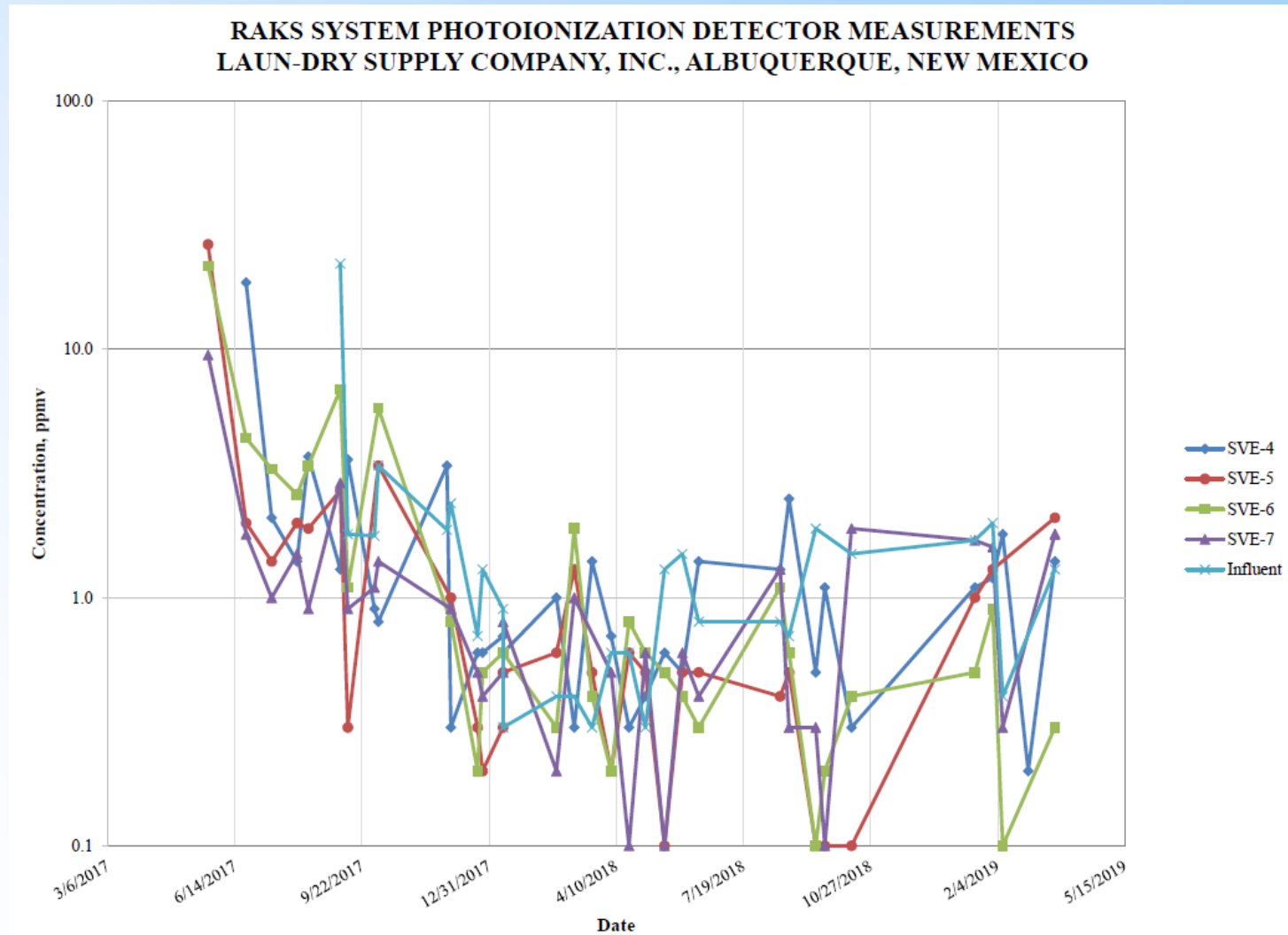


Laun-Dry Supply Company Stage 2 Abatement Update



# Soil Vapor Extraction Performance

9

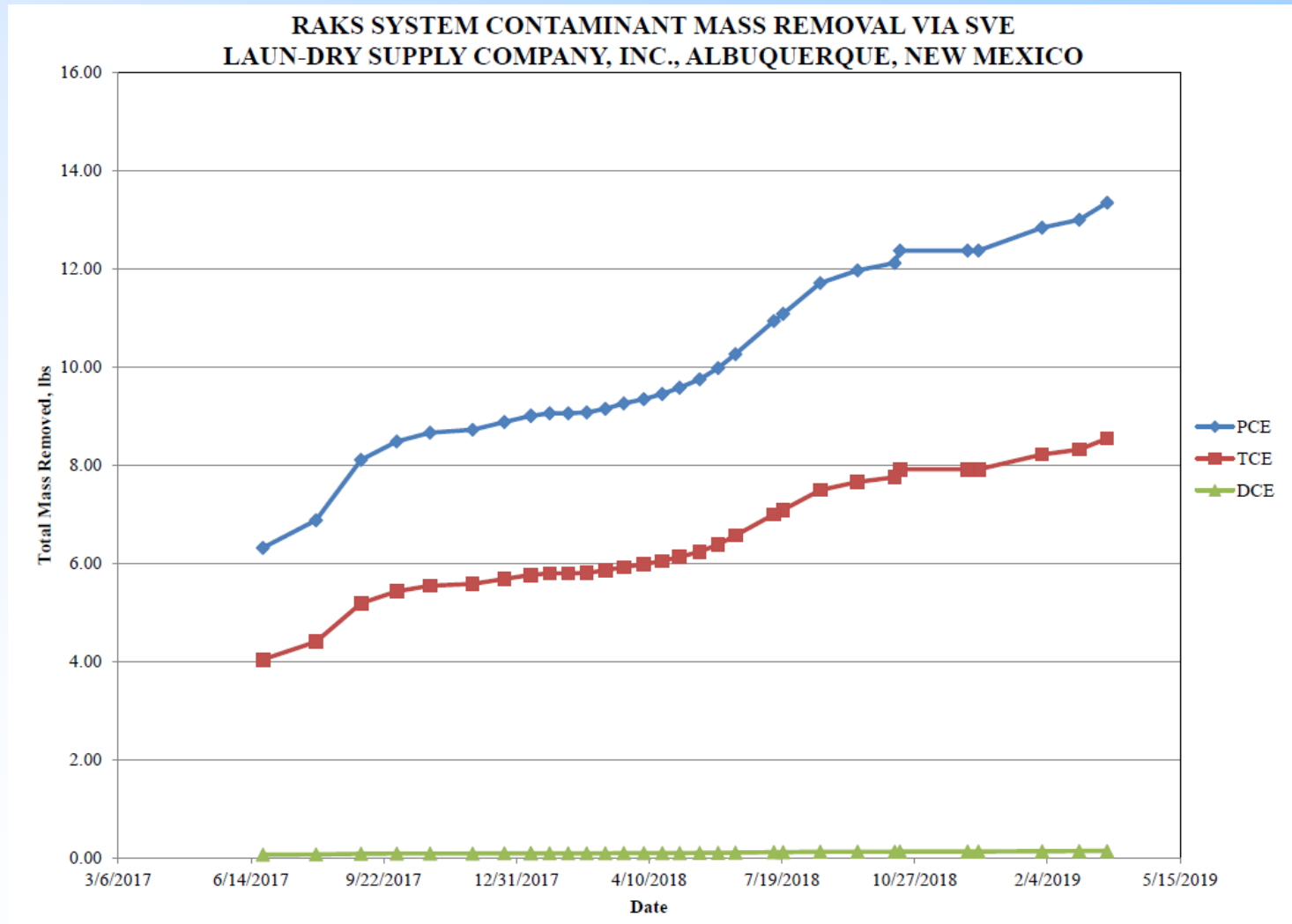


Laun-Dry Supply Company Stage 2 Abatement Update



# Soil Vapor Extraction Performance

10



**Laun-Dry Supply Company Stage 2 Abatement Update**

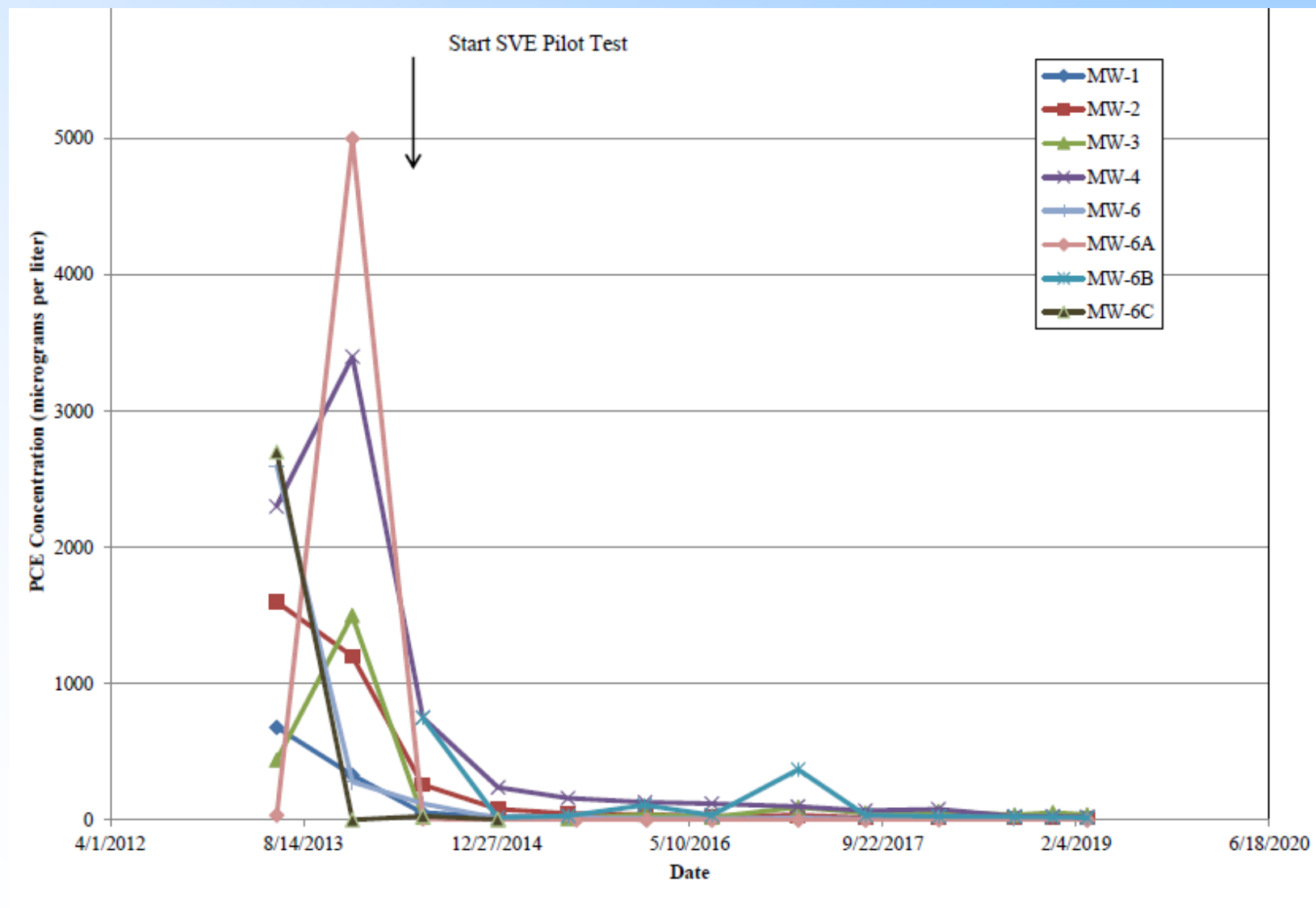


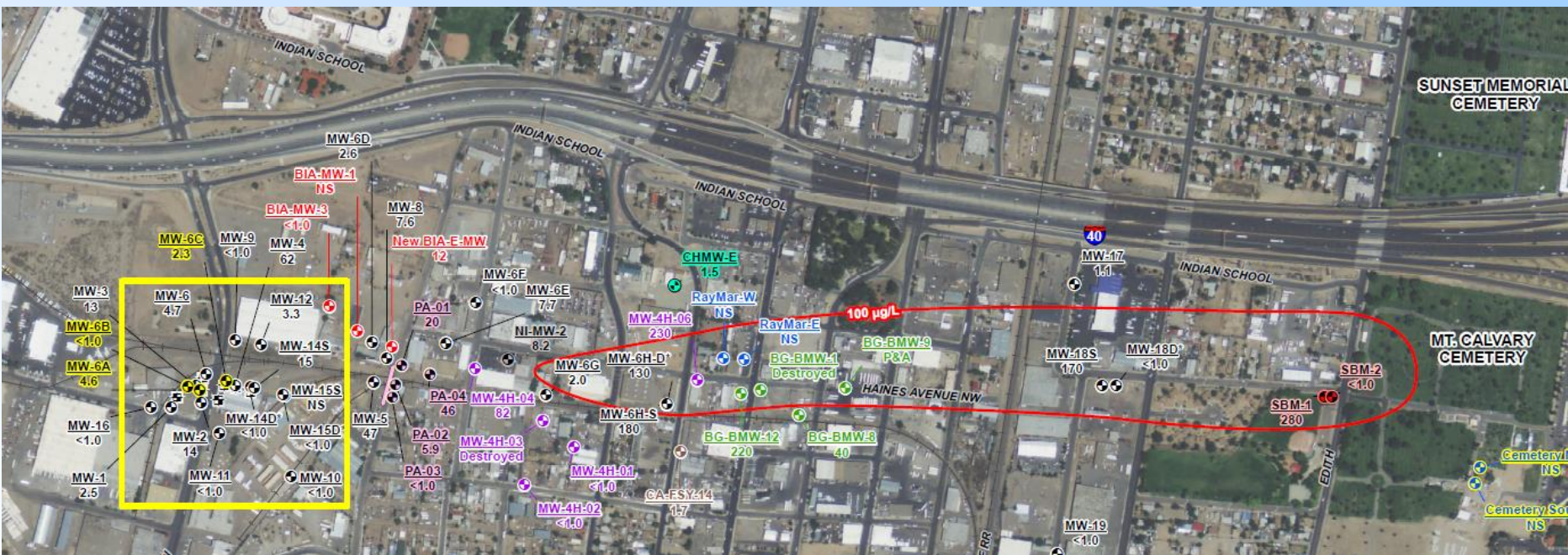


## Tetrachloroethene Plume



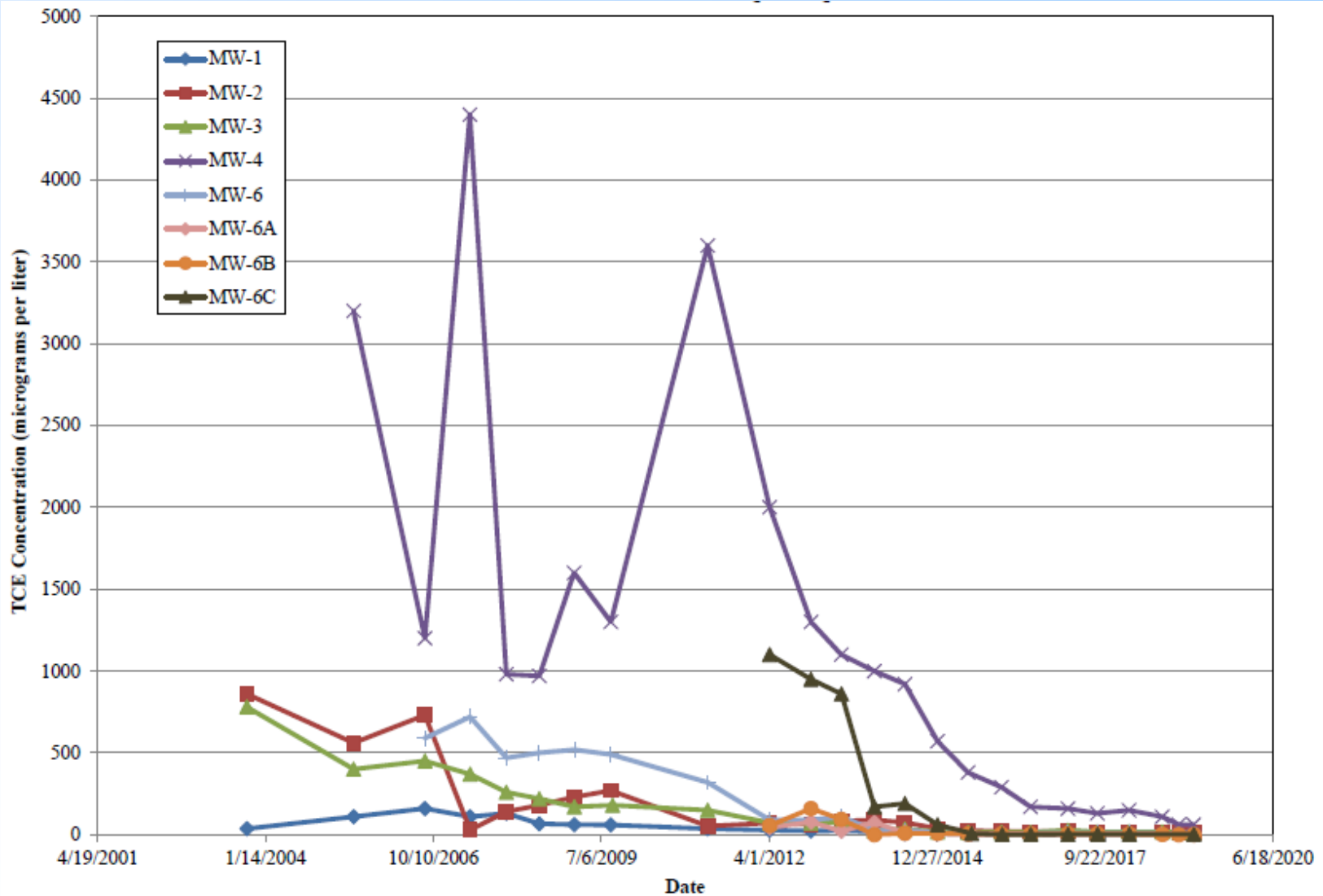
# Source Area Tetrachloroethene Trends



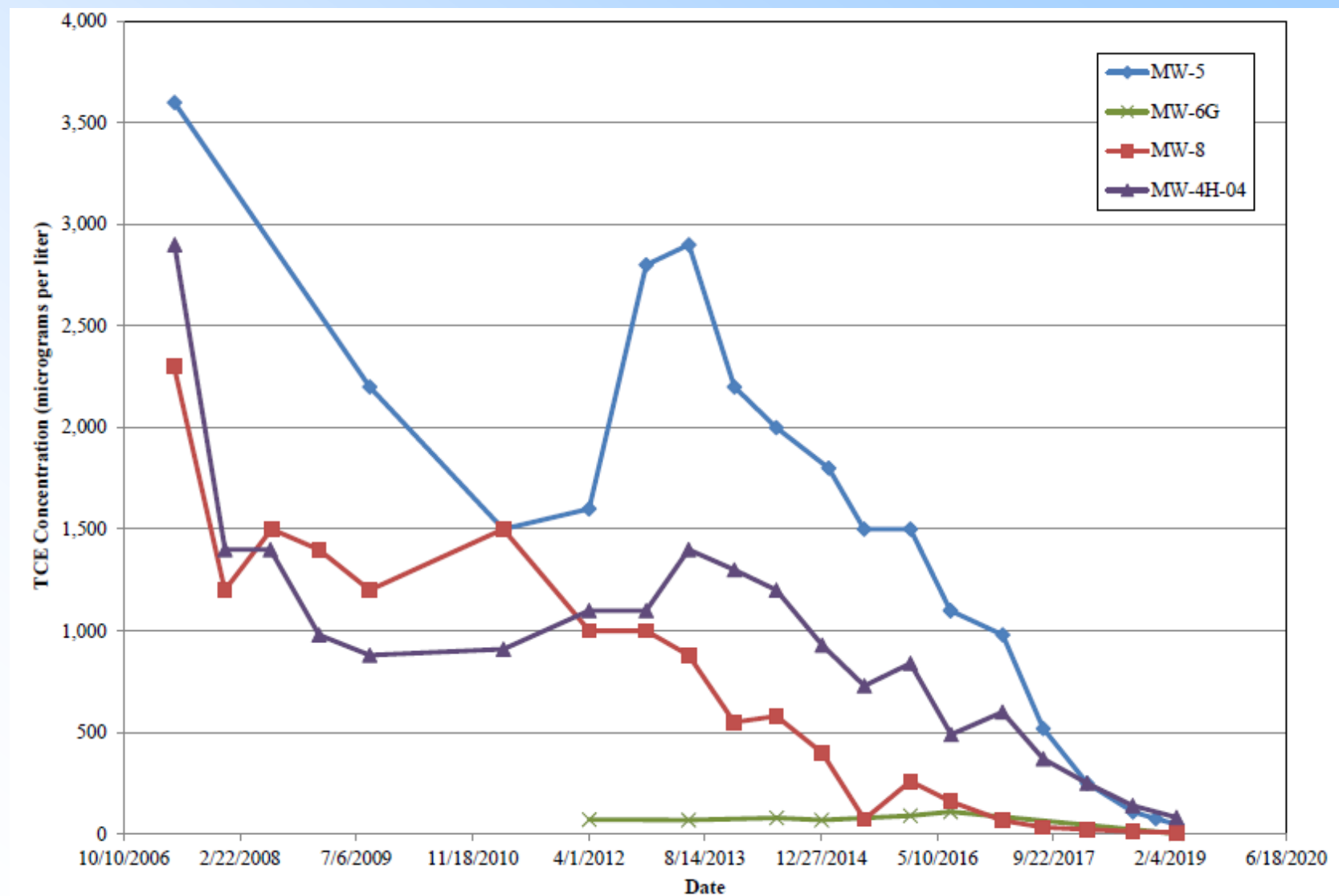


## Trichloroethene Plume

# Near Source Area Trichloroethene Trends

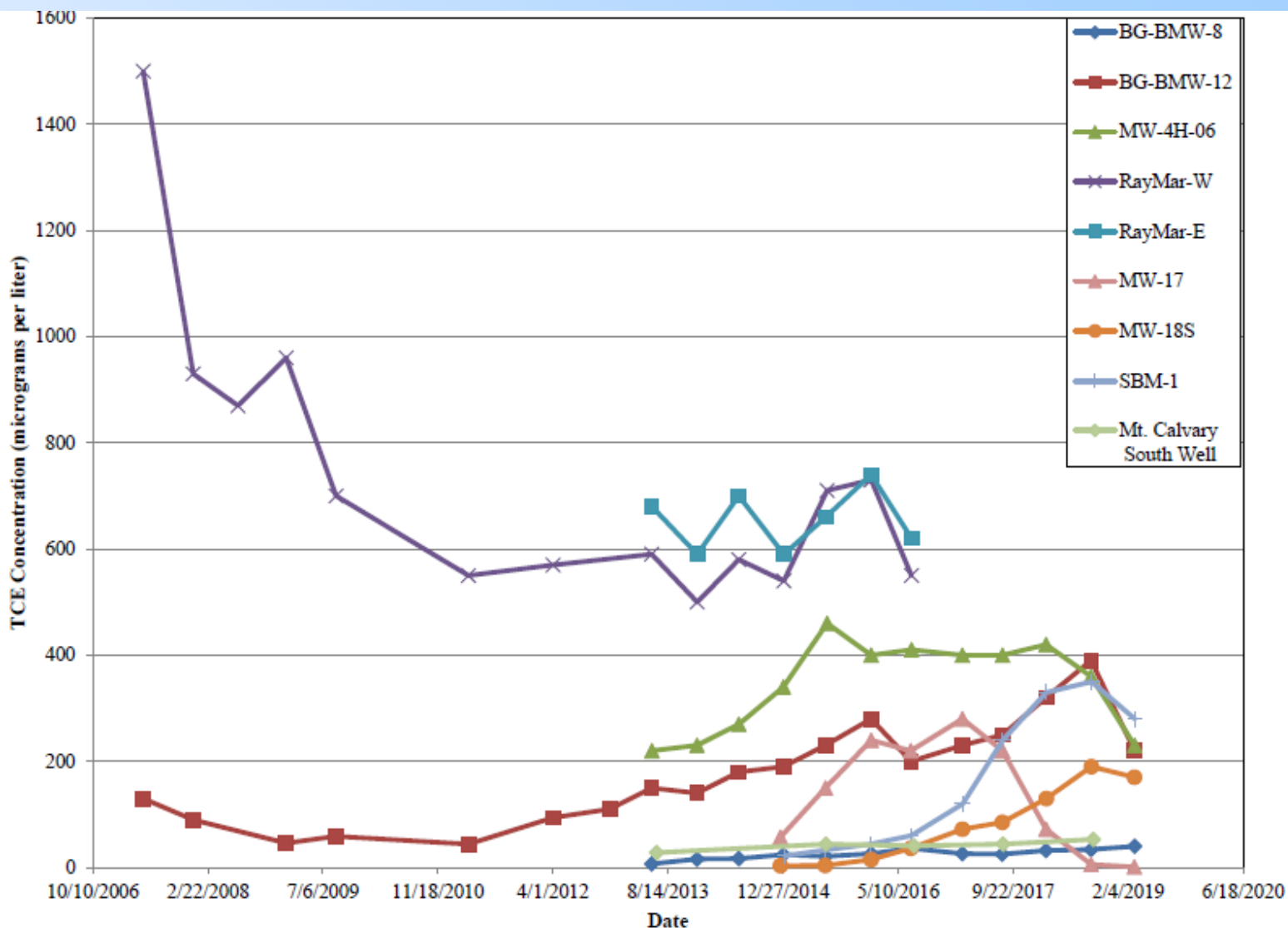


# Medial Plume Trichloroethene Trends





# Distal Plume Trichloroethene Trends





## Trichloroethene Plume

# Questions?