
Meeting Date: May 22, 2019
Staff Contact: Stan Allred, Chief Financial Officer

TITLE: C-19-19 – FY2019 3rd Quarter Operating Financial Reports

ACTION: Receipt be Noted

SUMMARY:

Submitted to the Board for review and informational purposes are the financial reports for the quarter ended March 31, 2019. The reports provide a year to date comparison between the approved FY19 budget and actual expenses through March 31, 2019. The reports also include revenue and expense projections to June 30, 2019. The projections are based on actual, trend, and historical information. As with any estimates, this information is subject to change. These reports have been reviewed and approved by the State Department of Finance and Administration Local Government Division.

Fund 21 General Operating Fund

Revenues:

Third Quarter rate revenues are \$2.6 million below the actuals for the same period in FY18. The FY19 rate revenues are below the FY18 revenues due to a decrease in water consumption during this time period. Revenues are projected be at the FY19 projected budgeted amount. This projection is based upon 9 months of actual consumption and is subject to change.

Third Quarter other revenue, which includes miscellaneous revenue, is \$1.7 million more than the actuals for the same period in FY18. Approved budget revenues amounts were derived with the expectation of very limited growth in the service area for the next several years coupled with a GCPD level of 128.

Expenses:

Third Quarter total expenses are \$0.4 million less than the actuals for the same period in FY18. The projected total expense at June 30, 2019 is estimated to be \$0.2 million under the FY19 budgeted amount.

Working capital or fund balance is projected to be \$52.1 million, compared to a beginning balance in FY19 of \$41.2 million. The Rate Reserve balance for FY19 is \$9.0 million. The fund balance trend has reversed as planned and will meet the target of 1/12 of operating expenses.

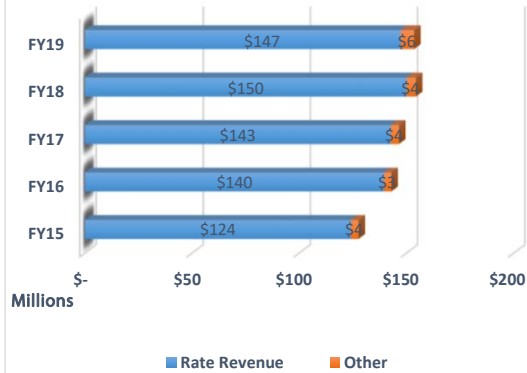
FISCAL IMPACT:

The reduction in consumption is a positive result for conservation goals, however, the costs of maintaining the utility are primarily fixed in nature and the revenue requirements for operating, debt service payments, reserves, and debt service coverage must be met. Consumption levels will continue to be monitored to ensure proper revenue levels are achieved.

The Water Authority will continue to control operating expenses to offset any reductions in revenue. The balance for the Rate Reserve is now at \$9.0 million and earmarked for fluctuations in revenue which are not anticipated and to protect ratepayers from emergency rate adjustments.

FY19 - 3rd Quarter Water Authority Financial Dashboard

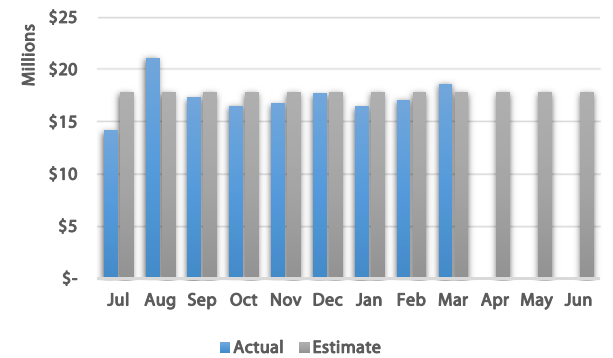
Year-To-Date Operating Revenues



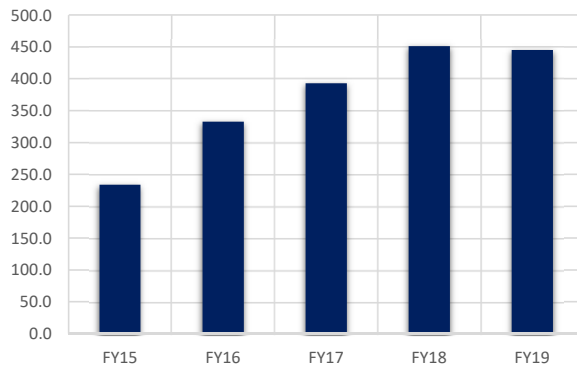
Year-To-Date Operating Expenses



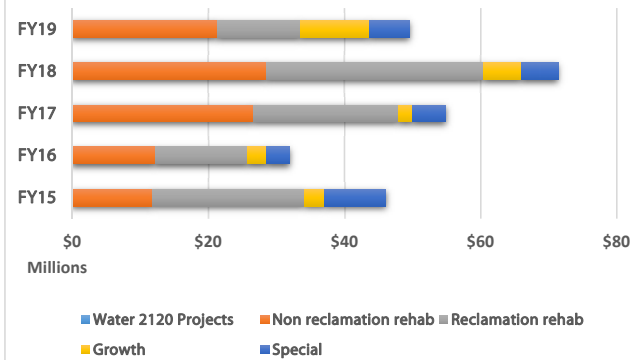
Operating Expenditures by month Compared to Estimate



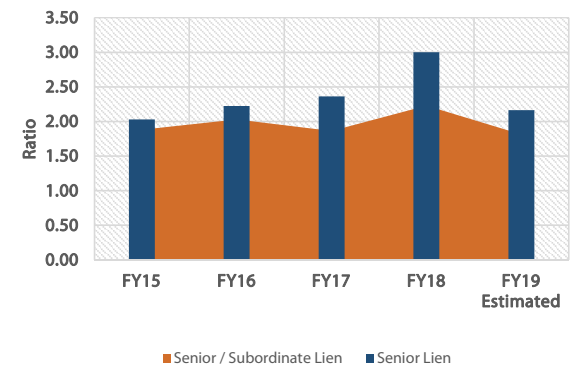
Days Cash on Hand



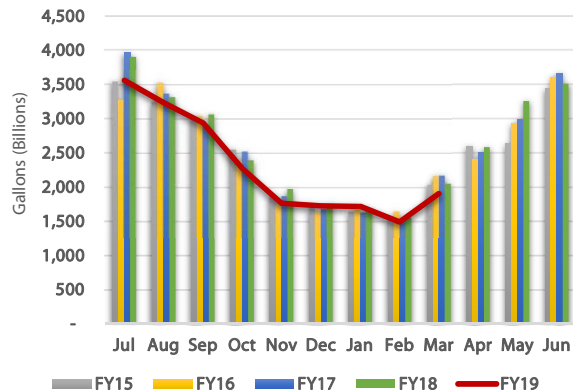
Year-To-Date Capital Expenses



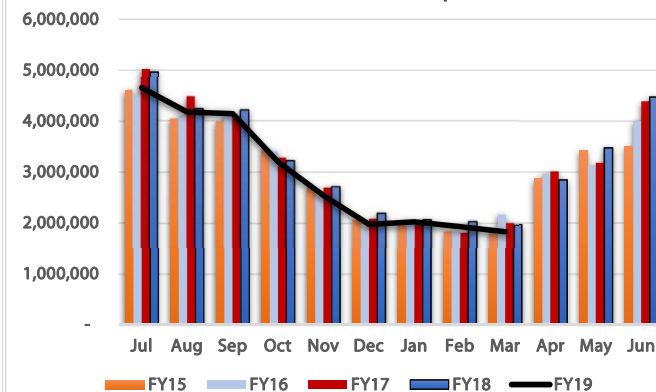
Debt Coverage Ratio



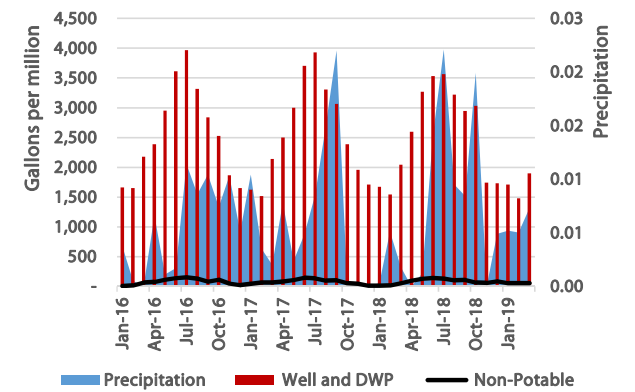
Water Use Production



Water Consumption



Precipitation vs Production



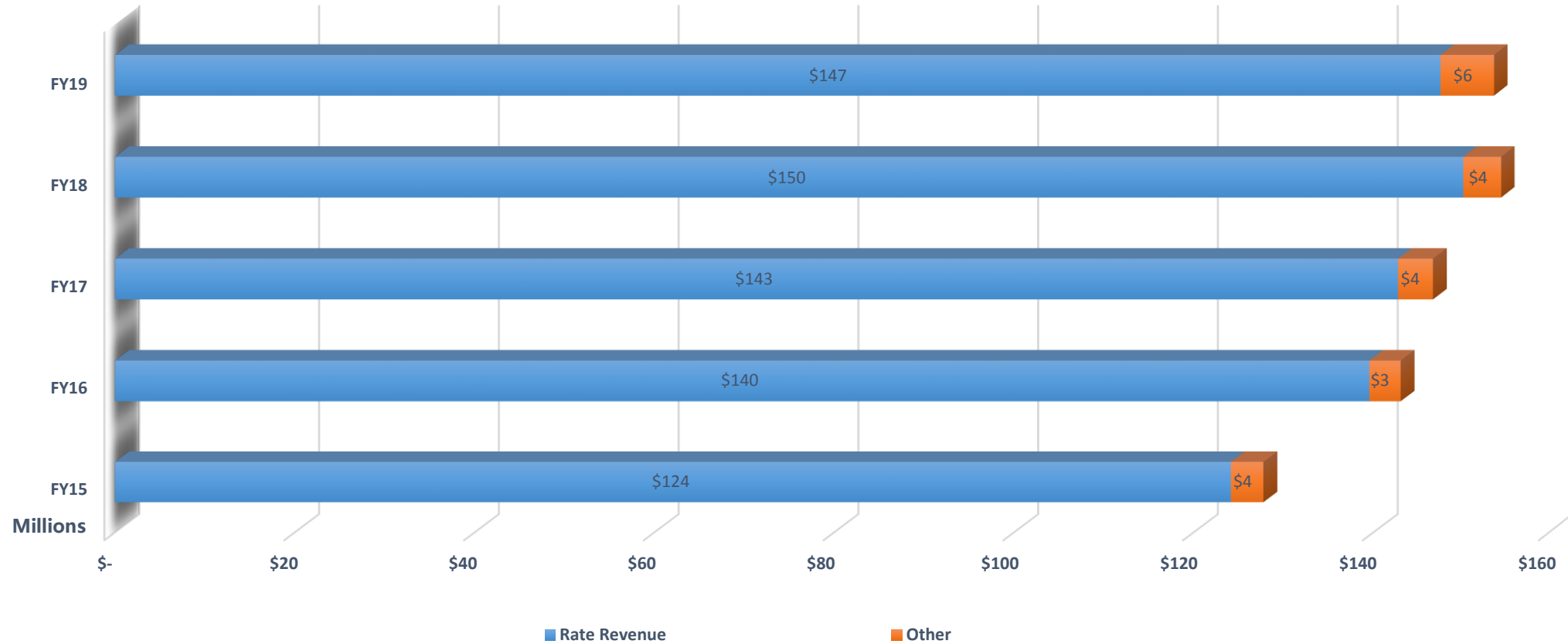
Fiscal Year 2019

3rd Quarter Dashboard



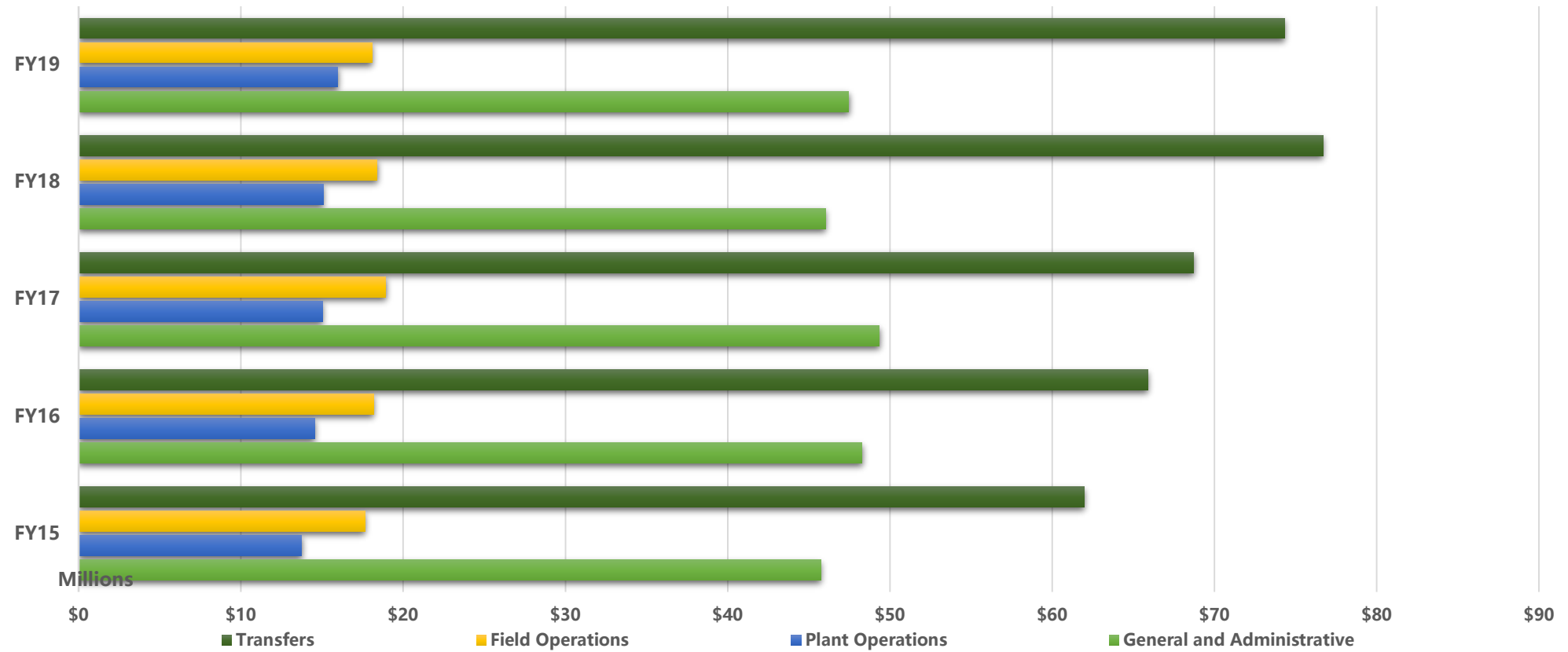
Albuquerque Bernalillo County
Water Utility Authority

Year-To-Date Operating Revenues



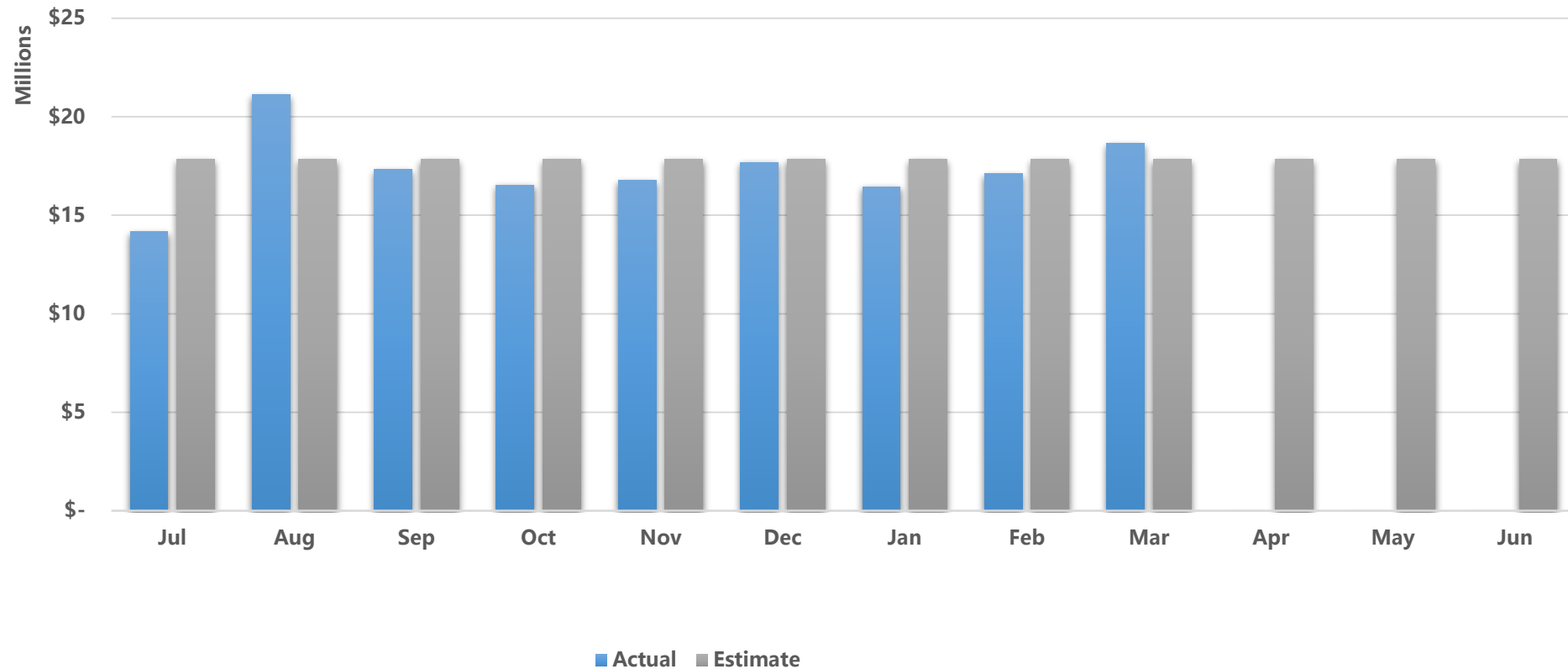
Albuquerque Bernalillo County
Water Utility Authority

Year-To-Date Operating Expenses



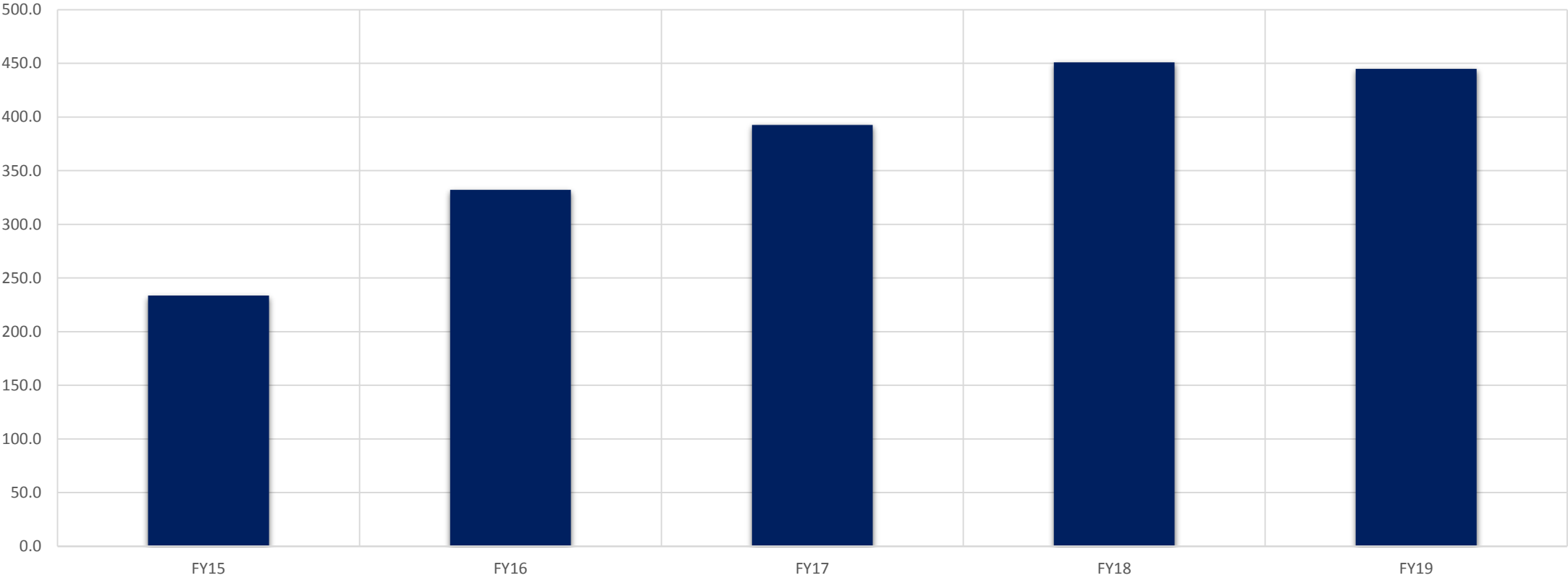
Albuquerque Bernalillo County
Water Utility Authority

Operating Expenditures by month Compared to Estimate



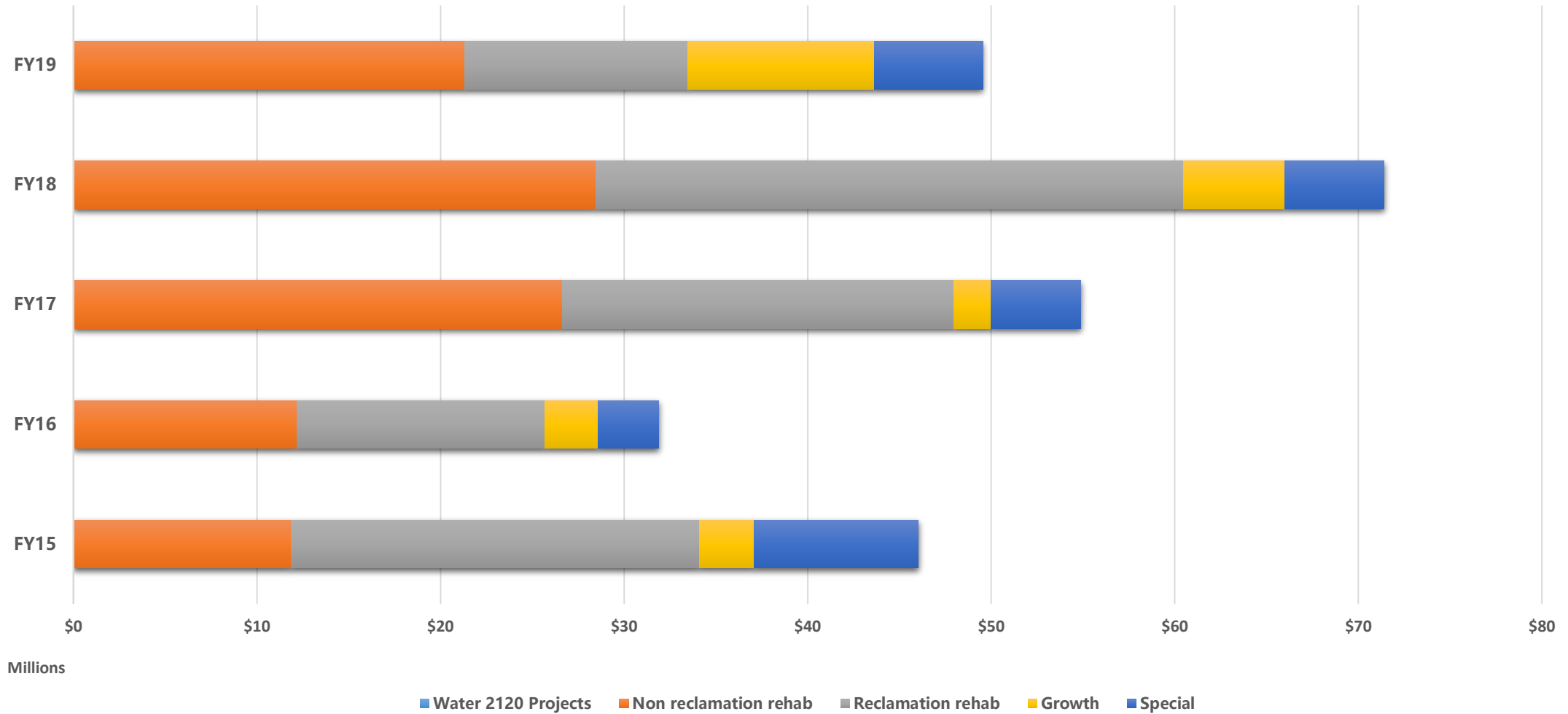
Albuquerque Bernalillo County
Water Utility Authority

Days Cash on Hand



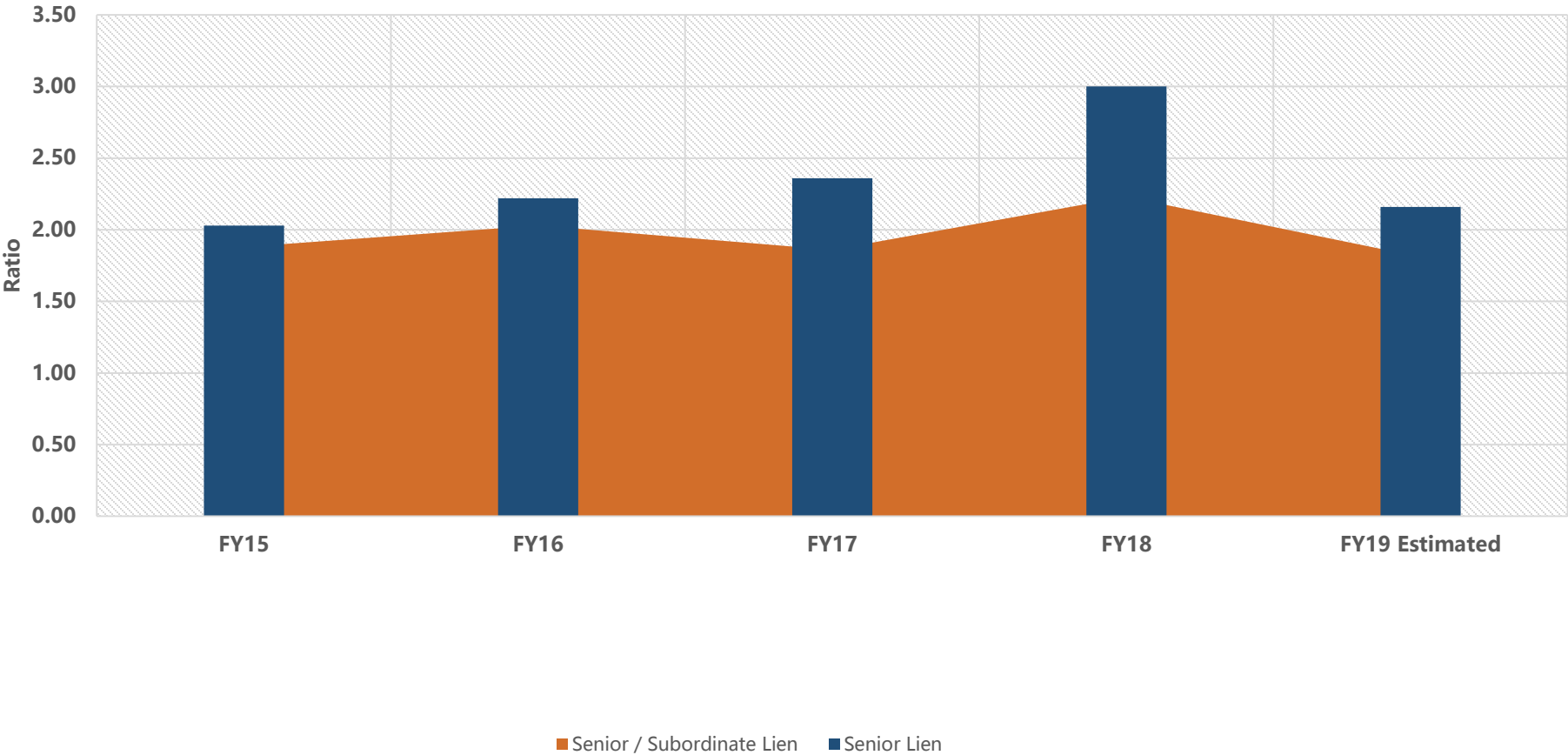
Albuquerque Bernalillo County
Water Utility Authority

Year-To-Date Capital Expenses

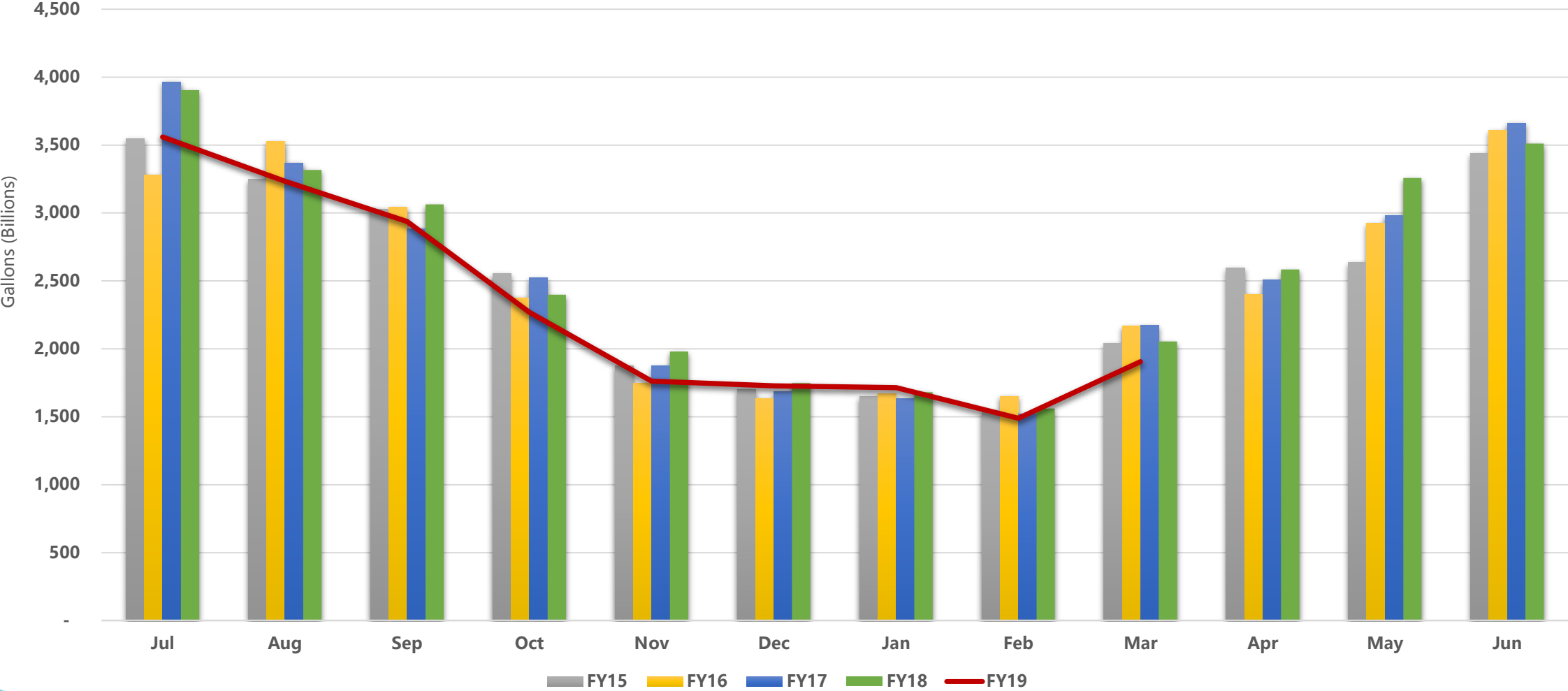


Albuquerque Bernalillo County
Water Utility Authority

Debt Coverage Ratio

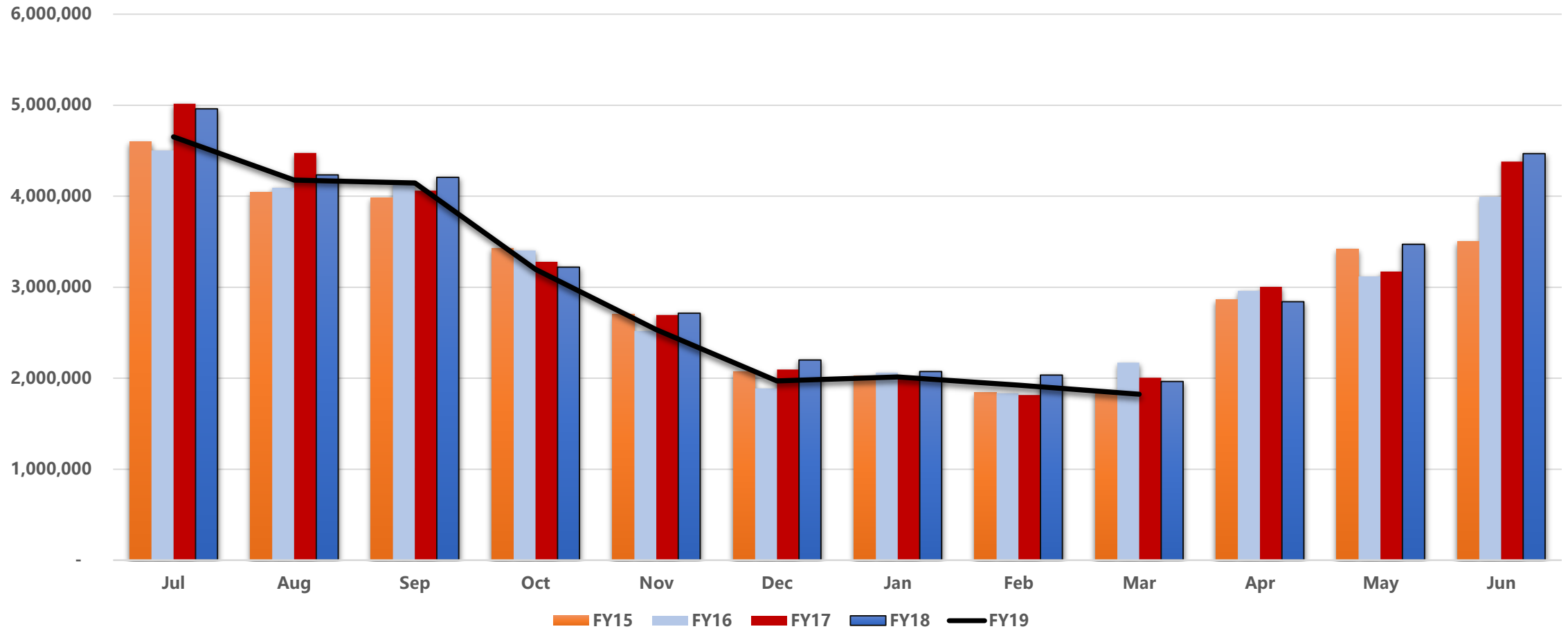


Water Use Production



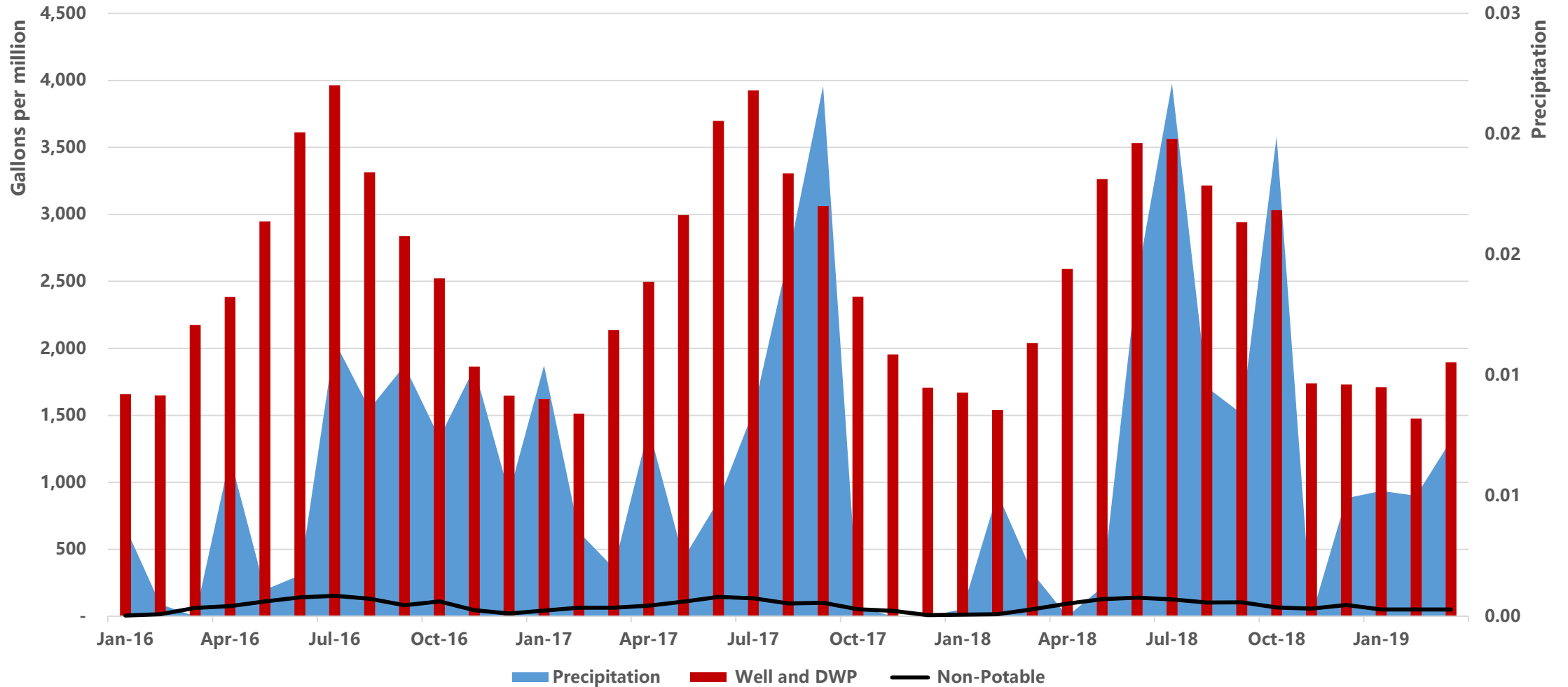
Albuquerque Bernalillo County
Water Utility Authority

Water Consumption



Albuquerque Bernalillo County
Water Utility Authority

Precipitation vs Production



Albuquerque Bernalillo County
Water Utility Authority