
Meeting Date: May 22, 2019
Staff Contact: Rick Shean, Water Rights Program Manager

TITLE: OB-19-11 – 2019 Annual Operations Plan

SUMMARY:

Water Authority staff are prepared for a higher than average runoff and projected better than average monsoon season this water year. Surface water flows should allow the Water Authority to provide around 70 percent of its service area demand with San Juan-Chama (SJC) water between April 2019 and March 2020. Staff expects to be able to divert SJC to the DWP all year long, barring any unseen events and or short-term maintenance activities. Demand not met by surface water will be served with groundwater. The Water Authority also plans to operate its Large-Scale Aquifer Storage and Recovery project later this year. The amount of SJC to be stored during the AOP will be dependent on the timing and conditions of a permit from the OSE and NMED.

In addition to scheduling releases of its SJC water for DWP operations, the Water Authority will coordinate its SJC water releases to augment flows for recreational rafting on the Rio Chama. In drier years, the Water Authority adjusts operations to participate in a “spring pulse” to help with silvery minnow spawning. Due to the higher than average flows, flow enhancements are not expected to be needed this year. Water resource management strategy efforts were set forth in Water 2120 that anticipated years where the service area would experience high surface water flows, ensuring that the Water Authority could meet its customers demand with its diversified water resources portfolio.

FISCAL IMPACT:

None.

Annual Operating Plan for the Drinking Water Plant April 2019 – March 2020

Rick Shean, Water Rights Program Manager
Albuquerque Bernalillo County Water Utility Authority

May 22, 2019



Albuquerque Bernalillo County
Water Utility Authority



Purpose of AOP

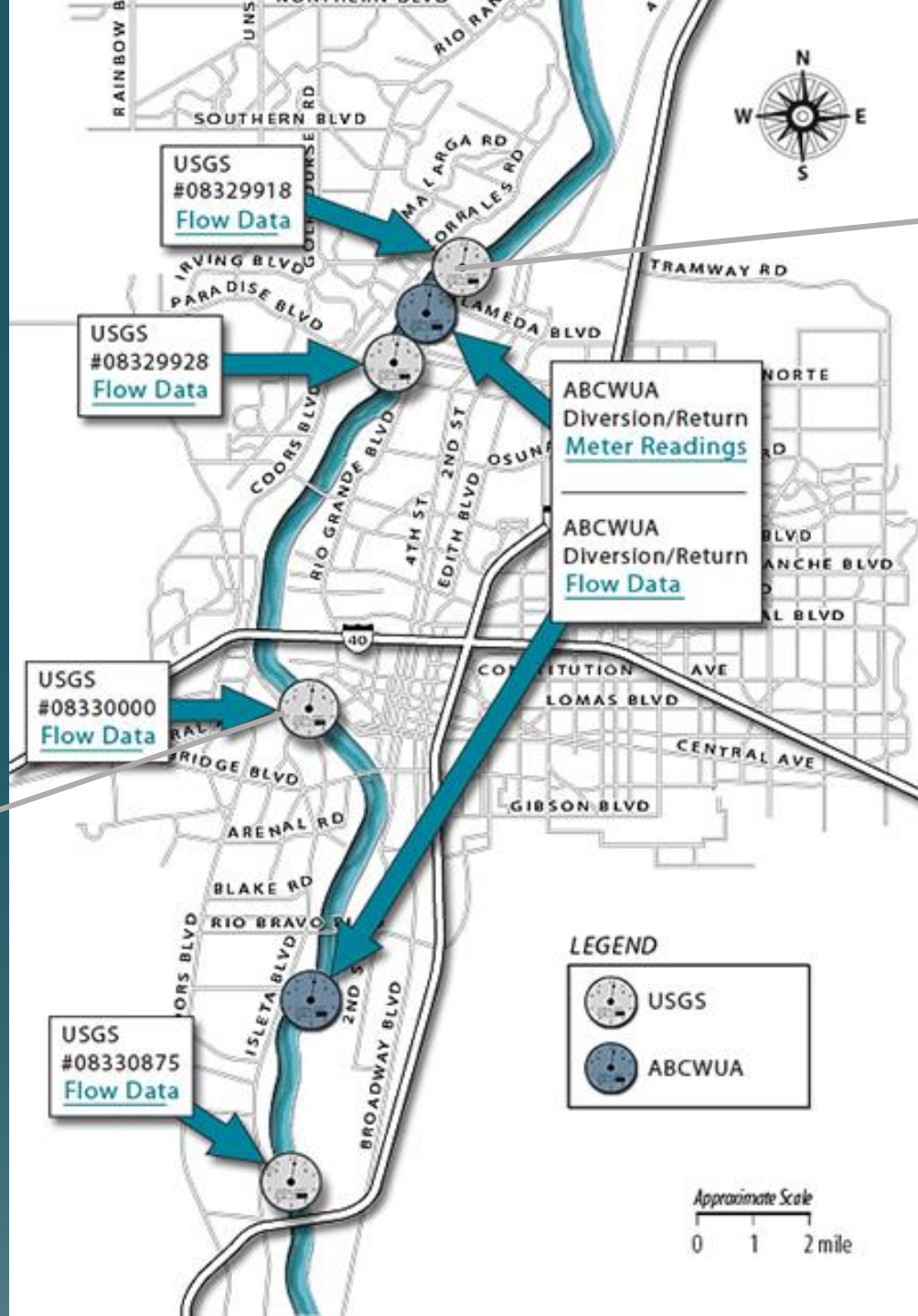
Satisfy Conditions of the Water Authority's 2004 Biological Opinion for the Drinking Water Project.

- Provide \$165,000/year to Aquatic Conservation Facility at the Albuquerque BioPark
- Continue to participate in the MRGESCP (Collaborative Program)
- Participate in fish monitoring and habitat surveys
- Contribute to research to increase understanding of species
- Last year's lease to Bureau of Reclamation increased

DWP Operations and Constraints

Office of the State Engineer Permit No. SP-4830
Flow Conditions

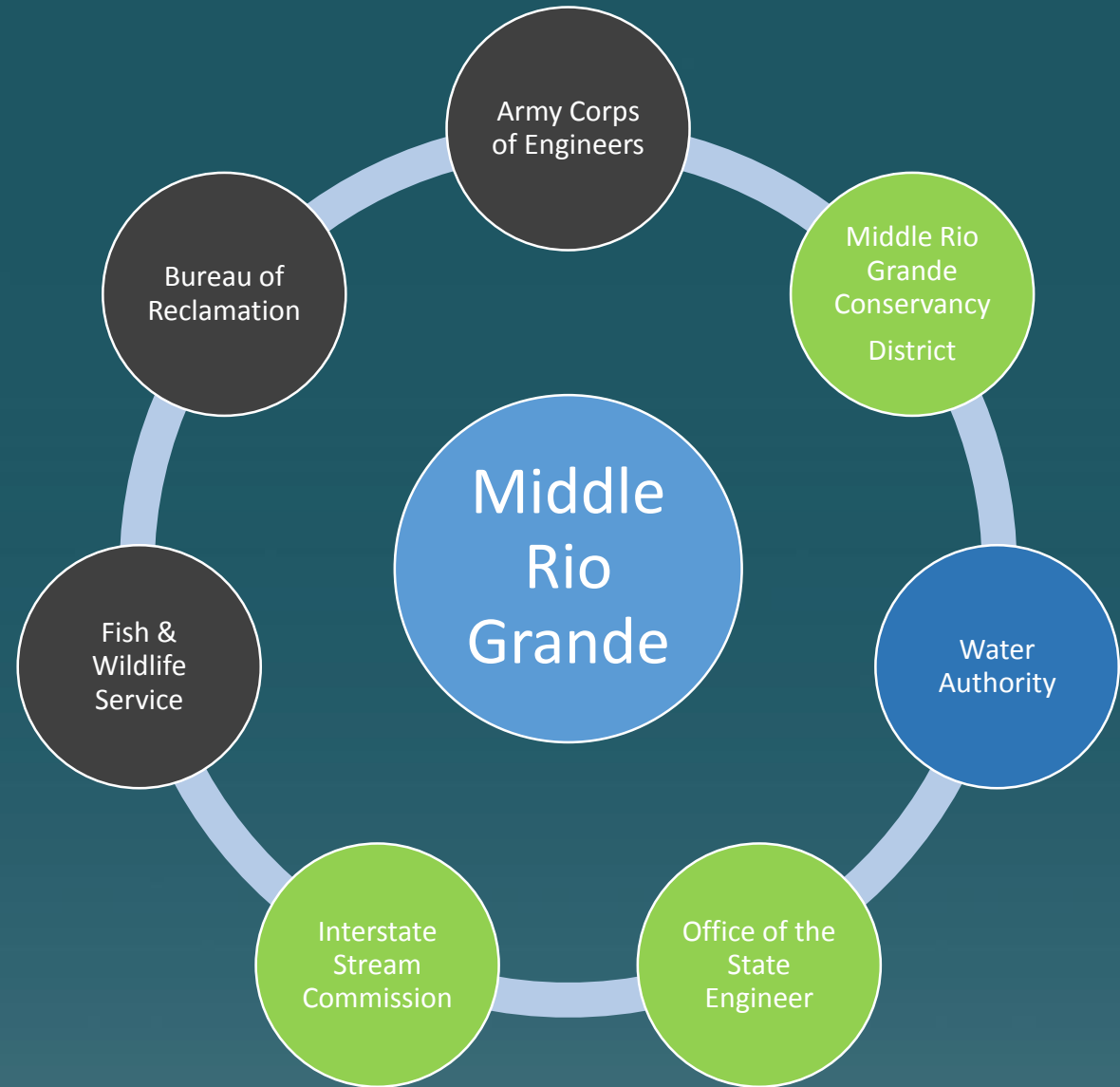
122 cfs



195 cfs

Coordination

- Up to three conference calls per week to coordinate releases
- Federal/State Agencies Meetings
- Flood Operations Coordination



2019 – 20 Runoff Forecast

- Well over average spring runoff flows and robust monsoon expected.
- Flows at Central gage projected to get to around 300 cfs at lowest flows.
- Diversion may run for the full water year.
- Natural flows sufficient for minnow spawning.

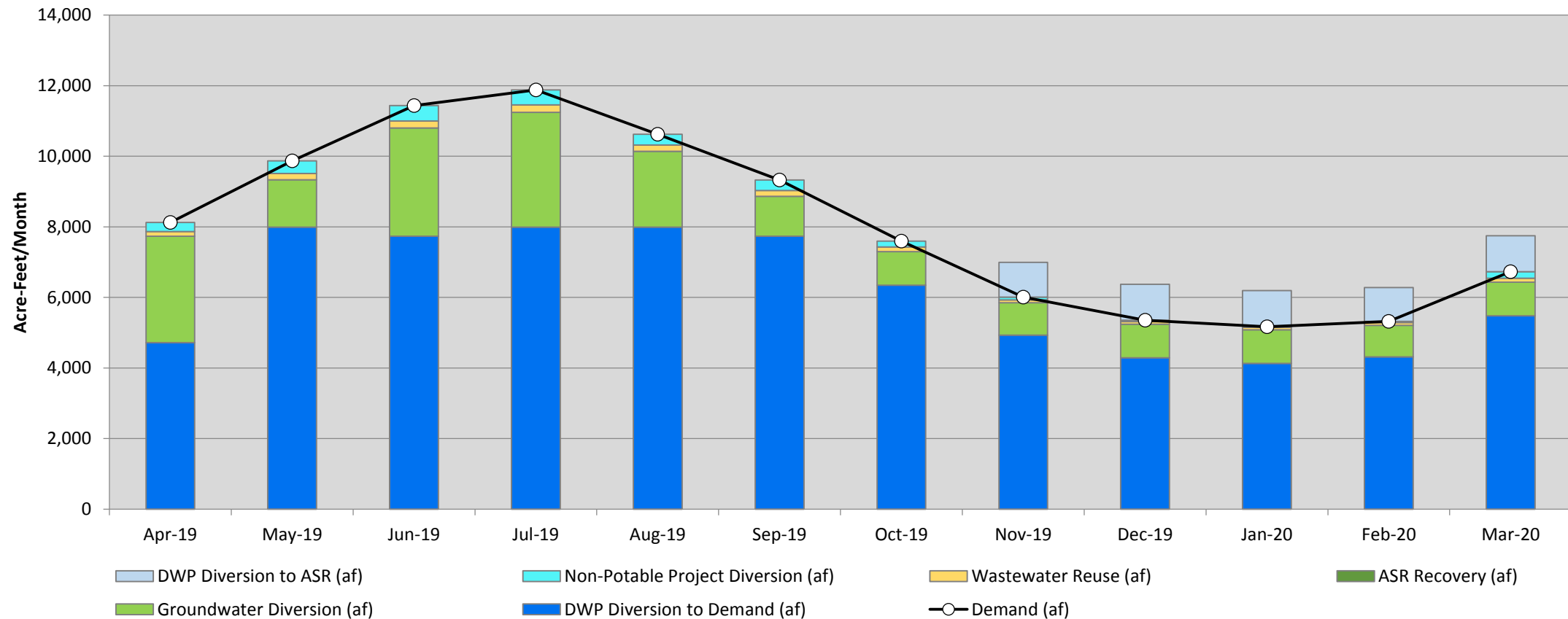


From One Extreme to Another

River Gages	Most Probable Percent Compared to Average	
	2018	2019
Rio Grande near Del Norte	50%	140%
El Vado Reservoir Inflow	18%	142%
Rio Grande at Otowi	20%	142%
Jemez below Jemez Dam	6%	138%
Rio Blanco @ Diversion	48%	137%
Navajo River @ Diversion	46%	131%

*USBR & USACE Projections as of April 2019

Projected Water Monthly Diversions for 2019 - 2020



Thank you

Any questions?